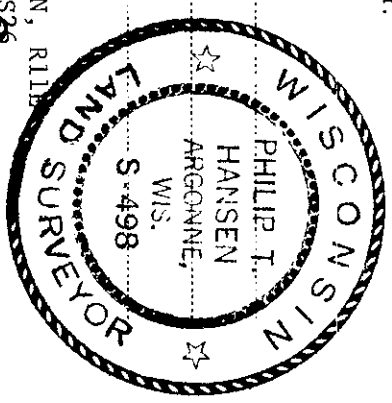


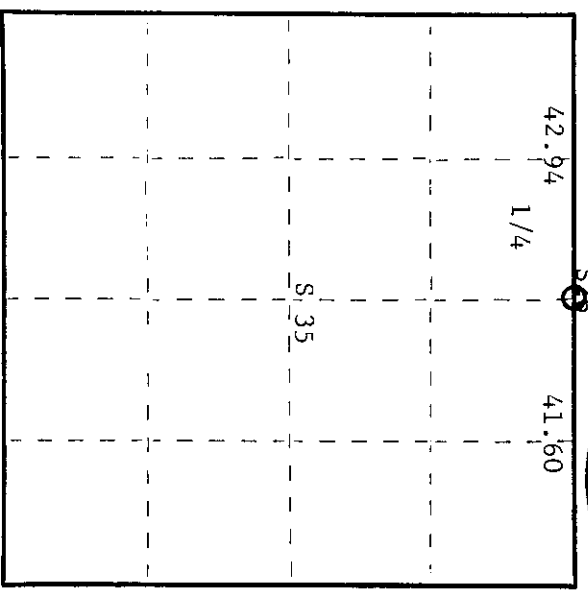
State of Wisconsin

County of Oneida } ss.

I, Philip T. Hansen, do hereby certify that on the 6th day of May, 1975, I found evidence of the Quarter corner of Sections 26 and 35 Township 37 North, Range 11 East, Fourth Principal Meridian, as described hereon; and that from this evidence I established a new monument and accessories as described hereon to perpetuate the original location of this corner.



Resident witnesses:



○ = Corner monument restored.

History of original corner establishment:

Original corner established by Wm. E. Dougherty, Government Deputy Surveyor, in 1859, from which birch 10" bears S50°E 44 links and hemlock 6" bears N30°W 4 links. Corner recovered by H.C. Lawrence, Registered Land Surveyor, in 1957. He reports that J.A. Melendy recovered the corner in 1916 from the original birch 10" and stump of original hemlock. Melendy set new post from which he established hemlock BT 14" which bore N43°E 39 links and hemlock 12" N46°W 36 links. Lawrence set new post. He found original birch stub still standing and the scribed stump of Melendy's hemlock N50°W 35 links. He marked a hemlock 8" N14°W 99 links and a yellow birch 16" S10°E 56-1/2 links.

Description of corner evidence found:

Recovered Lawrence's 5" cedar post, squared and scribed S26 1/4-S; S35 1/4-S, in good condition. Also recovered a 2-1/2" iron pipe with brass cap stamped - Recovered OBT's - Yellow birch 18" S6°E 58.0 links scribed 1/4 S35 Cedar 10" N57°W 58.3 links scribed 1/4 S26 T37N, R11E S26 1/4 S35

All bearings (mag.) and measurement taken from iron pipe.

Description of monument and accessories I established to perpetuate the original location of this corner. No new accessories established.

Dated at Rhinelander, Wis., this 15th day of May, 1975.

Signature *Philip T. Hansen* Title Registered Land Surveyor Registration No. S-498  
(County Surveyor, Registered Land Surveyor, or other duly authorized official)

Office of Register of Deeds, County of Oneida. I hereby certify that the within instrument was filed in this office for record on the 1st day of October, 1975 at 3:02 o'clock P.M.

*Tomie Lange Tucker*  
(Register of Deeds)

By: Deputy

0200901129

