

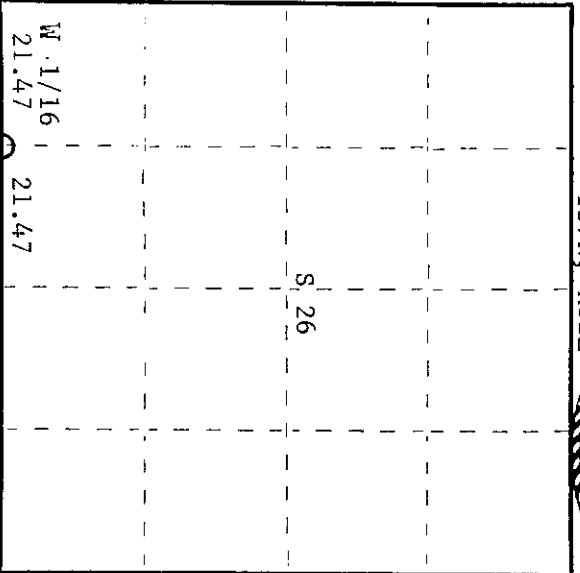
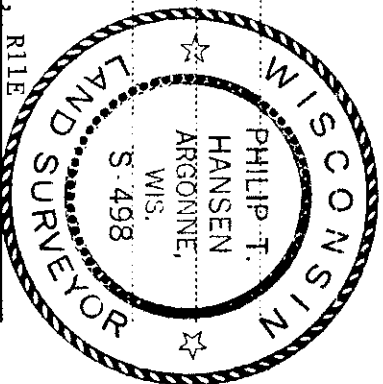
CERTIFIED LAND CORNER RESTORATION

V 18 Index No. V-18

State of Wisconsin } ss.  
 County of Oneida

I, Philip T. Hansen, do hereby certify that on the 23rd day of June, 1975, I found evidence of the W-1/16 corner of Sections 26 and 35 Township 37 North, Range 11 East, Fourth Principal Meridian, as described hereon; and that from this evidence I established a new monument and accessories as described hereon to perpetuate the original location of this corner.

Resident witnesses:



○ = Corner monument restored.

History of original corner establishment:

Original corner established by J.J. Melendy, Gagen Lumber and Cedar Company. Set post from which spruce 8" bears S67°E, 6½ links and cedar 9" bears S36°W, 20 links. Corner recovered by H.C. Lawrence, Registered Land Surveyor, in 1949 during his retracement survey. He recovered Melendy's post and his bearing tree. Set new cedar post on line 21.47 intermediate between section corner and S-1/4 corner.

Description of corner evidence found:

Recovered Lawrence's 4" cedar post, squared and scribed W-1/16 Section 26, W-1/16 Section 35, in fair condition. Also recovered an old, squared cedar lying down and moss covered.

Recovered ORT - Cedar 8" 588°E 24 links scribed W-1/16 S35, NBT  
 5' yellow birch stub S78°E 23 links scribed 1/8S, BT

Description of monument and accessories I established to perpetuate the original location of this corner.  
 Replaced Lawrence's wooden post with 1½" OD iron pipe with 2" brass cap stamped -

NBT - Cedar 6" N13°W 30.8 links scribed 1/16 BT S498  
 T37N, R11E

W-1/16 S126  
 CPT-1975

Dated at Rhineland, Wis., this 16th day of July, 1975.

Signature: *Philip T. Hansen* Title: Registered Land Surveyor Registration No. S-498  
 (County Surveyor, Registered Land Surveyor, or other duly authorized official)

Office of Register of Deeds, County of Oneida  
 Instrument was filed in this office for record on the 1st day of October, 1975 at 3:00 o'clock P.M.

*Donna Lange Tuel*  
 (Register of Deeds)

By: Deputy

0200091123