

CERTIFIED LAND CORNER RESTORATION

Index No.

U-14

State of Wisconsin } ss.
County of Oneida }

I Philip T. Hansen, do hereby certify that on the 5th day of November, 1975, I found evidence of the SW-1/16 corner of Section 27

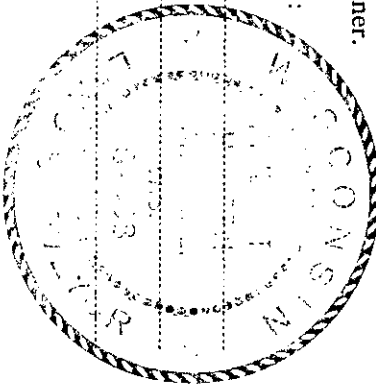
Township 37 North, Range 11 East, Fourth Principal Meridian,

as described hereon; and that from this evidence I established a new monument and accessories as described hereon to perpetuate the original location of this corner.

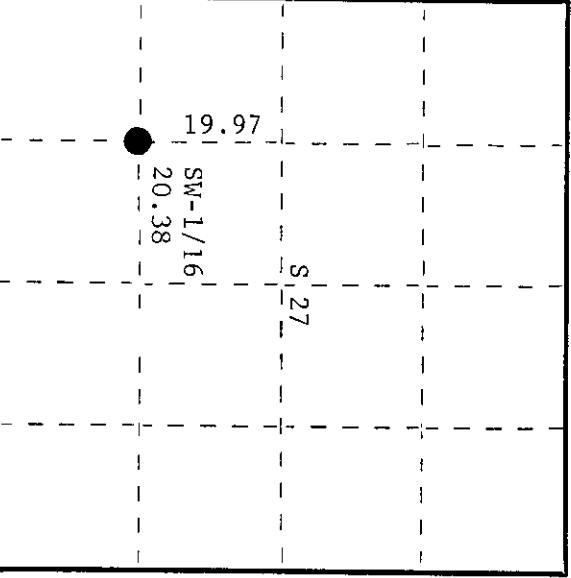
Resident witnesses:

Glen Barker

Jim Claflin



T37N, R11E



History of original corner establishment:

Corner established by H.C. Lawrence, Registered Land Surveyor, in 1949. Ran random line west from established SC-1/16 to S-1/16 between Sections 27 and 28 and random line south from established WC-1/16 to W-1/16 between Sections 27 and 34. Corrected lines to establish SW-1/16. Set 6" cedar post and marked BT's - Black ash 20", N10°W, 64 lks. and cedar 10", S39°E, 74 lks.

Description of corner evidence found:

Recovered 6" cedar post, squared and scribed SW-1/16 S27, SW-1/16 S27 in poor condition.
Recovered OBT's - Black ash 20" (22") N10°W 64 lks. Scribed SW-1/16 S27 BT.
Cedar 10" (11") S39°E 74 lks. Scribed SW-1/16 BT.

Description of monument and accessories I established to perpetuate the original location of this corner.

Replaced 6" cedar post with 1-1/2" O.D. iron pipe with 2" brass cap stamped - S498
Pipe projects 18" above ground. Placed old post beside pipe.
NBT's - Black ash 8" N70°W 52.2 lks. Scribed 1/16 BT. T37N, R11E
Pipe and BT's painted blue.

SW-1/16 S | 27

CPI-1975

Dated at Rhinelander, Wis., this 11th day of November, 1975.

Signature: *Philip T. Hansen* Title: Registered Land Surveyor Registration No. S-498
(County Surveyor, Registered Land Surveyor, or other duly authorized official)

Office of Register of Deeds, County of Oneida
Instrument was filed in this office for record on the 11th day of November, 1975.
at 10:00 o'clock P.M. I hereby certify that the within

Barbara Verage Brecht
(Register of Deeds)

By: Deputy

3711271030