

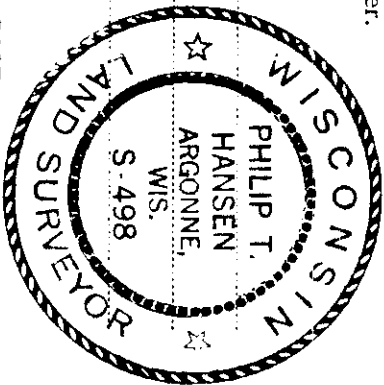
CERTIFIED LAND CORNER RESTORATION

Index No. 7-11

State of Wisconsin }  
County of Oneida } ss.

I, Phillip T. Hansen, do hereby certify that on the 23rd day established June, 1980, I ~~found~~ corrected the C 1/4 corner of Section 28 Township 37, North, Range 11 East, Fourth Principal Meridian, as described hereon; and that from this evidence I established a new monument and accessories as described hereon to perpetuate the original location of this corner.

Resident witnesses:  
Glen Barker  
Jim Clafin  
Herb Wagoner



History of original corner establishment:  
No record of any previous survey.

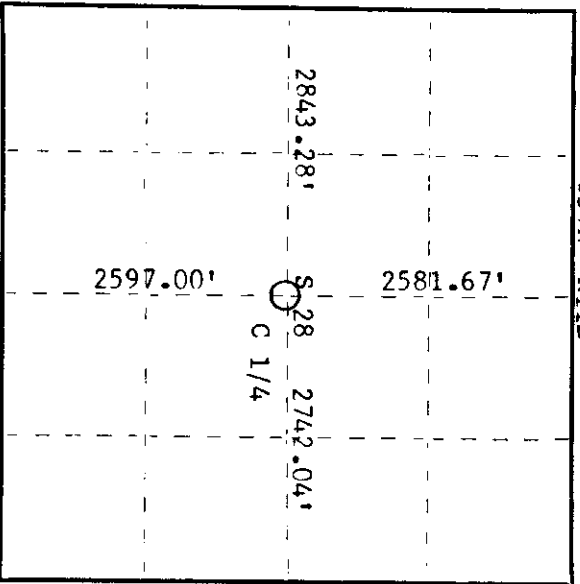
Description of corner evidence found:

No evidence of any corner recovered.  
Corner established by traverse and computation at S 3° 58' 33" W 2581.67 feet of N 1/4 corner, N89° 00' 59" W 2742.04 feet of E 1/4 corner, N 3° 58' 33" E 2597.00 feet of S 1/4 corner, S 89° 00' 59" E 2843.28 feet of W 1/4 corner.

Description of monument and accessories I established to perpetuate the original location of this corner.

Set a 2-1/2" Berntsen A-1 Federal Monument projecting 18" above ground - alloy cap stamped:

Marked NBT's -  
Cedar 10" N42°E 8.50 feet  
Cedar 6" S59°W 4.00 feet  
Cedar 6" S36°E 29.17 feet  
scribed C 1/4 B.T.  
T37N R11E  
C 1/4 S+28  
S498 - 1980



○ = Corner monument restored.

Dated at Rhinelander, Wis., this 22nd day of July, 1980.

Signature Phillip T. Hansen, Title Registered Land Surveyor, Registration No. S-498  
(County Surveyor, Registered Land Surveyor, or other duly authorized official)

Office of Register of Deeds, County of Oneida, I hereby certify that the within instrument was filed in this office for record on the 30th day of July, 1980 at 10:15 o'clock A. M.

Lorin Leage Fisher  
(Register of Deeds)

By Lorin Leage Fisher Deputy

3711282020