

CERTIFIED LAND CORNER RESTORATION

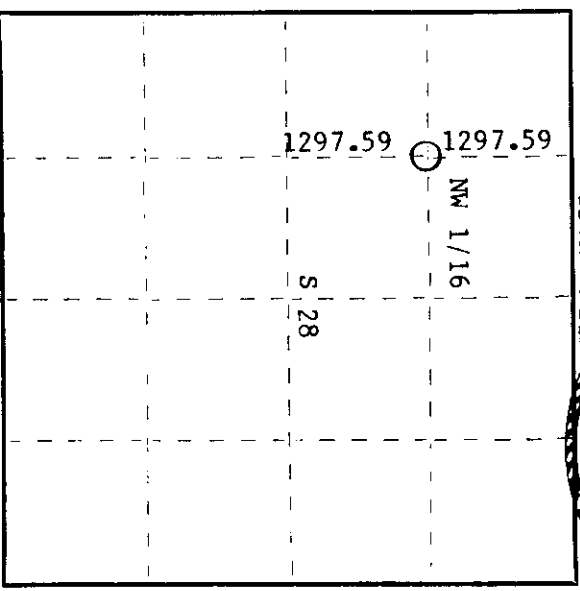
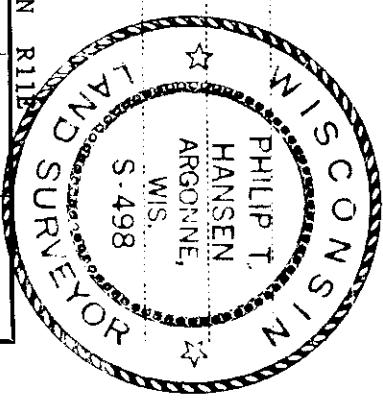
Index No. S-10

State of Wisconsin

County of Oneida } ss.

I, Phillip T. Hansen, do hereby certify that on the 24th day of June, 1980, I ~~restored~~ established the NW 1/16 corner of Section 28 Township 37, North, Range 11 East, Fourth Principal Meridian, as described hereon; and that from this evidence I established a new monument and accessories as described hereon to perpetuate the original location of this corner.

Resident witnesses:  
Glen Barker  
Jim Clafflin  
Herb Wagoner



○ = Corner monument restored.

History of original corner establishment:

Temporary corner set in 1951 by H.C. Lawrence, Registered Land Surveyor. He did not subdivide the NW 1/4. In survey notes he states temporary corner only.

Description of corner evidence found:  
 H.C. Lawrence's 4" squared cedar post and State Highway Dept. brass cap along side post. No BT's of record.

Corner established by traverse and computation. Subdivided section to establish C 1/4 corner. Subdivided NW 1/4 to establish NW 1/16 corner. Computed location of NW 1/16 corner is S 4° 54' 49" W 1297.59 feet, of W 1/16 corner between sections 21 and 28 and N 4° 54' 49" E 1297.59 feet of W.C. 1/16 corner. Post and B.C. bear N88°W 40.42 feet of new corner.

Description of monument and accessories I established to perpetuate the original location of this corner.  
 Set a 1-1/2" iron pipe with 2" brass cap, stamped:  
 Monument projects 12" above ground.

Marked NBT's -  
 Cedar 8" S74°W 61.10 feet  
 Tamarack 7" N76°W 47.00 feet  
 NW 1/16 S 28  
 CPI-1980

Dated at Rhineland, Wis., this 22nd day of July, 1980

Signature Phillip T. Hansen Title Registered Land Surveyor Registration No. S-498  
 County Surveyor, Registered Land Surveyor, or other duly authorized official

Office of Register of Deeds, County of Oneida I hereby certify that the within instrument was filed in this office for record on the 30th day of July, 1980 at 10:15 o'clock A. M.

Doris Savage Kuehn  
 (Register of Deeds)

By: \_\_\_\_\_ Deputy