

CERTIFIED LAND CORNER RESTORATION

Index No. V-3

State of Wisconsin }
County of Oneida } ss.

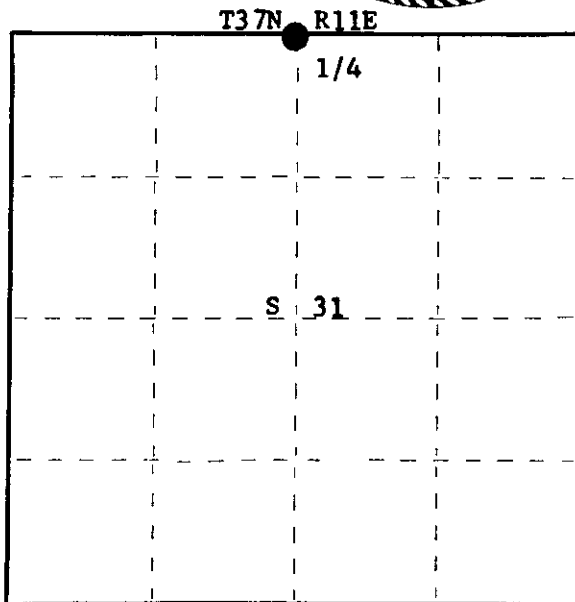
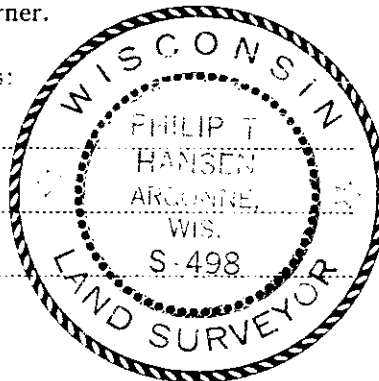
I Philip T. Hansen, do hereby certify that on the 3rd day of March, 1978, I found evidence of the Quarter corner of Sections 30 & 31 Township 37, North, Range 11 East, Fourth Principal Meridian, as described hereon; and that from this evidence I established a new monument and accessories as described hereon to perpetuate the original location of this corner.

Resident witnesses:

Glen Barker

Jim Claflin

Herb Wagoner



○ = Corner monument restored.

History of original corner establishment:

Corner established by Wm. E. Dougherty, Government Deputy Surveyor, in 1859, from which tamarack 8" bears S 23° W, 6 links; cedar 12" N 44° W, 11 links.

Corner re-established by V. Maine, County Surveyor, in 1935. Set 2½" iron pipe with brass cap stamped.

Description of corner evidence found:

Recovered Maine's 2½" iron pipe with brass cap, stamped: Projects 24" above ground.

Recovered his pine stump 30" which bears N 8° W, 88.7 links, scribed 1/4S Maine B.T. (No record of BT)

T37 S30 R11
1/4
S31
M

Description of monument and accessories I established to perpetuate the original location of this corner.

Iron pipe is in perfect condition, painted blue. Left as we found it.

NBT's - Maple 8" N 16° W, 54.9 links
Sugar 8" N 52° W, 62.3 links
Maple 8" N 88° W, 40.9 links
White Birch 7" S 30° W, 75.9 links
all scribed 1/4 BT

Dated at Rhineland Wis., this 30th day of March, 1978.

Signature Philip T. Hansen Title Registered Land Surveyor Registration No. S-498
(County Surveyor, Registered Land Surveyor, or other duly authorized official)

Office of Register of Deeds, County of Oneida, I hereby certify that the within instrument was filed in this office for record on the 10th day of April, 1978 at 10:30 o'clock A M.

Doree Verage Kuehn
(Register of Deeds)

By..... Deputy

FORM 985 H. C. MILLER CO. MILWAUKEE

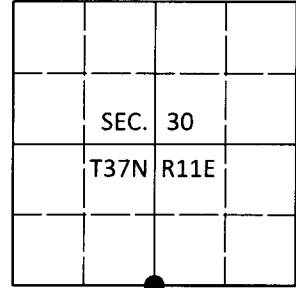
3711300020

U.S. PUBLIC LAND SURVEY MONUMENT RECORD

Note: This form is intended and designed to fulfill all requirements of Wisconsin Administrative Code, Chapter A-E 7.08 U.S. Public Land Survey Monument Record (3)(a-i).

(a) CORNER LOCATION
 1/4 Cor. of Secs. 30 & 31
 Township 37 North
 Range 11 East of the 4th P.M.
 Town of Piehl
 County of Oneida

WISCRS - Oneida County
 N: 170,264.27 USft
 E: 327,008.34 USft
 Datum: NAD 83(2011)
 GNSS Method: RTN - Direct
 GNSS Control: WISCORS VRS



(b) HISTORY OF ORIGINAL CORNER ESTABLISHMENT

Original Surveyor: _____ Original Accessories: _____
 Date of Survey Commenced: _____ See previous USPLS Monument Record
 Completed: _____

(b)(f)(g)(h) Description of monument found at this corner and if it was accepted, state all evidence (material, testimonial, occupational, plats, records, other monuments) used as a basis for accepting. If not accepted or if nothing was found, state evidence used as basis for establishing location. If re-established through lost corner proportionate methods, indicate all monuments, distances and directions used to establish. Indicate type of monument and sign post found or set.

This is a perpetuation of a previous USPLS Monument Record by Philip T. Hansen, RLS dated Mar. 30, 1978 and filed in the office of the Oneida County Register of Deeds. A complete history of the corner can be found on the previous monument record. I accept the previous location as a true and faithful perpetuation or reestablishment of the original corner location and further perpetuate it as follows.

Sep. 13, 2018: I found and accepted the record monument, a 2-1/2" diam. iron pipe with a 2-1/2" diam. brass cap projecting 32" above the ground surface. The record bearing tree at N16°W is standing dead, the tree at S30°W is down. I found or established accessories as shown below. I set a white vinyl sign post bearing Northeast, 0.8 ft.

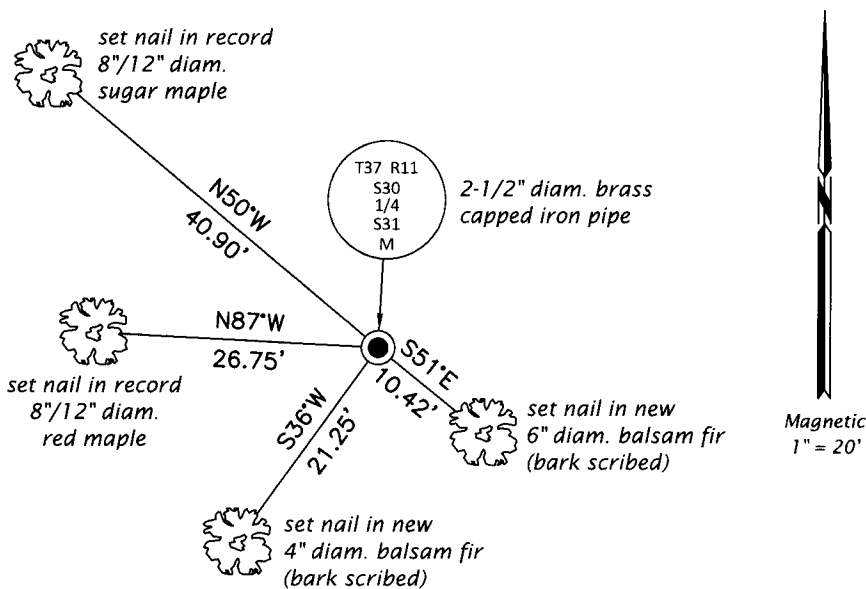
The coordinate value shown has been verified by at least one of the following methods: 1) comparison to a previously GPS determined published value; 2) the value is the average of two or more GPS observations at a markedly different time; 3) one or more distances were measured back to the GPS observed corner from temporary GPS observed offset locations.

REGISTER OF DEEDS OFFICE
 ONEIDA COUNTY
 FILED

DEC 31 2018

KYLE J. FRANSON
 REGISTER OF DEEDS

(c)(d)(e) Plan view of corner with ties to at least 4 witness monuments. If in disagreement with previously established corner, show the distances between the two corners and also indicate the ties to the disputed.



(i) I, Jeffrey W. Austin, Professional Land Surveyor No. S-1885, hereby certify that the corner location on this record was determined by me or under my direction and control and that this U.S. Public Land Survey Monument Record is correct and complete to the best of my knowledge and belief.



 Signature

13 DEC 2018

Date