

CERTIFIED LAND CORNER RESTORATION

Index No. T-5

State of Wisconsin }
County of Oneida } ss.

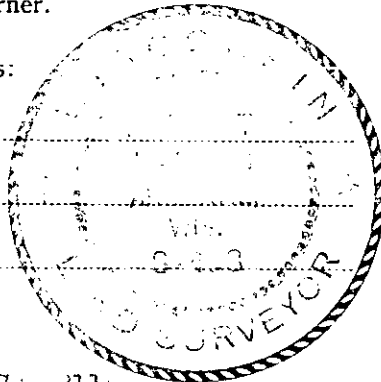
I Philip T. Hansen, do hereby certify that on the 1st day of September, 1976, I ~~found~~ re-established the quarter corner of section 29 and 30 Township 37, North, Range 11 East, Fourth Principal Meridian, as described hereon; and that from this evidence I established a new monument and accessories as described hereon to perpetuate the original location of this corner.

Resident witnesses:

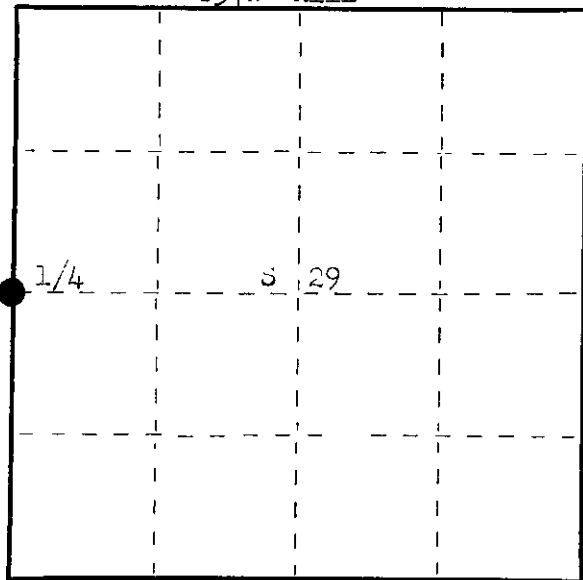
Glen Barker

Jim Clarlin

Herb Wagoner



T37N R11E



○ = Corner monument restored.

History of original corner establishment: Original Corner established by Wm. B. Dougherty, Deputy Surveyor, in 1859, from which Hamlock 8" bears N 32° E 12 links and Hamlock 24" bears S 36° W 23 links. This corner recovered by D.H. Vaughan, County Surveyor, in 1906. He ran the 1/4 line from this corner at that time.

Corner recovered by V.M. Laine, County Surveyor. He accepted the intersection of the centerline of State Highway 26 and County Trunk C as the corner on testimony from Abert Hoffslund, who preserved the corner (original stake) when he built County Trunk C. Set a triangular stone on a flat stone, covering remains of old post. Laine marked Gray Boulder, 48" x 50" with λ, S 37° W 64 links and Gray Boulder 48" x 50" N 41° W 48 links.

H.C. Lawrence, registered Land Surveyor, recovered Laine's Gray boulders for B.O's in 1951. Description of corner evidence found:

No evidence of Corner or reference boulders, destroyed during recent construction.

This corner re-established from line run from 1/4 corner, S 89° 25' 05" W 60.258 chains. H.C. Lawrence's recorded distance measured in 1951. Point falls in the intersection of old Highway 26 and old Highway C.

Description of monument and accessories I established to perpetuate the original location of this corner.

Drove a 1 1/2" x 18" iron pipe 6" below surface for the corner. Total distance from 1/4 corner is 41.86 chains.

Set a 2 1/2" iron pipe with brass cap for witness corner 110 links S 55° W, stamped: monument projects 2' above ground.

NET & BC - tower pole S 75° W 89 links.

Top of 24" culvert (west end) S 56° W 61 links.

Maple 8" S 38° W 141 links, scribed 1/4 BT.

Measurements made to true corner.

M.C. & BT's painted blue.

5498
T37N R11E
1/4 30 | 29 ...C.
N 55° W 110 lks.
JPI - 1976

Dated at Rainelander, Wis., this 7th day of September, 1976.

Signature Philip T. Hansen Title registered Land Surveyor Registration No. 2-498
(County Surveyor, Registered Land Surveyor, or other duly authorized official)

Office of Register of Deeds, County of Oneida, I hereby certify that the within instrument was filed in this office for record on the 29th day of September, 1976 at 2:30 o'clock P. M.

Doris Verage Kuehn
(Register of Deeds)

By _____ Deputy

FORM 985 H. C. MILLER CO., MILWAUKEE

3711302000

This form is intended to fulfill the requirements of Chapter A-E 7.08 (3)(a) thru (i) U.S. Public Land Survey Monument Location Record, Wisconsin Administrative Code. Use the reverse side of form for continuation.

U.S. PUBLIC LAND SURVEY MONUMENT LOCATION RECORD

Recorders Data

USPLS CORNER: WEST 1/4 CORNER SECTION: 29 TOWNSHIP: 37 NORTH RANGE: 11 EAST

NAME OF WATERWAY FOR M.C. CORNER : N/A SECTION LINE: N/A

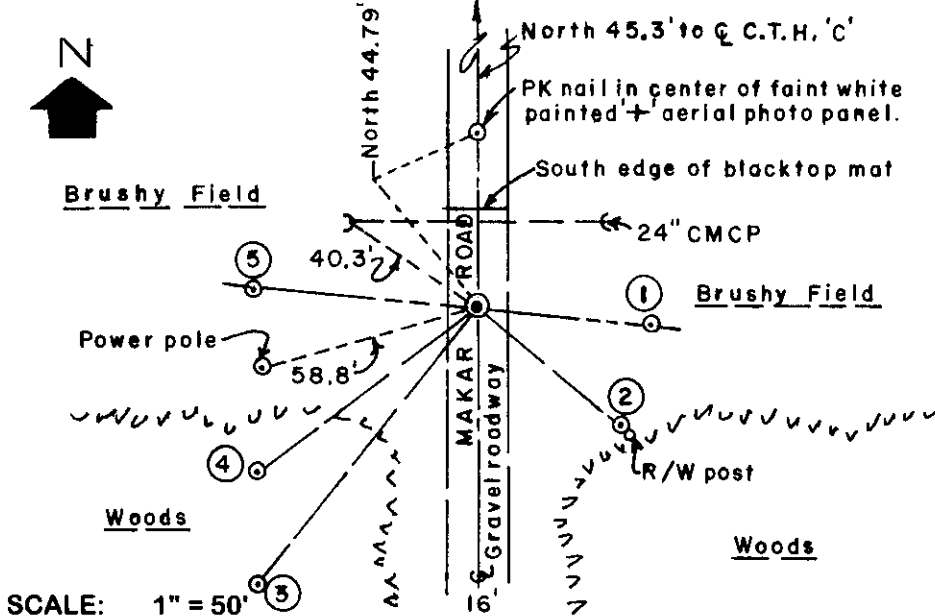
(CITY)(VILLAGE)(TOWN) OF: PIEHL COUNTY OF: ONEIDA

Description of monument found or placed and all other evidence used as the basis for monument location; including monuments and related measurements required if the corner location was reestablished by lost corner proportionate methods. Also indicate name of original surveyor, original survey date and the corner monument, bearing trees, witness or other reference monuments established; including measured bearing and distance ties, from available records.

THIS CORNER HAS BEEN RE-REFERENCED AT THE REQUEST OF ONEIDA COUNTY SURVEYOR MICHAEL ROMPORTL. Found and accepted an old 1" dia. iron pipe tipped 10°+- SE about 6" below roadway; I carefully dug out the iron pipe to reveal original soil cavity and reset the 18" iron pipe into the cavity with top about 9" below grade; previous recovery notes from Certified Land Corner Restoration record filed by Philip Hansen, RLS 498, September 29, 1976, as follows:

In August 1859, William E. Daugherty/GLO set a wood post as the original corner and marked OBTs: An 8" Hemlock N32°E 12 links and a 24" Hemlock S36°W 23 links, all of which are now obliterated within roadway area. In 1906, D.H. Vaughn recovered the corner for survey of E/W quarter line. V.M. Maine then subsequently restored the corner at the centerline intersection of CTH 'C' and old Highway 26 upon the testimony of Bert Hoffslund, who preserved the corner with a triangular stone on a flat stone covering remains of the old wood corner post. Maine marked a 48" by 60" Gray Boulder with an 'X' S37°W 64 links and a 48" by 60" Gray Boulder N41°W 48 links; Harold C. Lawrence recovered the boulders in 1951. In 1976, Philip Hanson, RLS 498 of Consolidated Papers, Inc. found no corner evidence as previously destroyed by construction, so he reestablished the corner at record distance measured by H.C. Lawrence in 1951 of 80.258 chains at S89°25'05"W from East 1/4 corner of Section 29, which also fell in the intersection of old CTH 'C' and old Highway 26 at 41.86 chains from C1/4 corner and set a 1" dia. by 18" long iron pipe 6" below surface and noted a 2.5" iron pipe witness monument with stamped brass cap set S55°W 110 links; a power pole S75°W 89 links; west end of 24" culvert N56°W 61 links; and an 8" Maple BT S38°W 141 links, all of which I found OK and noted for the new ties below, excepting culvert end NW and power pole. I set a standard white poly 'T' marker post 6" East of East witness monument and 14" West of West witness monument. Recovery completed June 14, 1999; there were no witnesses.

Plan view map of monument location with bearing and distance ties to a minimum of four(4) described witness or reference monuments of concrete, natural stone, iron, live bearing trees or equivalent material. If applicable, also show a minimum of two(2) bearing and distance ties to any other monument found and not accepted; including the bearing and distance from the accepted monument.

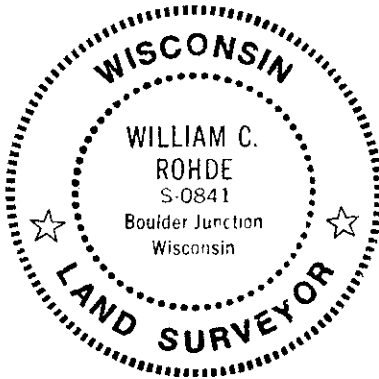


WITNESS MONUMENT TIES:

- ① 3/4" dia. by 30" long rebar set with top 2" above grade S85°E 45.23'.
- ② 5/8" dia. by 24" long rebar set with Reference Mark cap S50°E 48.20' and 7" NW of old yellow wood R/W post.
- ③ Old BT 12" Mr S39°W 93.20 with open face blazes; nailed BT sign on upper NE face.
- ④ 2" dia. iron pipe found with 1976 stamped brass cap 34" above grade S54°W 72.48'.
- ⑤ 3/4" dia. by 30" long rebar set with uncapped top 2" above grade N85°W 58.82'.

SCALE: 1" = 50'
 Unless otherwise indicated, all bearing tree ties are to a .25" dia. by 2.5" long PK nail with a 1.25" dia. steel washer stamped BT is also driven into unblazed face of bearing tree at DBH; the basis for measured bearings is by compass to nearest degree and all tie distances are measured horizontal by steel tape corrected to nearest 1/100th feet at standard temperature of 68° F.

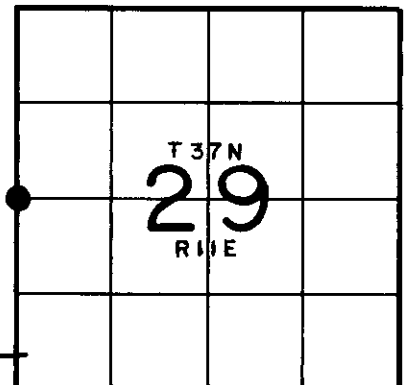
RLS SEAL:



LAND SURVEYOR CERTIFICATE:

I, William C. Rohde, hereby certify that I am duly licensed as a Professional Land Surveyor in the State of Wisconsin; that this USPLS monument location was determined by me and/or under my direct supervision and control; and that this U.S. Public Land Survey Monument Location Record is true and correct to the best of my knowledge and belief.

Signed: *William C. Rohde*
 William C. Rohde RLS 841



SECTION LOCATION MAP

INDEX NO. T 5

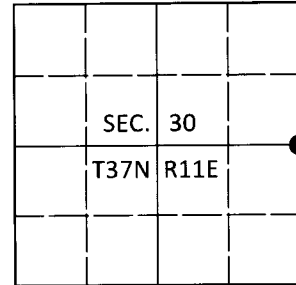
3711302000

U.S. PUBLIC LAND SURVEY MONUMENT RECORD

Note: This form is intended and designed to fulfill all requirements of Wisconsin Administrative Code, Chapter A-E 7.08 U.S. Public Land Survey Monument Record (3)(a-i).

(a) CORNER LOCATION
 1/4 Cor. of Secs. 29 & 30
 Township 37 North
 Range 11 East of the 4th P.M.
 Town of Piehl
 County of Oneida

WISCRS - Oneida County
 N: 172,633.34 USft
 E: 329,871.25 USft
 Datum: NAD 83(2011)
 GNSS Method: RTN - Direct
 GNSS Control: WISCORS VRS



(b) HISTORY OF ORIGINAL CORNER ESTABLISHMENT

Original Surveyor: _____ Original Accessories: _____
 Date of Survey Commenced: _____ See previous monument record(s)
 Completed: _____

(b)(f)(g)(h) Description of monument found at this corner and if it was accepted, state all evidence (material, testimonial, occupational, plats, records, other monuments) used as a basis for accepting. If not accepted or if nothing was found, state evidence used as basis for establishing location. If re-established through lost corner proportionate methods, indicate all monuments, distances and directions used to establish. Indicate type of monument and sign post found or set.

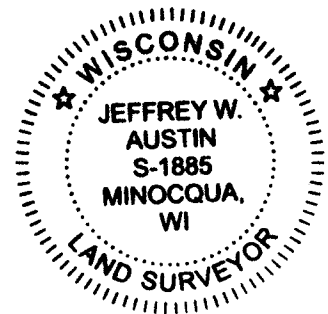
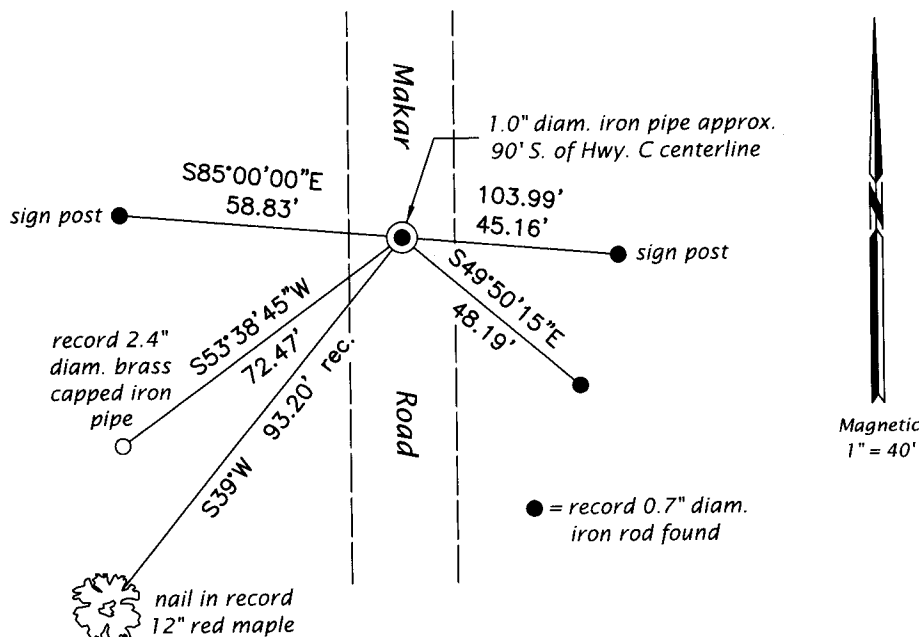
This is a perpetuation of the following monument record(s) that comprise a complete history of the corner:

June 15, 1999: USPLS Monument Record No. 3711302000 by William C. Rohde, PLS

Aug. 2, 2019: I found and accepted a perpetuation of the record monument, a nail in the centerline of the gravel roadway. In place of the nail, I set a 1.0" diam., 24" long iron pipe 6" beneath the road surface. I found or established accessories as shown below.

The coordinate value shown has been verified by at least one of the following methods: 1) comparison to a previously GPS determined published value; 2) the value is the average of two or more GPS observations at a markedly different time; 3) one or more distances were measured back to the GPS observed corner from temporary GPS observed offset locations.

(c)(d)(e) Plan view of corner with ties to at least 4 witness monuments. If in disagreement with previously established corner, show the distances between the two corners and also indicate the ties to the disputed.



REGISTER OF DEEDS OFFICE
 ONEIDA COUNTY
 FILED

JAN 03 2020

KYLE J. FRANSON
 REGISTER OF DEEDS

(i) I, Jeffrey W. Austin, Professional Land Surveyor No. S-1885, hereby certify that the corner location on this record was determined by me or under my direction and control and that this U.S. Public Land Survey Monument Record is correct and complete to the best of my knowledge and belief.

[Handwritten Signature]
 Signature

DEC 23, 2019
 Date

3711302000 (INDEX NO. T-5)