

CERTIFIED LAND CORNER RESTORATION

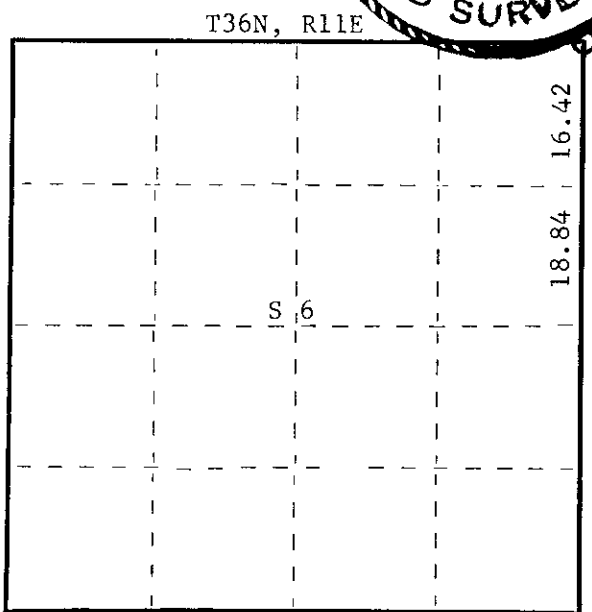
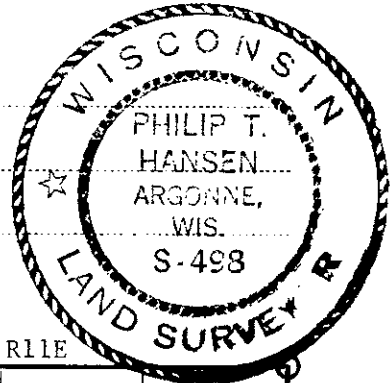
Z 5

Index No. Z-5

State of Wisconsin }  
County of Oneida } ss.

I Philip T. Hansen, do hereby certify that on the 6th day of May, 1975, I found evidence of the Section Corner corner of 5 - 6 - 31 - 32 Township 36 - 37, North, Range 11 East, Fourth Principal Meridian, as described hereon; and that from this evidence I established a new monument and accessories as described hereon to perpetuate the original location of this corner.

Resident witnesses:



○ = Corner monument restored.

History of original corner establishment:

Original corner established by Alfred Millard, Gov. Deputy Surveyor, in 1858, from which white birch 10" bears N55°W, 14 links; maple 6" bears N27°E, 19 links; spruce 10" bears S73°E, 6 links; white pine 12" bears S25°W, 16".

H.C. Lawrence, Registered Land Surveyor, recovered an iron pipe in center line of old highway No. 26, from which old white pine stump bears S68°W, 46 links. He established NBT white birch 8" S72°W, 33 links and a white location poster 6" bears S88°E, 35 links.

Description of corner evidence found:

Searched for iron pipe buried in the center line of old highway No. 26 with dip needle, but was unable to locate it. Recovered white location poster and pine stump and stump of white birch 8". From these three references, was able to relocate corner, which coincided with center line of old highway.

Description of monument and accessories I established to perpetuate the original location of this corner.

Set 1-1/2" O.D. x 2' iron pipe, buried in the road 6" below the surface, from which a 2-1/2" x 5' iron pipe with brass cap stamped - was set 40 links east on the edge of road.

NBT - White birch 6" N68°E 68.3 links scribed SC BT  
White birch 8" N52°E 89.2 links scribed SC BT

BT's are measured to the section corner.

S498  
T37N  
S31 | S32 W.C.  
S6 | S5  
T36N  
W-40 links

Dated at Rhinelander, Wis., this 22nd day of May, 1975.

Signature *Philip T. Hansen* Title Registered Land Surveyor Registration No. S-498  
(County Surveyor, Registered Land Surveyor, or other duly authorized official)

Office of Register of Deeds, County of Oneida, I hereby certify that the within instrument was filed in this office for record on the 1st day of October, 1975 at 3:00 o'clock P.M.

*Doris Verae Kuehn*  
(Register of Deeds)

By Deputy

FORM 985 R. C. MILLER CO., MILWAUKEE

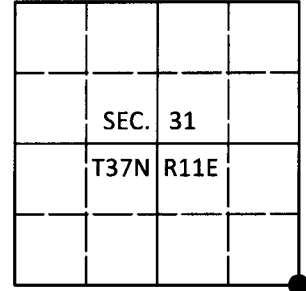
3711310000

# U.S. PUBLIC LAND SURVEY MONUMENT RECORD

Note: This form is intended and designed to fulfill all requirements of Wisconsin Administrative Code, Chapter A-E 7.08 U.S. Public Land Survey Monument Record (3)(a-i).

(a) CORNER LOCATION  
 Cor. of Secs. 5, 6, 31 & 32  
 Township 36 & 37 North  
 Range 11 East of the 4th P.M.  
 Town of Monico & Piehl  
 County of Oneida

WISCORS - Oneida County  
 N: 165,329.49 USft  
 E: 329,253.39 USft  
 Datum: NAD 83(2011)  
 GNSS Method: RTN - Direct  
 GNSS Control: WISCORS VRS



(b) HISTORY OF ORIGINAL CORNER ESTABLISHMENT

Original Surveyor:

Original Accessories:

Date of Survey Commenced:  
 Completed:

See previous USPLS Monument Record

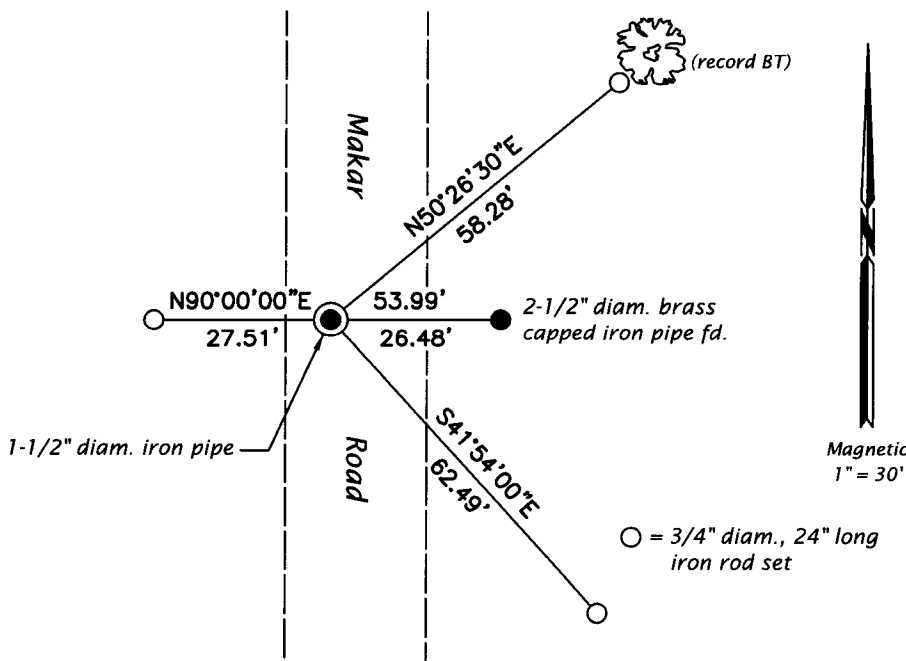
(b)(f)(g)(h) Description of monument found at this corner and if it was accepted, state all evidence (material, testimonial, occupational, plats, records, other monuments) used as a basis for accepting. If not accepted or if nothing was found, state evidence used as basis for establishing location. If re-established through lost corner proportionate methods, indicate all monuments, distances and directions used to establish. Indicate type of monument and sign post found or set.

*This is a perpetuation of a previous USPLS Monument Record by Philip T. Hansen, RLS dated May 22, 1975 and filed in the office of the Oneida County Register of Deeds. A complete history of the corner can be found on the previous monument record. I accept the previous location as a true and faithful perpetuation or reestablishment of the original corner location and further perpetuate it as follows.*

*May 28, 2018: I found and accepted the record monument, a 1-1/2" diam. iron pipe buried 6" and 4 ft. West of the centerline of Makar Road. I found or established accessories as shown below. I set a white vinyl sign post adjacent to the westerly reference monument.*

*The coordinate value shown has been verified by at least one of the following methods: 1) comparison to a previously GPS determined published value; 2) the value is the average of two or more GPS observations at a markedly different time; 3) one or more distances were measured back to the GPS observed corner from temporary GPS observed offset locations.*

(c)(d)(e) Plan view of corner with ties to at least 4 witness monuments. If in disagreement with previously established corner, show the distances between the two corners and also indicate the ties to the disputed.



REGISTER OF DEEDS OFFICE  
 ONEIDA COUNTY  
 FILED

JUN 13 2018

KYLE J. FRANSON  
 REGISTER OF DEEDS

(i) I, Jeffrey W. Austin, Professional Land Surveyor No. S-1885, hereby certify that the corner location on this record was determined by me or under my direction and control and that this U.S. Public Land Survey Monument Record is correct and complete to the best of my knowledge and belief.

*[Handwritten Signature]*  
 Signature

JUNE 4, 2018  
 Date