

U.S. PUBLIC LAND SURVEY MONUMENT RECORD

REGISTER OF DEEDS OFFICE
ONEIDA COUNTY
MINOCQUA, WISCONSIN

Note: This form is intended and designed to fulfill all requirements of the Wisconsin Administrative Code, Chapter A-E 7.08 U.S. Public Land Monument Record (3)(a)(b)(c)(d)(e)(f)(g)(h)(i). An additional sheet may be added if necessary to conform with said requirements.

MAY 25 2017

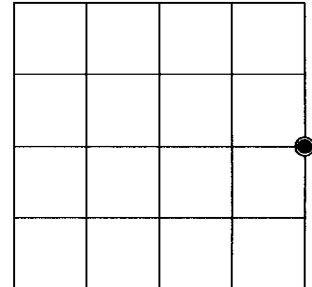
(a) CORNER LOCATION:
East Quarter Corner of Section 31
Township 37 North
Range 11 East
Town of Piehl
County of Oneida

WISCRS - Oneida County
North: 167227.020 USft
East: 329864.153 USft
Latitude: 45° 38' 38.48630" N
Longitude: 89° 09' 14.48382" W
Datum: NAD 83(2011)
GNSS Method: RTK - Direct
GNSS Control: WISCORS VRS
Record North: 167227.001 USft
Record East: 329864.194 USft
Record Datum: NAD 83(1991)

AT O'CLOCK
BY KYLE J. FRANSON
REGISTER OF DEEDS

(RECORDING AREA)

SECTION 31



(b) HISTORY OF ORIGINAL CORNER ESTABLISHMENT

Original Surveyor: William E. Dougherty
Date of Survey: Commenced August 10, 1859
Completed August 14, 1859
Original B.T.'S: Ironwood 10" N 71°W, 33 lks.
Hemlock 10" S 49°E 29 lks.

(f)(g)(h) DESCRIPTION OF MONUMENT FOUND AT THIS CORNER AND IF IT WAS ACCEPTED, STATE ALL EVIDENCE (MATERIAL, TESTIMONIAL, OCCUPATIONAL, PLATS, RECORD, OTHER MONUMENTS) USED AS A BASIS FOR ESTABLISHING LOCATION. IF NOT ACCEPTED OR IF NOTHING WAS FOUND, STATE EVIDENCE USED AS BASIS FOR ESTABLISHING LOCATION. IF REESTABLISHED THROUGH LOST CORNER PROPORTIONATE METHODS, INDICATE ALL MONUMENTS, DISTANCES AND DIRECTIONS USED TO ESTABLISH. INDICATE TYPE OF MONUMENT AND SIGN POST FOUND OR SET.

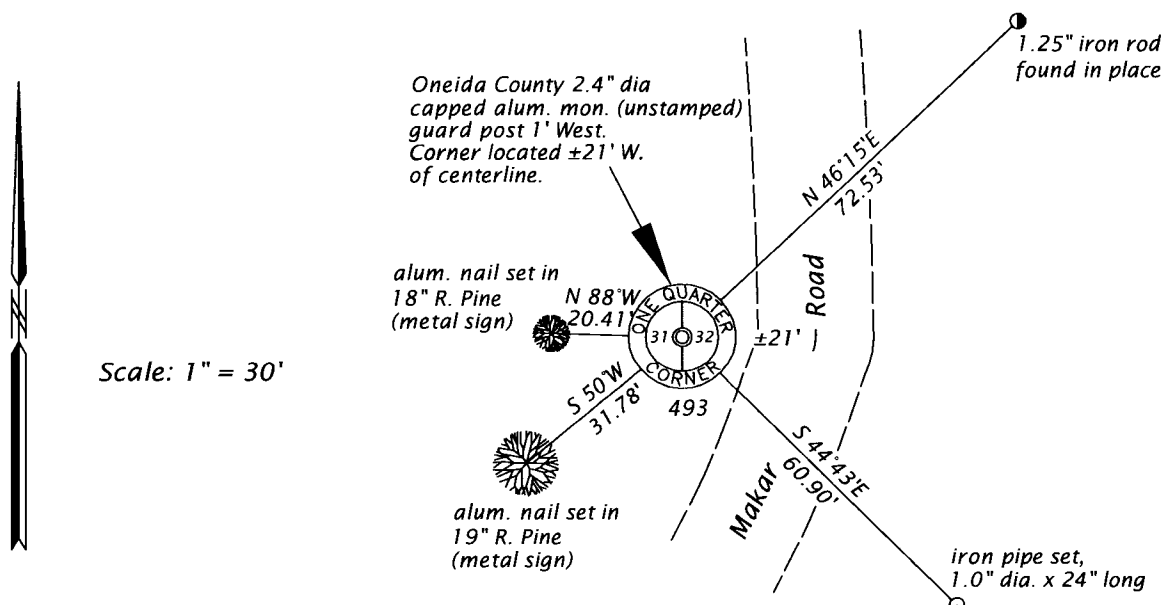
November 16, 1885 - B. F. Dorr, County Surveyor, Door-Vaughan Book, page 159 and Old Field Book 25, pages 31 & 32, retraced the east line of Section 31 and noted the section line deflected at a bearing of S 17 1/4° W, for a distance of 30.20 chains from the the east 1/4 corner to the southeast section corner.

November 22, 1937 - V. N. Maine, County Surveyor, Maine Book 1, page 190 and Maine 1937A Field Book, pages 260 thru 263, retraces Dorr's record and monuments the corner with an "Official Corner", referenced by W. P. stump 20" S82°W, 1.255 chains.

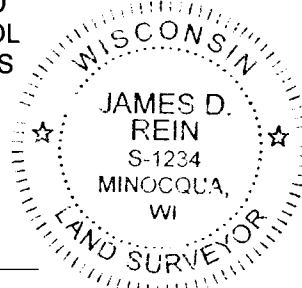
April 18, 2017 - James D. Rein, PLS No. 1234, we recover an Oneida County capped 2.4" dia. aluminum monument approximately 21 feet westerly of Makar Road centerline. Although the origin of this monument is unknown, it's position based on county published coordinates (S17°50'32"W, 1993.23') is harmonious with Maine's record course and distance (S16°36'W, 1993.32') to the southeast section corner. I accept the existing monument as best available evidence of the original corner position and we made reference ties as shown in the plan.

The coordinate value shown has been verified by at least one of the following methods: 1) comparison to a previously GPS determined published value; 2) the value is the average of two or more GPS observations at a markedly different time; 3) one or more distances were measured back to the GPS observed corner from temporary GPS observed offset locations.

(c)(d)(e) PLAN VIEW OF CORNER WITH TIES TO AT LEAST 4 WITNESS MONUMENTS. IF IN DISAGREEMENT WITH PREVIOUSLY ESTABLISHED CORNER, SHOW THE DISTANCE BETWEEN THE TWO CORNERS AND ALSO INDICATE THE TIES TO THE DISPUTED CORNER.



(i) I, JAMES D. REIN, PROFESSIONAL LAND SURVEYOR NO. S-1234 HEREBY CERTIFY THAT THE CORNER LOCATION ON THIS RECORD WAS DETERMINED BY ME OR UNDER MY DIRECTION AND CONTROL AND THAT THIS U.S. PUBLIC LAND SURVEY MONUMENT RECORD IS CORRECT AND COMPLETE TO THE BEST OF MY KNOWLEDGE AND BELIEF.



[Handwritten Signature]

5-15-17

SIGNATURE

DATE

INDEX NO. X-5
3711312000