

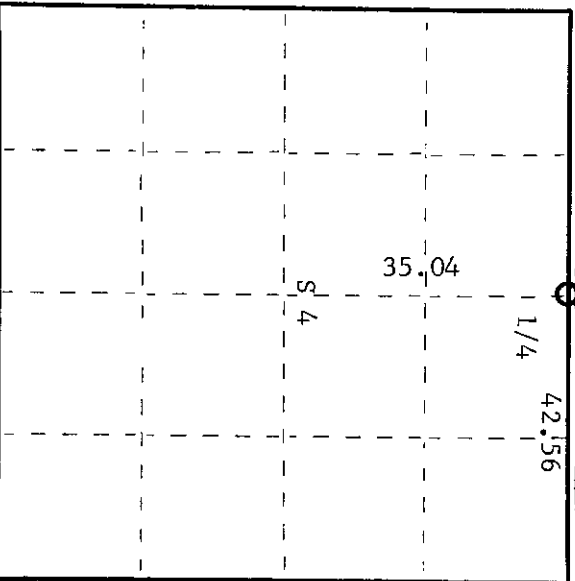
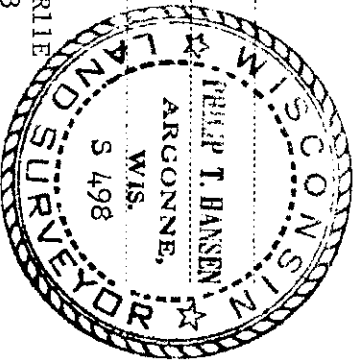
CERTIFIED LAND CORNER RESTORATION

Index No. A-11

State of Wisconsin }
County of Oneida } ss.

I Philip T. Hansen, do hereby certify that on the 13th day of January, 1975, I found evidence of the 1/4 corner of Sec. 33 - Sec. 4 Township 37 and 36 North, Range 11 East, Fourth Principal Meridian, as described hereon; and that from this evidence I established a new monument and accessories as described hereon to perpetuate the original location of this corner.

Resident witnesses:



○ = Corner monument restored.

History of original corner establishment:

Original corner established by Wm. E. Dougherty, Gov. Deputy Surveyor, in 1859. Corner re-established by D.H. Vaughan, County Surveyor, in 1907. He ran the line from the S-1/4 to N-1/4 post and at 72.70 chains he fell 2.50 chains west of N-1/4 post. He records the distance as 37.66 chains from S-1/4 to C-1/4 Corner and 35.04 chains from C-1/4 to N-1/4. Corner established by V.M. Maine, County Surveyor, in 1936 but made no mention of finding H.C. Lawrence's, Registered Land Surveyor, retracement survey of 1952. States he ran from the corner of Sec. 33-34-3&4 West (var. 0°) a distance of 42.56 chains at which point an old wooden 3 x 3 stake and iron pipe bears due South 2.48 chains. Old stake was charred. Set 4" cedar post.

Description of corner evidence found:

Recovered H.C. Lawrence's 4" cedar post, squared and scribed S33 1/4S S4 1/4 in fair condition. Remains of old post in evidence but no iron pipe recovered.

Description of monument and accessories I established to perpetuate the original location of this corner.

Set new 2-1/2" x 5' galvanized iron pipe with brass cap stamped -
New BT's. Sugar maple 7" N63°E 51 lks. Scribed 1/4 BT S498 T37N, R11E
Red maple 7" N6°W 42-1/2 lks. Scribed 1/4 BT T36N, R11E

S 33
1/4
S 4
T36N, R11E
CPI-1975

Dated at Rhinelander, Wis., this 16th day of June, 1975

Signature Philip T. Hansen Title Registered Land Surveyor Registration No. S-498
County Surveyor, Registered Land Surveyor, or other duly authorized official

Office of Register of Deeds, County of Oneida. I hereby certify that the within instrument was filed in this office for record on the 1st day of October, 1975 at 3:00 o'clock P.M.

Dona Savage Swahn
(Register of Deeds)

By: Deputy