

CERTIFIED LAND CORNER RESTORATION

Index No. **A 15**

State of Wisconsin

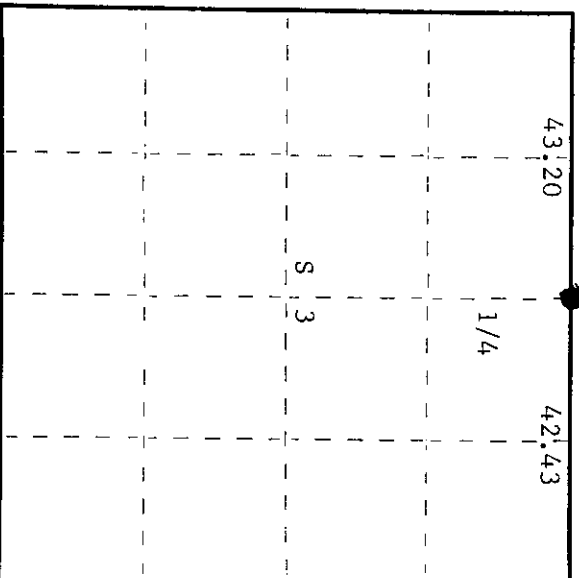
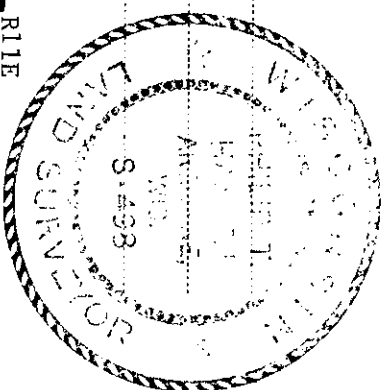
County of Oneida } ss.

I, Phillip T. Hansen, do hereby certify that on the 4th day of September, 1975, I found evidence of the Quarter Corner corner of Sections 34 and 3 Township 37 and 36, North, Range 11 East, Fourth Principal Meridian, as described hereon; and that from this evidence I established a new monument and accessories as described hereon to perpetuate the original location of this corner.

Resident witnesses:

Glen Barker

Jim Clafflin



○ = Corner monument restored.

History of original corner establishment:
Original corner established by Alfred Millard, Government Deputy Surveyor, in 1858 from which hemlock 8" bears S52°W, 14 links and maple 8" bears S37°E, 16 links. Corner restored by D.H. Vaughan, County Forester, in 1908. The hemlock BT was gone but the maple S37°E, 16 links was still green and standing. Marked a cedar 16", S43°W, 61 links.

Corner recovered by H.C. Lawrence, Registered Land Surveyor, in 1952. Recovered maple BT green and still standing. Recovered cedar 16", S43°W, 61 links. Set new cedar post.

Description of corner evidence found:

Recovered Lawrence's 4" cedar post, squared and scribed 1/4-S S3, 1/4-S S34, in fair condition. Also a 2 1/2" iron pipe with brass cap. Someone had beat on the cap rendering it unreadable.
Recovered original maple BT 8" (14"), S37°E, 16 links, scribing grown over.
Recovered cedar 16" (18"), S43°W, 61 links, scribed 1/4-S BT.

Description of monument and accessories I established to perpetuate the original location of this corner. Replaced wooden post and defaced iron pipe with 2 1/2" iron pipe with brass cap stamped -

No additional accessories established.

S498
T37N, R11E
1/4 S 33
S 1/4

Dated at Rhineland, Wis., this 19th day of September, 1975.

Signature Phillip T. Hansen Title Registered Land Surveyor Registration No. S-498
(County Surveyor, Registered Land Surveyor, or other duly authorized official)

Office of Register of Deeds, County of Oneida
Instrument was filed in this office for record on the 17th day of November, 1975
at 10:00 o'clock a. M. I hereby certify that the within

Doris George Fiedler
(Register of Deeds)

By _____ Deputy

3711340020

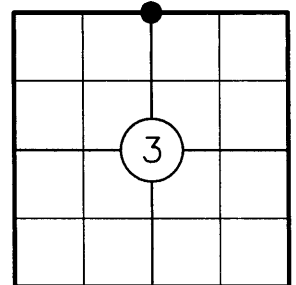
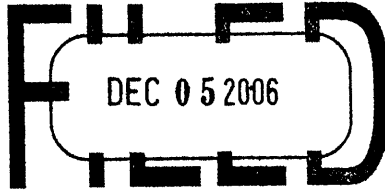
U.S. PUBLIC LAND SURVEY MONUMENT RECORD

NOTE: THIS FORM IS INTENDED AND DESIGNED TO FULFILL ALL REQUIREMENTS OF WISCONSIN ADMINISTRATIVE CODE CHAPTER A-E 7.08 U.S. PUBLIC LAND SURVEY MONUMENT RECORD (3) (a)(b)(c)(d)(e)(f)(g)(h)(i). AN ADDITIONAL SHEET MAY BE ADDED IF NECESSARY TO CONFIRM WITH SAID REQUIREMENTS.

(a) CORNER LOCATION:

N 1/4 CORNER OF SECTION 3
TOWNSHIP 36 NORTH
RANGE 11 EAST
TOWN OF MONICO
ONEIDA COUNTY, WISCONSIN

REGISTER OF DEEDS OFFICE
ONEIDA COUNTY, WIS.



At _____ O'Clock _____ M
THOMAS H. LEIGHTON
REGISTER OF DEEDS

(b) HISTORY OF ORIGINAL CORNER:

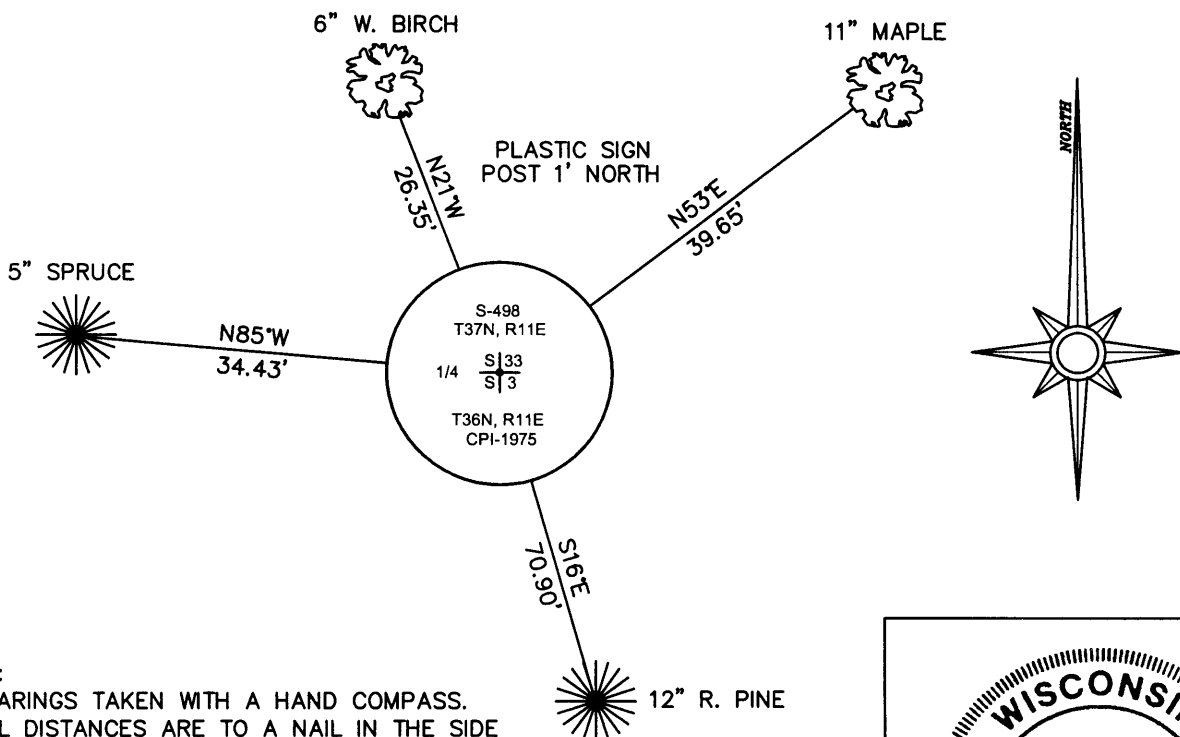
ORIGINAL SURVEYOR: HIRAM C. FELLOWS
DATE OF SURVEY: JULY 1859

ORIGINAL BEARING TREES: 8" HEMLOCK, S52°W, 14 LKS.
8" MAPLE, S37°E, 16 LKS.

(f)(g)(h) DESCRIPTION OF MONUMENT FOUND AT THIS CORNER AND IF IT WAS ACCEPTED STATE ALL EVIDENCE (MATERIAL, TESTIMONIAL, OCCUPATIONAL, PLATS, RECORDS, OTHER MONUMENTS) USED AS A BASIS FOR ESTABLISHING LOCATION. IF REESTABLISHING THROUGH LOST CORNER PROPORTIONATE METHODS, INDICATE ALL MONUMENTS, DISTANCES, AND DIRECTIONS USED TO ESTABLISH. INDICATE TYPE OF MONUMENT AND SIGN POST FOUND OR SET.

- 1908: D.H. VAUGHAN FOUND ORIGINAL MAPLE BT GREEN AND STANDING. MADE A NEW 16" CEDAR BT S43°W, 61 LKS. THE ORIGINAL HEMLOCK BT WAS GONE.
- 1952: H.C. LAWRENCE RECOVERED BOTH THE ORIGINAL MAPLE BT AND VAUGHAN'S CEDAR BT AND SET A NEW CEDAR POST.
- 1975: PHILIP HANSEN RECOVERED LAWRENCE'S 4" CEDAR POST AND A DEFACED 2-1/2" BRASS CAPPED IRON PIPE ALONG WITH THE MAPLE AND CEDAR BT'S. HE REPLACED THE CEDAR POST AND IRON PIPE WITH A NEW 2-1/2" BRASS CAPPED IRON PIPE AND MADE NO ADDITIONAL ACCESORIES.
- 2006: I FOUND A 2-1/2" BRASS CAPPED IRON PIPE 3' ABOVE GRADE IN A GRASSY BOTTOM AREA STAMPED AS SHOWN BELOW. I ALSO FOUND THE MAPLE AND CEDAR BT STUMPS, NOW ROTTED. I MADE NEW ACCESSORIES AS SHOWN BELOW.

(c)(d)(e) PLAN VIEW OF CORNER WITH TIES TO AT LEAST FOUR WITNESSES. IF IN DISAGREEMENT WITH PREVIOUSLY ESTABLISHED CORNER, SHOW THE DISTANCES BETWEEN THE TWO CORNERS AND ALSO INDICATE THE TIE TO THE DISPUTED CORNER.



NOTES:

- 1.) BEARINGS TAKEN WITH A HAND COMPASS.
- 2.) ALL DISTANCES ARE TO A NAIL IN THE SIDE OF THE TREE.
- 3.) NOT TO SCALE.

I, JEFFREY D. ANDERSON, REGISTERED LAND SURVEYOR NO. 2697, HEREBY CERTIFY THAT THE CORNER LOCATION ON THIS RECORD WAS REFERENCED BY ME OR UNDER MY DIRECTION AND CONTROL AND THAT THIS U.S. PUBLIC LAND SURVEY MONUMENT RECORD IS COMPLETE TO THE BEST OF MY KNOWLEDGE AND BELIEF.

Jeffrey D. Anderson 11/30/06
SIGNATURE DATE



INDEX NO. A 15

3711340020