

CERTIFIED LAND CORNER RESTORATION

Index No.

22-17
W 17

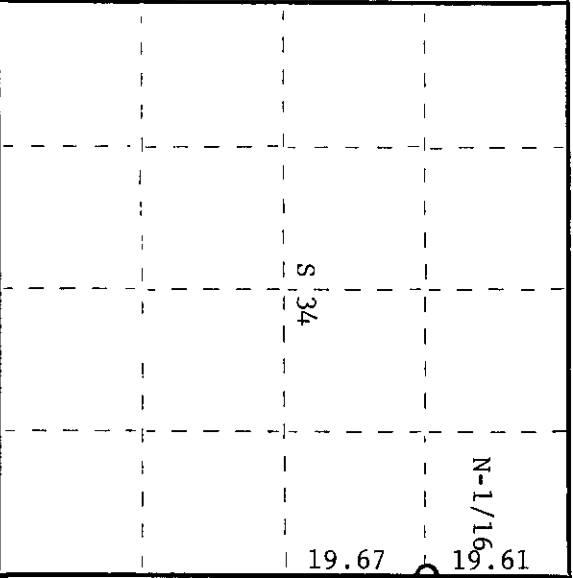
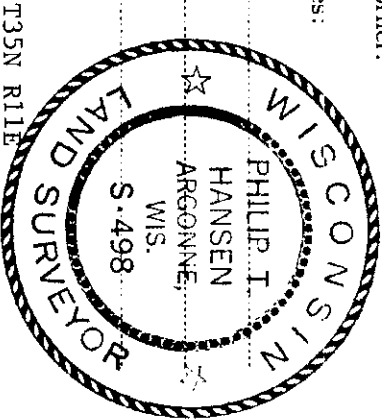
State of Wisconsin } ss.
County of Oneida

I Philip T. Hansen, do hereby
certify that on the 27th day
of May, 19 75, I found

evidence of the N-1/16
corner of Sections 34 and 35
Township 37, North, Range

11 East, Fourth Principal Meridian,
as described hereon; and that from this evidence
I established a new monument and accessories
as described hereon to perpetuate the original
location of this corner.

Resident witnesses:



O = Corner monument restored.

CERTIFIED LAND CORNER RESTORATION

History of original corner establishment:

Original corner established by J.A. Melendy in 1916, from which X on boulder bears
S85 1/2° W 21 links; yellow birch 9" bears S81° E 13 1/2 links; hemlock 14" bears N4° E 19 1/2 links.
Corner restored by H.C. Lawrence, Registered Land Surveyor, in 1952. Replaced Melendy's
post with new 4" cedar post.

Description of corner evidence found:

Recovered H.C. Lawrence's 4" cedar post, squared and scribed N-1/16 S34; N-1/16 S35,
in fair condition.

Recovered OBT's - yellow birch 9"(12) S81° E 13.5 links, scribed N-1/16 S35 NBT.
Hemlock 14"(16) N4° E (N2° E) 19.5 links
Boulder with X S85° 30' W (S87° 9' W) 21 links.

Description of monument and accessories I established to perpetuate the original location of this corner.
Replaced H.C. Lawrence's 4" cedar post with 1 1/2" O.D. iron pipe with brass
cap stamped -

Old hemlock BT rescribed N-1/16

S498
T37N R11E
N-1/16 S34 | S35
CPI-1975

Dated at Rhineland, Wis., this 10th day of June, 19 75

Signature Philip T. Hansen Title Registered Land Surveyor Registration No. S-498
(County Surveyor, Registered Land Surveyor, or other duly authorized official)

Office of Register of Deeds, County of Oneida
Instrument was filed in this office for record on the 1st day of October, 19 75
at 3:00 o'clock P. M.

Terrie Savage Kuehn
(Register of Deeds)

By: _____ Deputy

3711343000