

CERTIFIED LAND CORNER RESTORATION

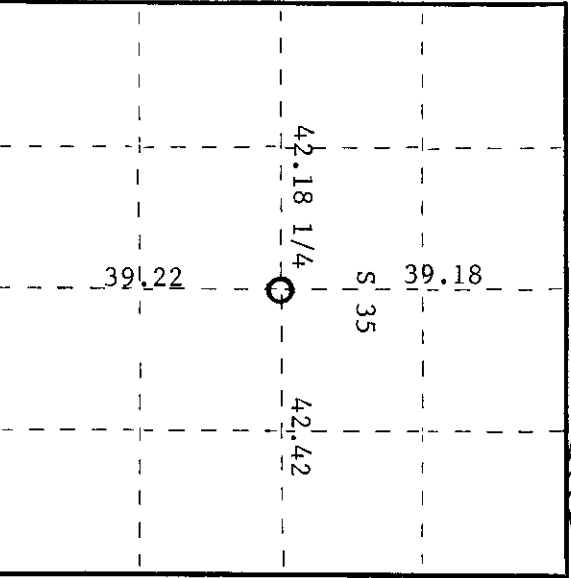
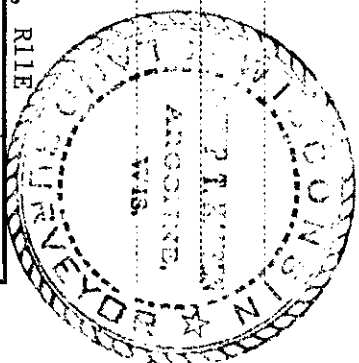
Index No. X-19

X/19

State of Wisconsin }
 County of Oneida } ss.

Phillip T. Hansen, do hereby certify that on the 6th day of January, 1975, I found evidence of the C-1/4 corner of Section 35 Township 37, North, Range 11 East, Fourth Principal Meridian, as described hereon; and that from this evidence I established a new monument and accessories as described hereon to perpetuate the original location of this corner.

Resident witnesses:



○ = Corner monument restored.

History of original corner establishment:

This corner established by H.C. Lawrence during his retracement survey in 1949. His notes state that starting from the 1/4 corner between Sections 26 and 35 he ran South 2°00' East (mag.) 78.40 chains to intersect the township line 63 links West of original 1/4 post. True bearing of line S2°28'E. He then started from the West 1/4 corner, Section 35 and ran N88°30'E (mag.) 84.60 chains to a point which was 24 links North of the 1/4 corner between Sections 35 and 36. Bearing of true line N88°40'E. He set a 6" cedar post for the 1/4 corner 14 links South of the E-W random line and 31 links East of the N-S random line. Made BT's Yellow birch 15" Sugar 7" N28W 24 1/2 links

Description of corner evidence found:

Recovered 6" cedar post, squared and scribed S35 C-1/4 S35 with rock cairn around stake in good condition.

Recovered old BT Sugar maple 7" N28W 24 1/2 links scribed 1/4-S
 Yellow birch 15" S26E 49 1/2 links stump only

Description of monument and accessories I established to perpetuate the original location of this corner.

Set 2-1/2" x 5' galvanized iron pipe with brass cap stamped -

New BT's Sugar maple 8" S28W 39 1/2 links scribed C-1/4 BT T37N, R11E
 Sugar maple 9" S25E 32 links scribed C-1/4 BT S 35

C-1/4 S 35
 CPT-1975

Dated at Rhineland, Wis., this 1st day of October, 1975.

Signature Phillip T. Hansen Title Registered Land Surveyor Registration No. S-498
 (County Surveyor, Registered Land Surveyor, or other duly authorized official)

Office of Register of Deeds, County of Oneida, I hereby certify that the within instrument was filed in this office for record on the 1st day of October, 1975 at 3:00 o'clock P. M.

Dorrie Venner Tueloh
 (Register of Deeds)

By: _____ Deputy

3711352020