

180728

DEEDS OFFICE
PRICE COUNTY, WIS.
Received for Record

APR 25 1969

AT 2:30 O'CLOCK P.M. DULY RECORDED III

VOL 1 OF RECORDS ON PAGE 168

Charles E. Pruba

R9-7150-11 (9/1/66)

H. C. MILLER CO., MILWAUKEE 430024

REGISTERED DEEDS

CERTIFIED LAND CORNER RESTORATION

180728

State of Wisconsin

County of Price

ss.

I, Elwood L. Olson, do hereby certify that on the 9th day of April, 1968, I found evidence of the Section corner of Sections 13-18-19-24 Township 38 North, Range 3 and 4 East, Fourth Principal Meridian, as described hereon; and that from this evidence I established a new monument and accessories as described hereon to perpetuate the original location of this corner:

Description of original monument and accessories and subsequent restorations:

Original corner established in 1865 by Alex Anderson, Government Deputy Surveyor.
Hemlock 28, N42W, 14 links.
Sugar 10, N51E, 53 links.
Hemlock 12, S57E, 14 links.
Birch 7, S60W, 30 links.

Description of corner evidence found:

Corner marked by a 4 inch squared cedar post extending 3 1/2 ft. above ground. Remains of a very old squared wood post alongside of the cedar post. Checked for original bearing tree evidence and found:

Remains of stump, N51°E, 53 links.
Remains of large Birch stump, S60°W, 16 feet.

Found Wisc. Conservation Dept. location poster dated 1953, 1958 and 1959 on a 16" Y. Birch bearing S4°E, 12.3 feet from corner. The corner is 59 feet north of center of a road brng. N33°E.

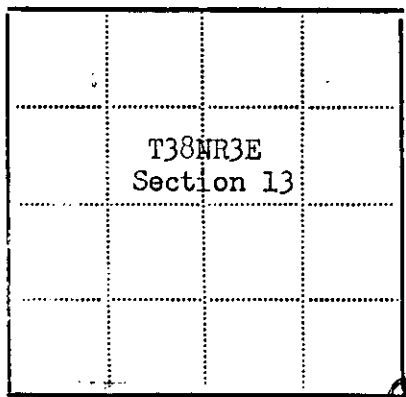
Description of monument and accessories I established to perpetuate the original location of this corner:

Set 2" dia., 5' long, flanged bottom, concrete filled, galvanized wrought iron pipe, extending 14" above ground, with 3" bronze tablet on top stamped: T38N,R3E,R4E, S13, S18, S19, S24, S.785, 1968. Placed a mound of stone around monument.

Blazed and scribed new bearing trees as follows:

Maple 11" N74°W, 30.8 feet.
Maple 9" S40°E, 3.5 feet.
Maple 9" S58°W, 30.7 feet.

Iron sign post, North, 2.1 feet.



⊙ - Corner monument restored
□ -

Resident witnesses.....

Dated at Park Falls Wisconsin, this 14th day of February 1969..

Signature Elwood L. Olson Title Registered Land Surveyor
(County Surveyor, Registered Land Surveyor, or other duly authorized official)

Surveyors Registration No. S-785

Office of..... County of.....

I hereby certify that the within instrument was filed in this office for record on the.....day of.....19....., and was filed in Book No.....Page No.....of County Records.

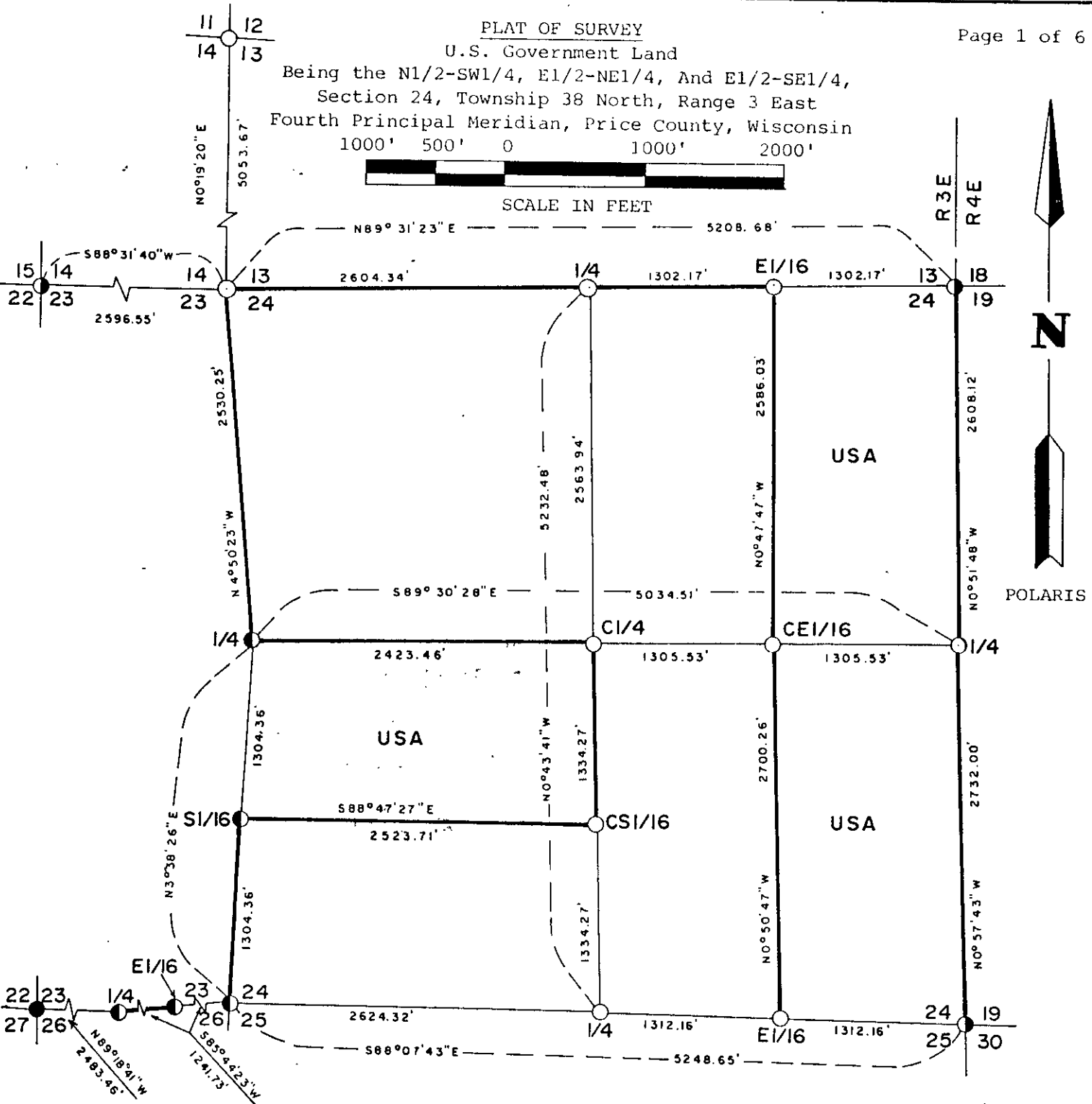
Signature..... Title.....

Township....., Range....., Section....., Index No....., Page No.....

3805130000

138-4
1-25

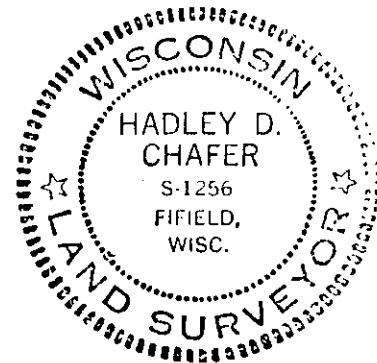
Stock No. 26273



- - Recovered a 1"x24" Iron Bar & 2 Reference Monuments, by S-785 in 1973.
 - - Recovered a 2"x60" Concrete filled Iron Pipe w/Brass Tablet stamped to Identify Corner.
 - - Corner Monumented. Set 5/8"x24" Iron Pin & 2 Ref. Monuments 2"x48" Iron Pipes w/Brass Tab.
 - - Corner Monumented. Set a 2"x48" Iron Pipe with 3" Brass Tablet stamped to identify Corner.
- True Line Established this Survey.

USA - U.S. Government Land

Conversion Factor
 Feet to Meters = 0.304801
 Meters to Feet = 3.280833

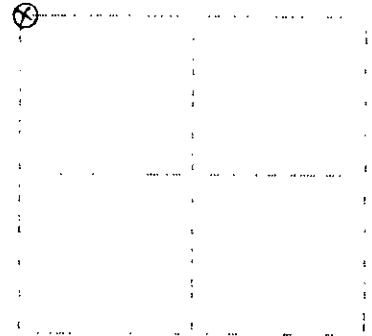


Hadley D. Chafer
 HADLEY D. CHAFER
 DATE 3/31/88
 (38-A)
 (38-A)
 See P-1 for
 3803130000

U.S. PUBLIC LAND SURVEY MONUMENT RECORD

Notes: This form is intended and designed to fulfill all requirements of Wisconsin Administrative Code, Chapter A-E 7.03 U.S. Public Land Survey Monument Record (31.16) or (31.16.1) (a)-(g). An additional sheet may be added if necessary to conform with said requirements.

(a) Corner location: Township 38 North
 Range 4 East
 Town of Minocqua
 Oneida County, Wisconsin



Section 19

(b)(i)(ii) Description of monument found at this corner and if it was accepted, state all evidence (material, testimonial, occupational, plats, records, other monuments used as a basis for accepting. If not accepted or if nothing was found, state evidence used as basis for establishing location. If reestablished through lost corner proportionate methods, indicate all monuments, distances and directions used to establish. Indicate type of monument found or set and sign post.

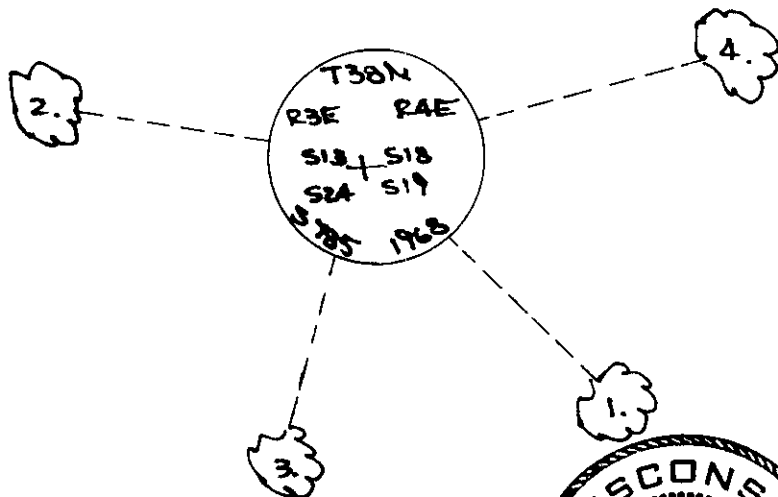
July, 1864: Alexander Anderson, US Deputy Surveyor notes the following: 80.00 set post for corner to sections 10, 18, 19 & 24; hemlock 28 N42W, 14 lks.; sugar 10 N51E, 57 lks.; hemlock 12 S57E, 14 lks.; birch 7 S60W, 30 lks.

September 29, 1990: I found and accepted a 3-1/2" dia. iron post with 3" dia. brass cap 12" above the ground marked as shown below. I found the following witnesses: set nail in USFS maple 13" S47E, 3.46 feet; set nail in USFS maple 13" N81W, 30.69 feet; dead USFS maple 8" S54W, 39.5 feet. I established the following witnesses: set nail in maple 8" S15W, 39.25 feet; set nail in maple 11" N75E, 11.06 feet; set plastic sign post north, 1 foot.

(c) (i) Plan view of corner with ties to at least four witness monuments. If in disagreement with previously established corner, show the distances between the two corners and also indicate the ties to the disputed corner.

1. nail in maple 13" S47E, 3.46 feet.
2. nail in maple 13" N81W, 30.69 feet.
3. nail in maple 8" S15W, 39.25 feet.
4. nail in maple 11" N75E, 11.06 feet.

(not to scale)



I, Jeffrey W. Austin, Registered Land Surveyor S-1885 certify that the corner location on this record was determined by me or under my direction and control and that this U.S. Public Land Survey Monument Record is correct and complete to the best of my knowledge and belief.



Jeffrey W. Austin
 OCTOBER 30, 1990
 Date

Index no. N-1

3803130000