

CERTIFIED LAND CORNER RESTORATION

(38-4) 7-25
Index No. 2

State of Wisconsin

County of Price } ss.

I Elwood L. Olson, do hereby

certify that on the 10th day of January, 1961, I found

evidence of the Section corner of Sections 19-21-25-30

Township 38 North, Range 3 and 4 East, Fourth Principal Meridian,

as described hereon; and that from this evidence I established a new monument and accessories as described hereon to perpetuate the original location of this corner.

Resident witnesses:

History of original corner establishment:

Original corner established in 1864 by Alex Anderson, Government Deputy Surveyor.

874-9 form by C.E. Knutson dated 10/29/1936. Orig. corner. Apparently an old BR in poor condition.

- Birch 20 S74W 8 11inks
- Sugar 9 N52E 13 11inks
- Hemlock 7 N69E 24 11inks
- Birch 10 S30E 37 11inks

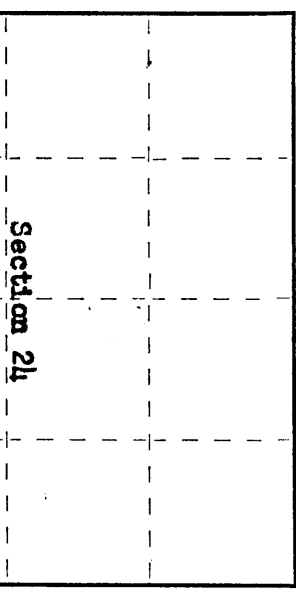
Description of corner evidence found:

Found corner marked by a 4" squared cedar post. Nekocsa Edwards Paper Co. location tag nailed on post. Found decayed remains of very old post laying on ground alongside cedar post. Check for evidence of original bearing trees and at N52°07', 13 links found root holes and remains of fallen decayed Maple. The corner falls on an L shaped mound which is 12 ft. long, 3 1/2 ft. wide, and 1 1/2 ft. high.

Description of monument and accessories I established to perpetuate the original location of this corner.

In place of said cedar post set 2" inside dia., 5' long, flanged bottom, concrete filled, galvanized wrought iron pipe with 3" bronze tablet stamped: T38N, R3E, S19, S24, S25, S30, S.785, 1964. Monument set 12" above ground. Set cedar post, top foot painted red, 3.2 ft. S. of monument. Blazed and scribbled new bearing trees as follows:
 Maple 16" S53°0E, 12.7 feet, marked ⊗ BR S30 BR.
 Maple 9" N67°0W, 10.8 feet, marked ⊗ BR S24 BR.
 Maple 6" S44E, 22.8 feet, marked ⊗ BR S30 BR.
 Nail metal BR sign on all BRs. Faint BRs red.

T 38 N R 3 E



○ = Corner monument restored.

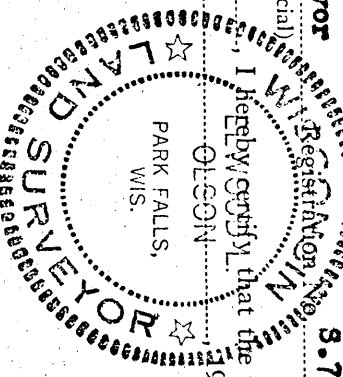
Dated at Park Falls, Wis., this 9th day of March, 1961

Signature: Elwood L. Olson, Registered Land Surveyor, 9.785

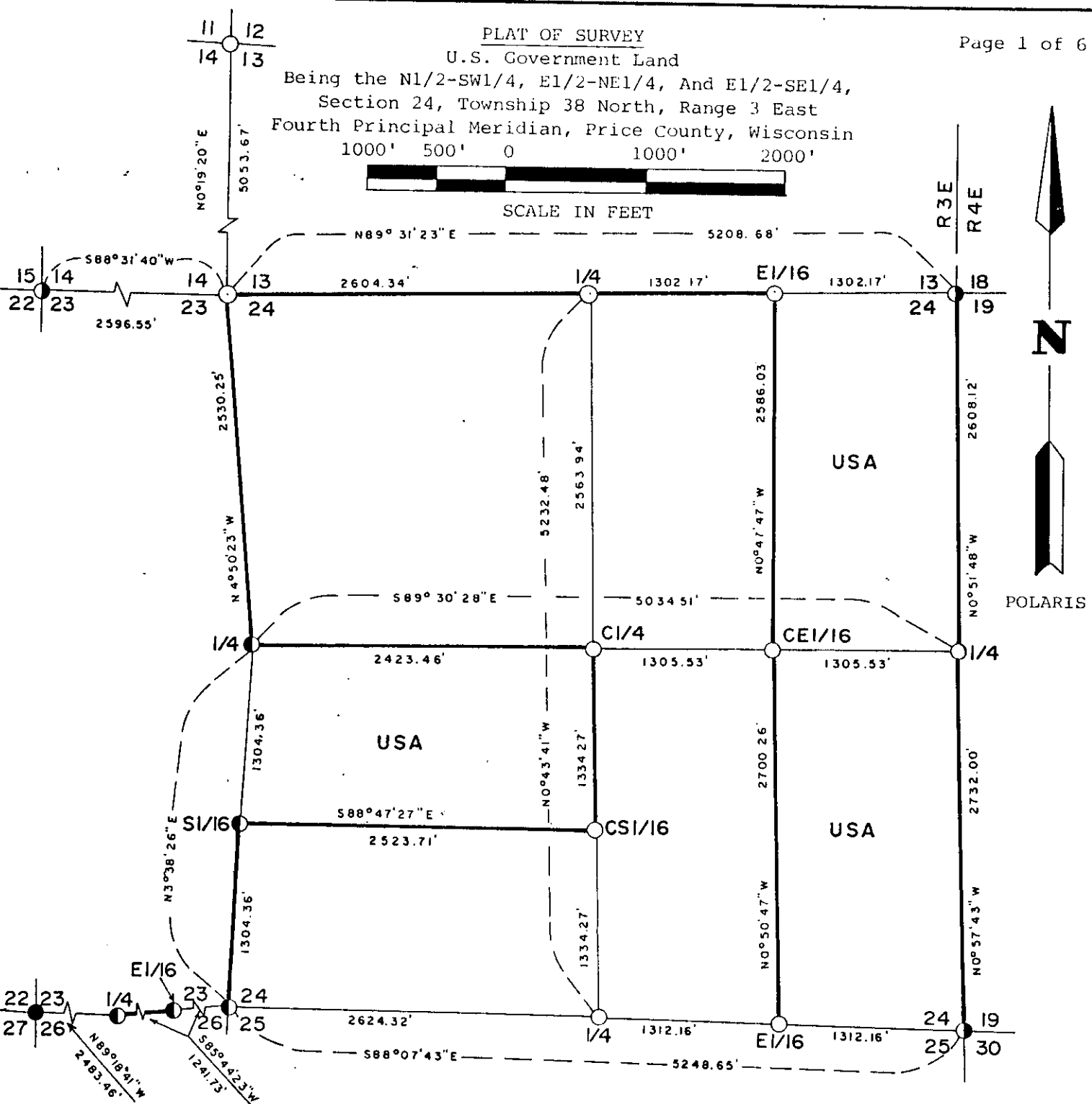
Office of Register of Deeds, County of Price, Wisconsin. I hereby certify that the within instrument was filed in this office for record on the 19th day of March, 1961, at 10 o'clock A.M.

(Register of Deeds)

By: Deputy



Stock No. 26273



- - Recovered a 1"x24" Iron Bar & 2 Reference Monuments, by S-785 in 1973.
 - ◐ - Recovered a 2"x60" Concrete filled Iron Pipe w/Brass Tablet stamped to Identify Corner.
 - ◑ - Corner Monumented. Set 5/8"x24" Iron Pin & 2 Ref. Monuments 2"x48" Iron Pipes w/Brass Tab.
 - - Corner Monumented. Set a 2"x48" Iron Pipe with 3" Brass Tablet stamped to identify Corner.
- True Line Established this Survey.

USA - U.S. Government Land

Conversion Factor
 Feet to Meters = 0.304801
 Meters to Feet = 3.280833



Hadley D. Chafer
 HADLEY D. CHAFER
 3/31/88
 DATE

See P-1 for
 191-b
 (38-4)
 R-1
 (38-4)

3803240000

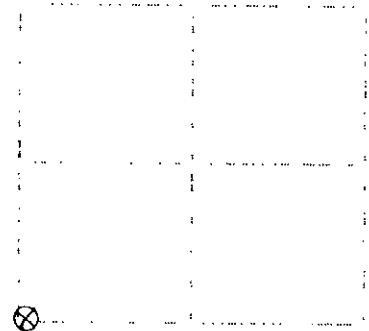
U.S. PUBLIC LAND SURVEY MONUMENT RECORD

Note: This form is intended and designed to fulfill all requirements of Wisconsin Administrative Code, Chapter A-E 7.09 U.S. Public Land Survey Monument Record (Wisconsin Code (A-E 7.09) 1). An additional sheet may be added if necessary to conform with said requirements.

(a) Corner location: Township 38 North
Range 4 East

Town of Minocqua

Oneida County, Wisconsin



Section 19

(b) (1) (a) Description of monument found at this corner and if it was accepted, state all evidence (material, testimonial, occupational, plats, records, other monuments) used as a basis for accepting. If not accepted or if nothing was found, state evidence used as basis for establishing location. If reestablished through lost corner proportionate methods, indicate all monuments, distances and directions used to establish. Indicate type of monument found or set and sign post.

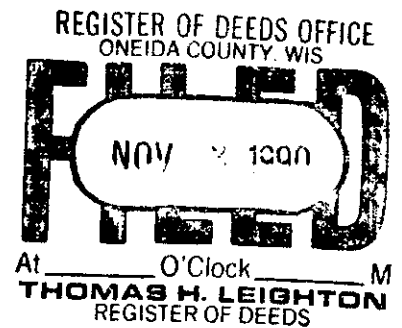
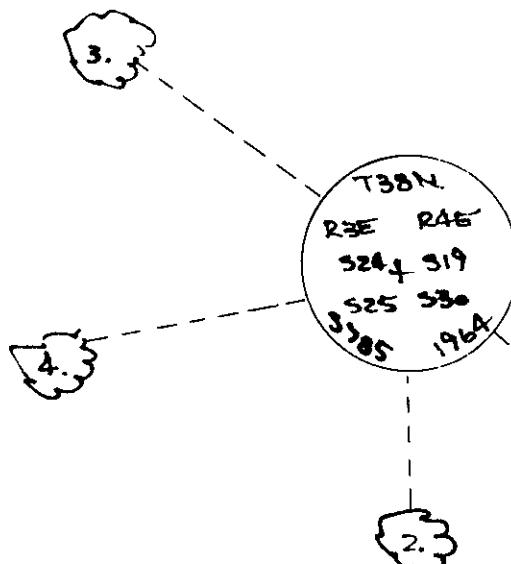
July, 1864: Alexander Anderson, US Deputy Surveyor notes the following: Bu. 10 set post for corner to sections 19, 24, 25 & 30; Birch 20 S74W, 8 lvs.; sugar P N52E, 10 lvs.; hemlock 7 N69E, 24 lvs.; birch 11 S79W 17 lvs.

September 29, 1890: I found and accepted a 2-1/2 dia. iron post with 3" dia. brass cap 16" above the ground marked as shown below. I found the following witnesses: set nail in maple 24" S49E, 12.35 feet; set nail in maple 12" S2E, 22.84 feet; dead USFB maple 14" S74W, 10.9 feet. I established the following witnesses: set nail in maple 7" N54W, 28.08 feet; set nail in maple 8" S79W, 34.38 feet; set plastic sign post north, 1 foot.

(b) (2) Plan view of corner with ties to at least four witness monuments. If in disagreement with previously established corner, show the distances between the two corners and also indicate the ties to the disputed corner.

1. nail in maple 24" S49E, 12.35 feet.
2. nail in maple 12" S2E, 22.84 feet.
3. nail in maple 7" N54W, 28.08 feet.
4. nail in maple 8" S79W, 34.38 feet.

(not to scale)



I, Jeffrey W. Austin, Registered Land Surveyor S-1885 certify, that the corner location on this record was determined by me or under my direction and control and that this U.S. Public Land Survey Monument Record is correct and complete to the best of my knowledge and belief.

Jeffrey W. Austin
OCTOBER 30, 1900
Date

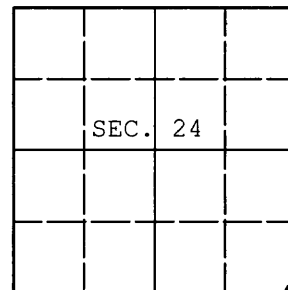


Index no. R-1
3803240000

U.S. PUBLIC LAND SURVEY MONUMENT RECORD

Note: This form is intended and designed to fulfill all requirements of Wisconsin Administrative Code, Chapter A-E 7.08 U.S. Public Land Survey Monument Record (3) (a) (b) (c) (d) (e) (f) (g) (h) (i). An additional sheet may be added if necessary to conform with said requirements.

(a) CORNER LOCATION: WISCRS (Oneida County)
Cor. of Secs. 19, 24, 25 & 30 N: 209,496.48 USft
Township 38 North E: 102,267.19 USft
Range 3 & 4 East of the 4th P.M. Datum: NAD 1983(2011)
Town of Minocqua County of Oneida



(b) HISTORY OF ORIGINAL CORNER ESTABLISHMENT

Original Surveyor: Original Accessories:
Date of Survey: Commenced:
Completed:

(b)(f)(g)(h) Description of monument found at this corner and if it was accepted, state all evidence (material, testimonial, occupational, plats, records, other monuments) used as a basis for accepting. If not accepted or if nothing was found, state evidence used as basis for establishing location. If re-established through lost corner proportionate methods, indicate all monuments, distances and directions used to establish. Indicate type of monument and sign post found or set.

NOTE: This is a perpetuation of a previous USPLS Monument Record by Jeffrey W. Austin, RLS dated October 30, 1990 and filed in the office of the Oneida County Register of Deeds. A complete history of the corner can be found on the previous monument record. I accept the previous location as a true and faithful perpetuation or reestablishment of the original corner location and further perpetuate it as follows.

January 28, 2015: I found and accepted the record monument, a 2.5" diam. iron pipe with a 3" diam. brass cap projecting 16" above the ground surface. The record maple at S2°E is gone. The remaining accessories were found in substantial agreement with the previous record and were not remeasured as the sole purpose of this work is to report the coordinates of the corner point.

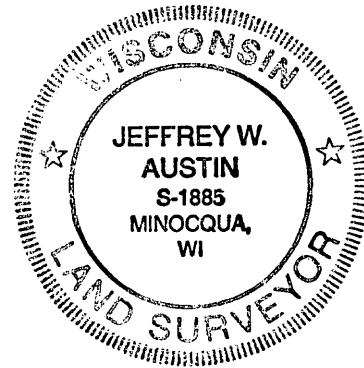
The coordinates shown were derived from a direct RTN GPS observation referenced to the WISCRS network.

(c)(d)(e) Plan view of corner with ties to at least 4 witness monuments. If in disagreement with previously established corner, show the distances between the two corners and also indicate the ties to the disputed.

REGISTER OF DEEDS OFFICE
ONEIDA COUNTY
FILED

MAR 04 2015

AT _____ O'CLOCK _____ M
KYLE J. FRANSON
REGISTER OF DEEDS



(i) I, Jeffrey W. Austin, Registered Land Surveyor No. S-1885, hereby certify that the corner location on this record was determined by me or under my direction and control and that this U.S. Public Land Survey Monument Record is correct and complete to the best of my knowledge and belief.

Signature

MAR 1, 2015

Date