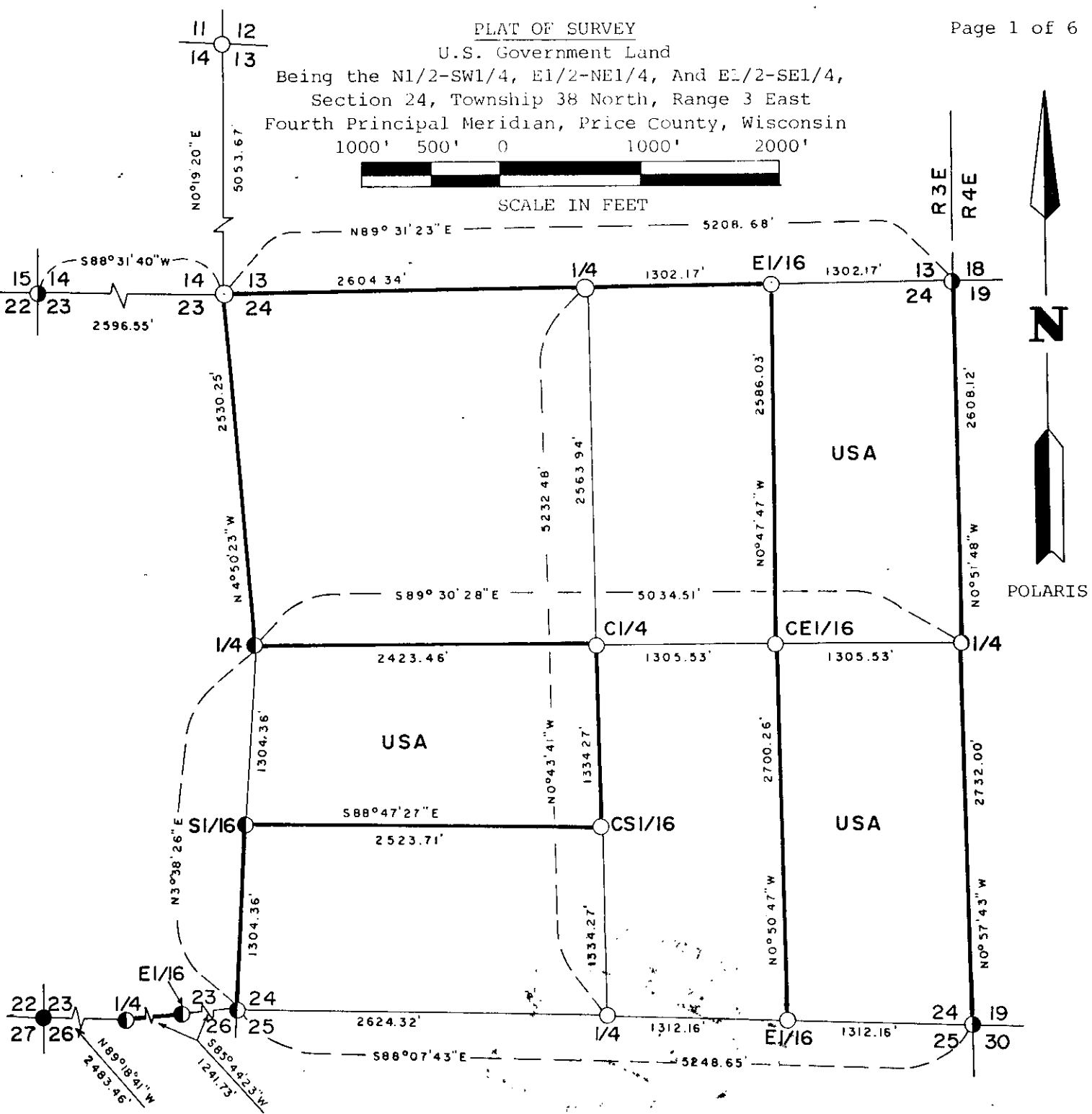


Stock No. 26273



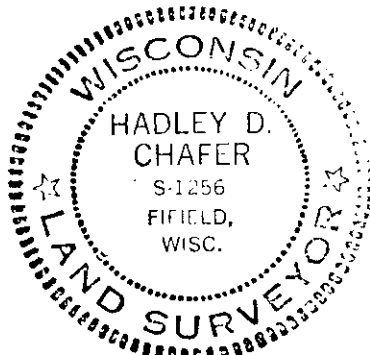
- - Recovered a 1"x24" Iron Bar & 2 Reference Monuments, by S-785 in 1973.
- (with dot) - Recovered a 2"x60" Concrete filled Iron Pipe w/Brass Tablet stamped to Identify Corner.
- (with dot) - Corner Monumented. Set 5/8"x24" Iron Pin & 2 Ref. Monuments 2"x48" Iron Pipes w/Brass Tab.
- (with dot) - Corner Monumented. Set a 2"x48" Iron Pipe with 3" Brass Tablet stamped to identify Corner.
- True Line Established this Survey.

USA - U.S. Government Land

Conversion Factor

Feet to Meters = 0.304801

Meters to Feet = 3.280833



*Hadley D. Chafer* 3/31/88  
 HADLEY D. CHAFER DATE

3803242000

P-1  
(38-4)

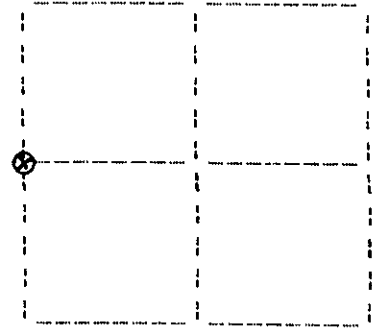
**U.S. PUBLIC LAND SURVEY MONUMENT RECORD**

Note: This form is intended and designed to fulfill all requirements of Wisconsin Administrative Code, Chapter A-E 7.08 U.S. Public Land Survey Monument Record(3)(a)(b)(c)(d)(e)(f)(g)(h)(i). An additional sheet may be added if necessary to conform with said requirements.

(a) Corner location: Township 38 North  
Range 4 East

Town of Minocqua

Oneida County, Wisconsin

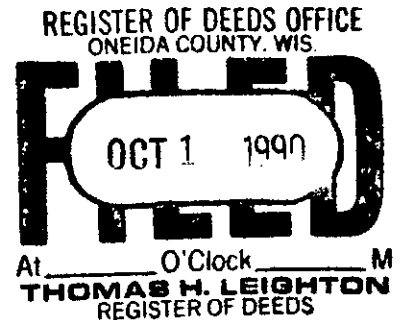


**Section 19**

(b)(f)(g)(h) Description of monument found at this corner and if it was accepted, state all evidence (material, testimonial, occupational, plats, records, other monuments) used as a basis for accepting. If not accepted or if nothing was found, state evidence used as basis for establishing location. If reestablished through lost corner proportionate methods, indicate all monuments, distances and directions used to establish. Indicate type of monument found or set and sign post.

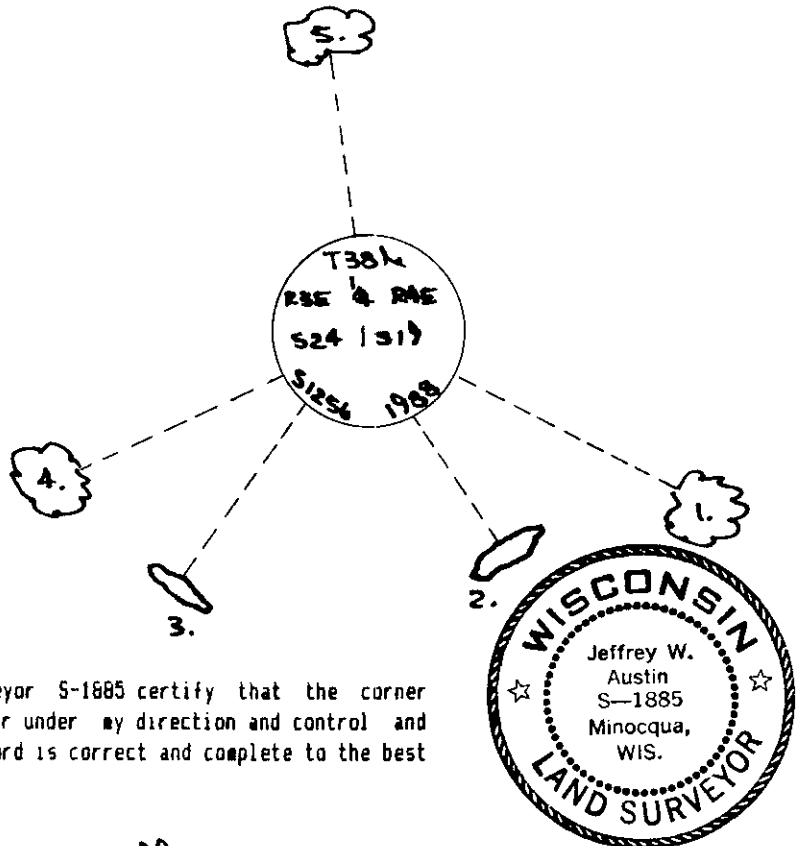
July, 1864: Alexander Anderson, US Deputy Surveyor notes the following: 40.00 set 1/4 section post: cedar 10 S40°W, 25 lks.; hemlock 9 S60°E, 22 lks.

September 29, 1990: I found and accepted a 2-1/2" dia. iron post, 8" above ground with 3" dia. brass cap marked as shown below. I found the following witnesses: set nail in USFS cedar 14° S63E, 40.17 feet; 4" sq. USFS chiselled cross in 9'x6'x4' granite boulder S34°E, 44.75 feet; 4" sq. USFS chiselled cross in 8'x6'x4' granite boulder S35°W, 51.79 feet; dying maple 14° N71°E, 5.4 feet; dying maple 11° S87°W, 25.9 feet. I established the following witnesses: set nail in maple 9° S65°W, 31.88 feet; set nail in maple 7° N8°W, 24.03 feet; set plastic sign post north, 1 foot.



(c)(d)(e) Plan view of corner with ties to at least four witness monuments. If in disagreement with previously established corner, show the distances between the two corners and also indicate the ties to the disputed corner.

1. nail in cedar 14" S63E, 40.17 feet
  2. cross in boulder S34E, 44.75 feet
  3. cross in boulder S35W, 51.79 feet
  4. nail in maple 9" S65W, 31.88 feet
  5. nail in maple 7" N8W, 24.03 feet
- (not to scale)



I, Jeffrey W. Austin, Registered Land Surveyor S-1885 certify that the corner location on this record was determined by me or under my direction and control and that this U.S. Public Land Survey Monument Record is correct and complete to the best of my knowledge and belief.

*Jeffrey W. Austin*  
Signature Date SEPTEMBER 30, 1990

Index no. P-1

3803242000