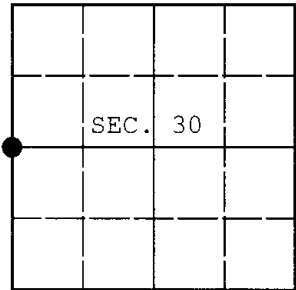


U.S. PUBLIC LAND SURVEY MONUMENT RECORD

Note: This form is intended and designed to fulfill all requirements of Wisconsin Administrative Code, Chapter A-E 7.08 U.S. Public Land Survey Monument Record (3) (a) (b) (c) (d) (e) (f) (g) (h) (i). An additional sheet may be added if necessary to conform with said requirements.

(a) CORNER LOCATION: WISCORS - Oneida County
 1/4 Cor. of Secs. 25 & 30 N: 206,838.78 USft
 Township 38 North E: 102,337.74 USft
 Range 3 & 4 East of the 4th P.M. Datum: NAD 1983(2011)
 Town of Minocqua County of Oneida



(b) HISTORY OF ORIGINAL CORNER ESTABLISHMENT

Original Surveyor: Alexander Anderson Original Accessories:
 Date of Survey: Commenced: July 25, 1864 cedar 8" N78°W, 7 lks.
 Completed: August 7, 1864 tamarack 12" N64°E, 8 lks.

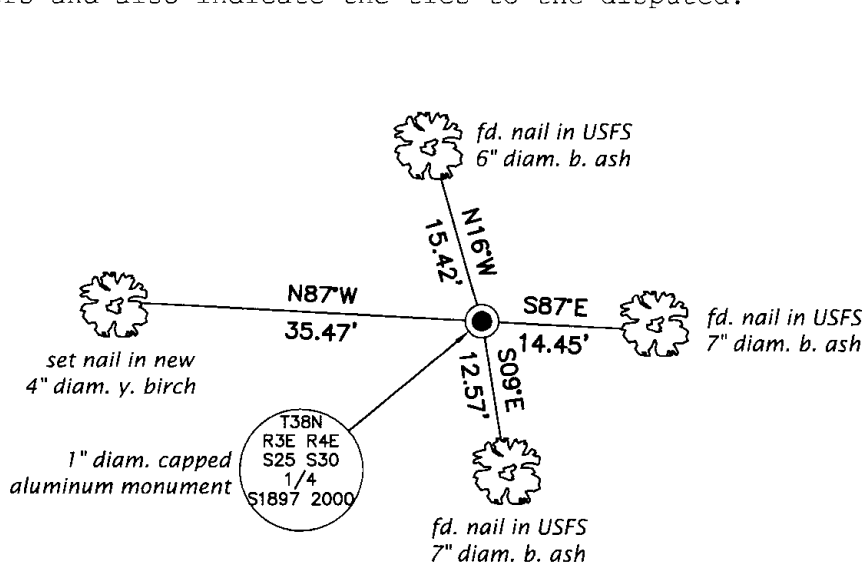
(b) (f) (g) (h) Description of monument found at this corner and if it was accepted, state all evidence (material, testimonial, occupational, plats, records, other monuments) used as a basis for accepting. If not accepted or if nothing was found, state evidence used as basis for establishing location. If re-established through lost corner proportionate methods, indicate all monuments, distances and directions used to establish. Indicate type of monument and sign post found or set.

February 2, 2000: Price County Survey Map No. V-2197 by Randy Erickson (US Forest Service). Corner established by single proportion. Erickson set a 1" x 60" aluminum monument witnessed by: b. ash 6" S10°E, 12.58'; b. ash 7" S87°E, 14.49'; b. ash 4" N19°W, 15.39'.

March 8, 2016: I found and accepted a 1" diam. aluminum pipe with a 2.5" diam. aluminum cap projecting 9" above the ground surface. I found or established accessories as shown below. A USFS steel sign post bears South, 1 ft.

The coordinates shown were derived from two independent RTK observations of the corner point and are referenced to the WISCORS GNSS Network.

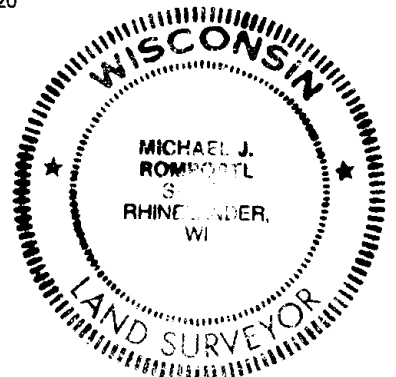
(c) (d) (e) Plan view of corner with ties to at least 4 witness monuments. If in disagreement with previously established corner, show the distances between the two corners and also indicate the ties to the disputed.



REGISTER OF DEEDS OFFICE
 ONEIDA COUNTY
 FILED

DEC 28 2016

AT _____ O'CLOCK _____ M
 KYLE J FRANSON
 REGISTER OF DEEDS



(i) I, Michael J. Romportl, Professional Land Surveyor No. S-1624, hereby certify that the corner location on this record was determined by me or under my direction and control and that this U.S. Public Land Survey Monument Record is correct and complete to the best of my knowledge and belief.

Michael J Romportl 12/23/2016
 Signature Date