

At O'Clock M
U.S. PUBLIC LAND SURVEY MONUMENT RECORD
REGISTER OF DEEDS

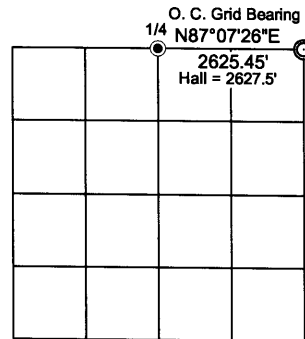
Note: This form is intended and designed to fulfill all requirements of the Wisconsin Administrative Code, Chapter A-E 7.08 U.S. Public Land Monument Record (3)(a)(b)(c)(d)(e)(f)(g)(h)(i). An additional sheet may be added if necessary to conform with said requirements.

(a) CORNER LOCATION:

Northeast corner of Section 11
Township 38 North
Range 4 East
Town Minocqua
County of Oneida

O. C. COORDINATES

North: 225626.2550
East: 128619.2247
Control Station: O. C. 207
Latitude: 45°49'03.59887" N
Longitude: 89°56'30.36164" W
Datum: NAD-83 (91)
Method: Direct RTK GPS



(b) HISTORY OF ORIGINAL CORNER ESTABLISHMENT

SECTION 11

Original Surveyor: Alex Anderson, Deputy Surveyor
Date of Survey: Commenced April 26th, 1865
Completed May 8th, 1865

Original B.T.'S: Tamarac 8" S55°W, 7 links (4.62 feet)
Tamarac 6" S4°E, 7 links (4.62 feet)

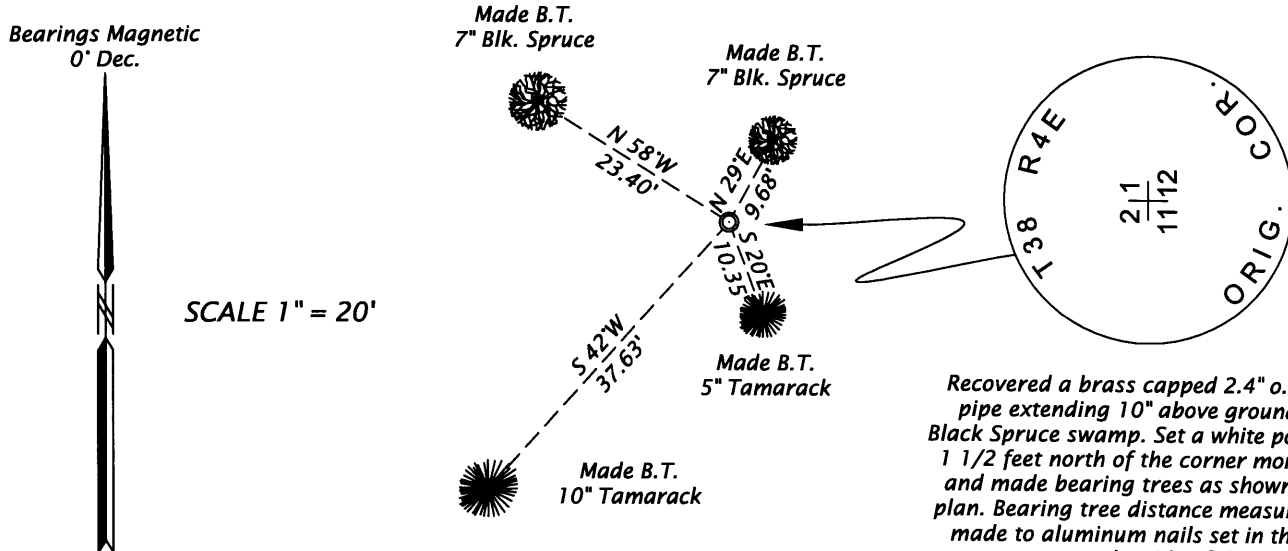
(f)(g)(h) DESCRIPTION OF MONUMENT FOUND AT THIS CORNER AND IF IT WAS ACCEPTED, STATE ALL EVIDENCE (MATERIAL, TESTIMONIAL, OCCUPATIONAL, PLATS, RECORDS, OTHER MONUMENTS) USED AS A BASIS FOR ESTABLISHING LOCATION. IF NOT ACCEPTED OF IF NOTHING WAS FOUND, STATE EVIDENCE USED AS BASIS FOR ESTABLISHING LOCATION. IF REESTABLISHED THROUGH LOST CORNER PROPORTIONATE METHODS, INDICATE ALL MONUMENTS, DISTANCES AND DIRECTIONS USED TO ESTABLISH. INDICATE TYPE OF MONUMENT AND SIGN POST FOUND OR SET.

January 30th & 31st and February 1st & 2nd, 1934 - Ray H. Hall, Old Field Book 58, Pages 4 and 5 - Original SE cor. Section 2 - Set new post by record course and distance from 1 Orig. bearing stp., marks OK. - New V. 2 1/2°E (Tam stub 8" S 1/2°E, 27.6 feet; Tam. stub 8" N62°W, 53.6 feet). Corner is in swamp just N. of clump of Norway snags.

February 20th, 1936 - Ray H. Hall - CC Camp 75-S Book 5, Page 18 - Set County Monument at Orig. SW corner Section 1, T38N, R4E.

March 21, 2009 - James D. Rein, RLS No. 1234 - Recovered a brass capped 2.4" o. d. iron pipe extending 10" above ground level in swamp ± 50 feet north of the northeast corner of upland island in swamp. Cap is rotated to read facing west. There is no remaining evidence of Hall's bearing trees. This monument agrees with Hall's measurement to the 1/4 Corner common to Sections 2 and 11. The monument is in good condition, thus I accept it as marking the original corner and make new bearing trees scribed "BT" as shown below in the plan. Bearing tree distance measurements were made to aluminum nails set in the root crown on the side of the tree. I also placed a white poly stake 1 1/2 feet north of the corner monument.

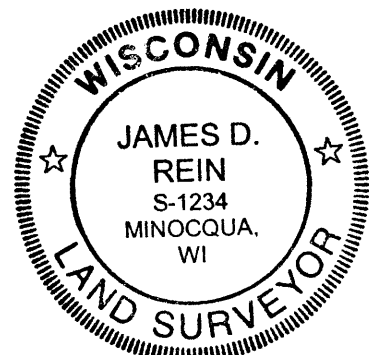
(c)(d)(e) PLAN VIEW OF CORNER WITH TIES TO AT LEAST 4 WITNESS MONUMENTS. IF IN DISAGREEMENT WITH PREVIOUSLY ESTABLISHED CORNER, SHOW THE DISTANCE BETWEEN THE TWO CORNERS AND ALSO INDICATE THE TIES TO THE DISPUTED CORNER.



Recovered a brass capped 2.4" o.d. iron pipe extending 10" above ground in a Black Spruce swamp. Set a white poly stake 1 1/2 feet north of the corner monument and made bearing trees as shown in the plan. Bearing tree distance measurements made to aluminum nails set in the root crown on the side of the tree.

(i) I, JAMES D. REIN, REGISTERED LAND SURVEYOR NO. S-1234 HEREBY CERTIFY THAT THE CORNER LOCATION ON THIS RECORD WAS DETERMINED BY ME OR UNDER MY DIRECTION AND CONTROL AND THAT THIS U.S. PUBLIC LAND SURVEY MONUMENT RECORD IS CORRECT AND COMPLETE TO THE BEST OF MY KNOWLEDGE AND BELIEF.

SIGNATURE *James D. Rein* DATE *March 23, 2009*
3804020000



INDEX NO. *E-21*