

At _____ O'Clock _____ M
THOMAS H. LEIGHTON

U.S. PUBLIC LAND SURVEY MONUMENT RECORD

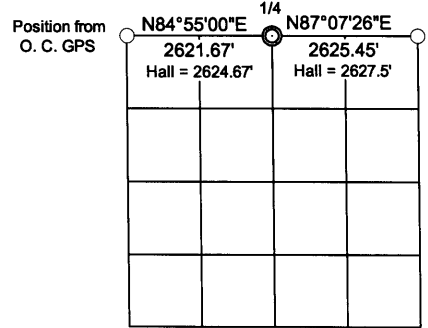
Note: This form is intended and designed to fulfill all requirements of the Wisconsin Administrative Code, Chapter A-E 7.08 U.S. Public Land Monument Record (3)(a)(b)(c)(d)(e)(f)(g)(h)(i). An additional sheet may be added if necessary to conform with said requirements.

(a) CORNER LOCATION:

North 1/4 corner of Section 11
Township 38 North
Range 4 East
Town Minocqua
County of Oneida

O. C. COORDINATES

North: 225494.5133
East: 125997.0790
Control Station: O. C. 207
Latitude: 45°49'03.59887 N
Longitude: 89°56'30.36164" W
Datum: NAD-83 (91)
Method: Direct RTK GPS



(b) HISTORY OF ORIGINAL CORNER ESTABLISHMENT

SECTION 11

Original Surveyor: Alex Anderson, Deputy Surveyor
Date of Survey: Commenced April 26th, 1865
Completed May 8th, 1865

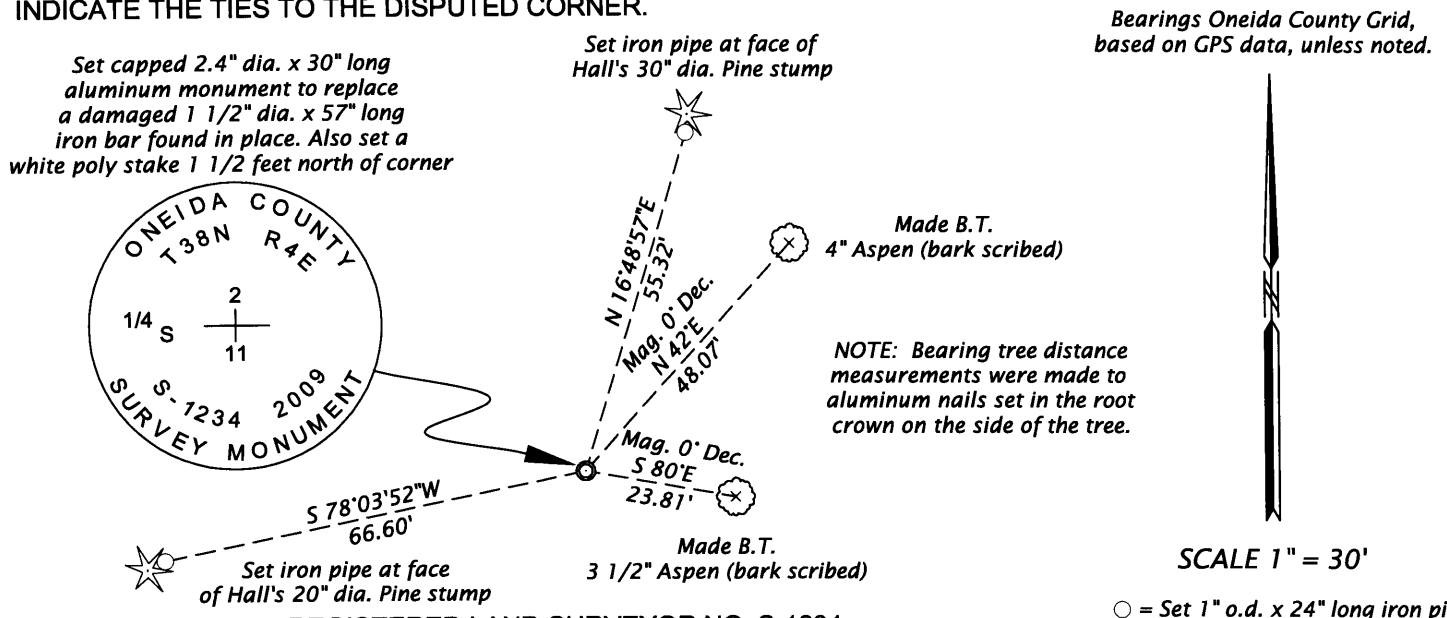
Original B.T.'S: Birch 9" N50°E, 21 links (13.86 feet)
W. Pine 12" S18°W, 40 links (26.40 feet)

(f)(g)(h) DESCRIPTION OF MONUMENT FOUND AT THIS CORNER AND IF IT WAS ACCEPTED, STATE ALL EVIDENCE (MATERIAL, TESTIMONIAL, OCCUPATIONAL, PLATS, RECORDS, OTHER MONUMENTS) USED AS A BASIS FOR ESTABLISHING LOCATION. IF NOT ACCEPTED OF IF NOTHING WAS FOUND, STATE EVIDENCE USED AS BASIS FOR ESTABLISHING LOCATION. IF REESTABLISHED THROUGH LOST CORNER PROPORTIONATE METHODS, INDICATE ALL MONUMENTS, DISTANCES AND DIRECTIONS USED TO ESTABLISH. INDICATE TYPE OF MONUMENT AND SIGN POST FOUND OR SET.

January 30th & 31st and February 1st and 2nd, 1934 - Ray H. Hall, Deputy Co. Surveyor & Camp Engineer, CCC 75-S, Old Field Book 58, pages 4 and 5 - Orig. 1/4 S corner, stub of Pine only - no marks but suspicion of lower facing visible. I maintain this is 1/4 S. - frost and snow not entirely satisfactory conditions. 0° Var. {W. Pine stump 30" N14 1/2°E, 55.1'; W. Pine stump 20" S77°W, 66.6'}

March 21st, 2009 - James D. Rein, RLS No. 1234 - Set a capped 2.4" outside diameter x 30 inch long flange bottom aluminum monument flush to replace a found 1.5 inch diameter x 57" long iron bar (old tie rod ?) apparently damaged by previous logging operations. We find pine both stumps matching the calls in Hall's field notes. I set a white poly stake 1 1/2 feet north of the corner monument and reset the iron bar 1 1/2 feet south of the corner monument and make additional ties to reference the corner as shown in the plan view. The corner is located in a ± 10 year old Aspen slash with many old pine stumps evident.

(c)(d)(e) PLAN VIEW OF CORNER WITH TIES TO AT LEAST 4 WITNESS MONUMENTS. IF IN DISAGREEMENT WITH PREVIOUSLY ESTABLISHED CORNER, SHOW THE DISTANCE BETWEEN THE TWO CORNERS AND ALSO INDICATE THE TIES TO THE DISPUTED CORNER.



(i) I, JAMES D. REIN, REGISTERED LAND SURVEYOR NO. S-1234 HEREBY CERTIFY THAT THE CORNER LOCATION ON THIS RECORD WAS DETERMINED BY ME OR UNDER MY DIRECTION AND CONTROL AND THAT THIS U.S. PUBLIC LAND SURVEY MONUMENT RECORD IS CORRECT AND COMPLETE TO THE BEST OF MY KNOWLEDGE AND BELIEF

SIGNATURE MARCH 23 RD 2009
380420020 DATE 380420020



INDEX NO. E/19