

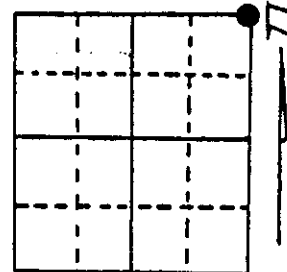
U.S. PUBLIC LAND SURVEY MONUMENT RECORD

Note: This form is intended and designed to fulfill all requirements of Wisconsin Administrative Code, Chapter A-E 5.02, U.S. Public Land Survey Monument Record (3) (a) (b) (c) (d) (e) (f) (g) (h) (i). An additional sheet may be added if necessary to conform with said requirements.

(a) Corner location: Township 38 North
 Range 4 East/West

Town/City/Village Minocqua

County Oneida



Section 10

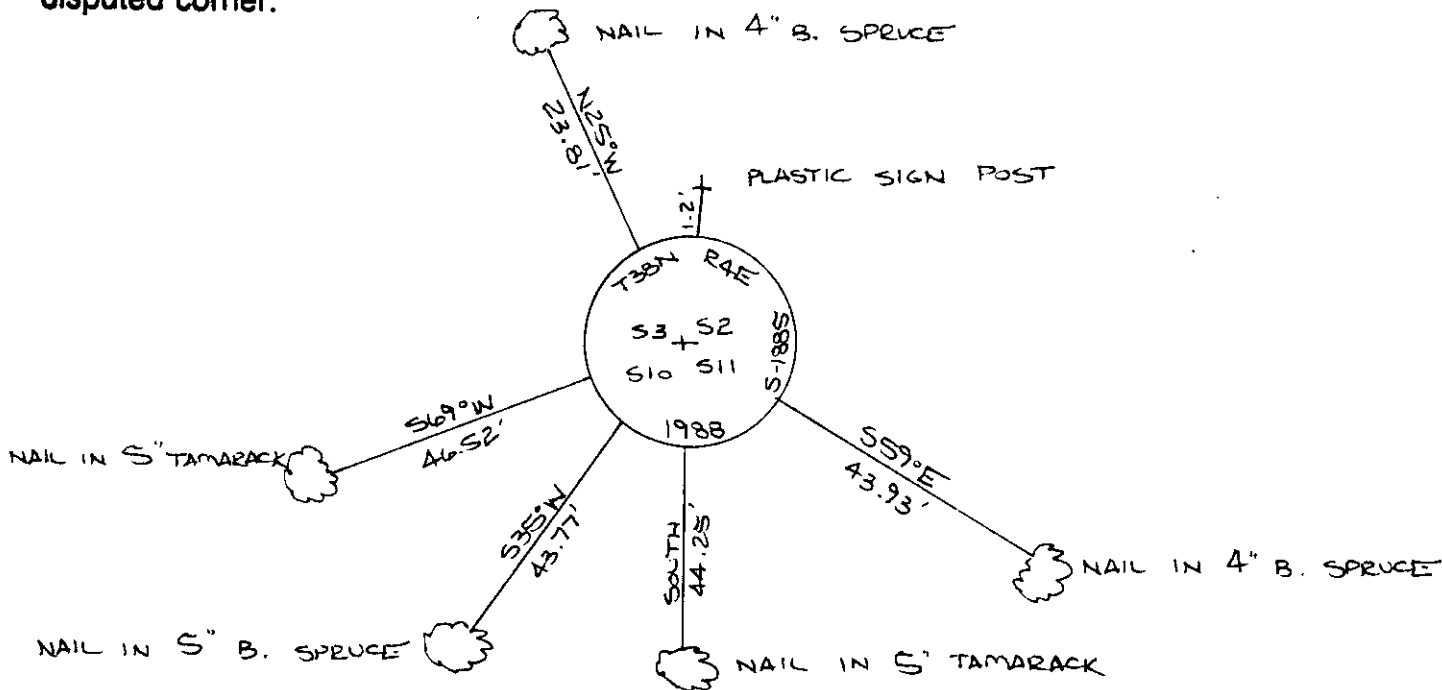
(b) (f) (g) (h) Description of monument found at this corner and if it was accepted, state all evidence (material, testimonial, occupational, plats, records, other monuments) used as a basis for accepting. If not accepted or if nothing was found, state evidence used as basis for establishing location. If reestablished through lost corner proportionate methods, indicate all monuments, distances and directions used to establish.

The original government survey was performed by Alexander Anderson in April, 1865 in which a wood post was set:
 Spruce 5" N50°W, 31 lks.
 Spruce 5" S70°E, 27 lks.

I found and accepted a 1-1/2" dia. 72" long iron pipe with old scribed wood post. I replaced the pipe with a 2-1/2" dia. 72" long aluminum pipe with a 3-1/4" dia. aluminum tablet stamped to identify its location. I established the following witnesses:

- Set nail in E. Spruce 4" S59°E, 43.93 feet
- Set nail in E. Spruce 5" S35°W, 43.77 feet
- Set nail in Tamarack 5" S69°W, 46.52 feet
- (old PT) Set nail in E. Spruce 4" N25°W, 23.81 feet
- (old BT) Set nail in Tamarack 5" South, 44.25 feet
- Set plastic sign post N5°E, 1.2 feet

(c) (d) (e) Plan view of corner with ties to at least 4 witness monuments. If in disagreement with previously established corner, show the distances between the two corners and also indicate the ties to the disputed corner.



(i) I, JEFFREY W. AUSTIN S-1885
 (type or print name) certify that the corner location on this record was determined by me or under my direction and control and that this U.S. Public Land Survey Monument Record is correct and complete to the best of my knowledge and belief.

Signature

Date NOVEMBER 2, 1988



Index No. E-17

3804030000