

FILED
JUN 12 2009

At O'Clock M
U.S. PUBLIC LAND SURVEY MONUMENT RECORD

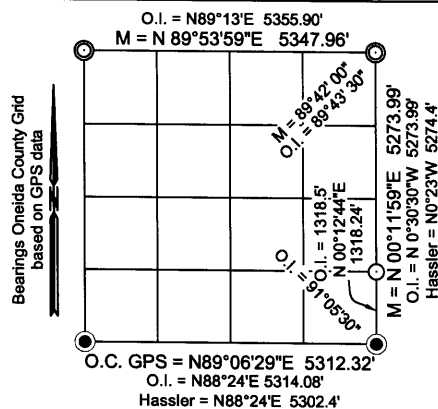
Note: This form is intended and designed to fulfill all requirements of the Wisconsin Administrative Code, Chapter A-E 7.08 U.S. Public Land Monument Record (3)(a)(b)(c)(d)(e)(f)(g)(h)(i). An additional sheet may be added if necessary to conform with said requirements.

(a) CORNER LOCATION:

Northeast corner of Section 9
Township 38 North
Range 4 East
Town of Minocqua
County of Oneida

COORDINATES

North: 225314.3211
East: 118062.8010
Control Station: O. C. 207
Latitude: 45°49' 03.59887" N
Longitude: 89°56' 30.36164" W
Datum: NAD-83 (91)
Method: Direct RTK - GPS



(b) HISTORY OF ORIGINAL CORNER ESTABLISHMENT

Original Surveyor: Alex Anderson, Deputy Surveyor

Date of Survey: Commenced April 26th, 1865
Completed May 8th, 1865

Original B.T.'s: Hemlock 9" N35°W, 7 links (4.62 feet)
Hemlock 10" S46°W, 20 links (13.20 feet)

(f)(g)(h) DESCRIPTION OF MONUMENT FOUND AT THIS CORNER AND IF IT WAS ACCEPTED, STATE ALL EVIDENCE (MATERIAL, TESTIMONIAL, OCCUPATIONAL, PLATS, RECORDS, OTHER MONUMENTS) USED AS A BASIS FOR ESTABLISHING LOCATION. IF NOT ACCEPTED OF IF NOTHING WAS FOUND, STATE EVIDENCE USED AS BASIS FOR ESTABLISHING LOCATION. IF REESTABLISHED THROUGH LOST CORNER PROPORTIONATE METHODS, INDICATE ALL MONUMENTS, DISTANCES AND DIRECTIONS USED TO ESTABLISH. INDICATE TYPE OF MONUMENT AND SIGN POST FOUND OR SET.

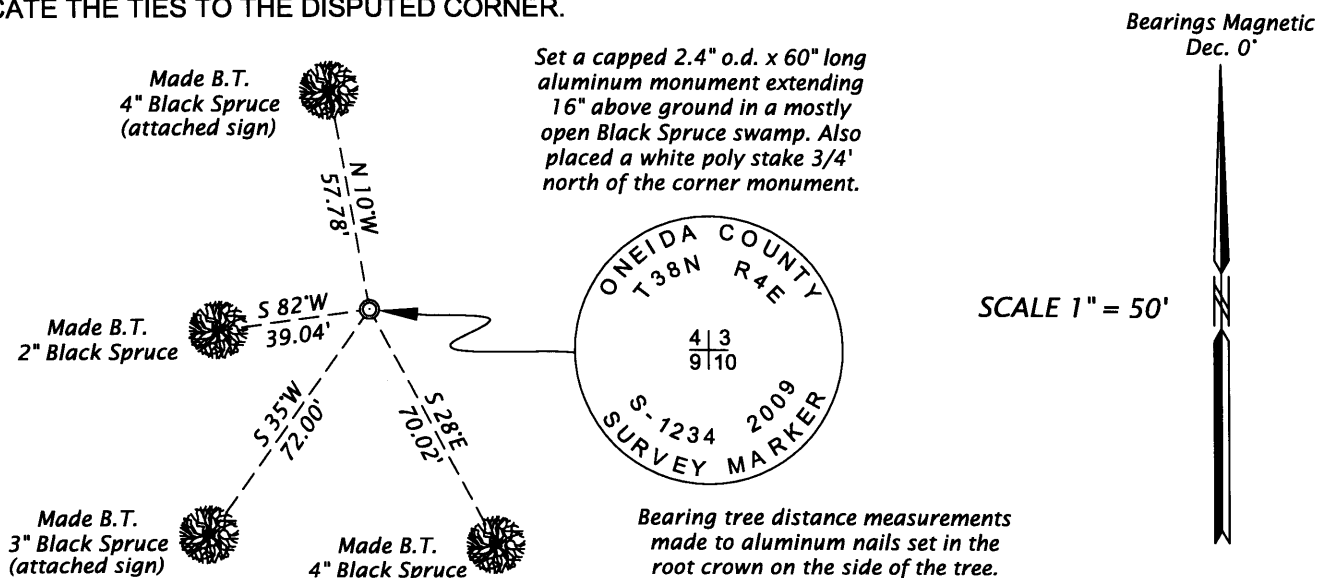
November 5th and 9th, 1937 - Ray H. Hall, Surveyor - CC Camp 75-S Book 9, pages 6 and 7 - Unable to identify any evidence of the original corner and east-west prorate does not fit to an upland island, with Hemlock trees, in swamp.

August 23rd, 1940 - Ray H. Hall, Surveyor - CC Camp 75-S Book 12, page 52 - No sign of bearings nor of the line trees whatever.

1983 - Owens-Illinois ownership boundary survey - drawn by W. H. Stuth - Map of Section 9, T38N, R4E, filed as image 11 in NEPCO Book 2 of the Oneida County Surveyor's Office legends this corner monumented by a post, referenced to the exterior corners by bearings and distances. The map also makes reference to an earlier survey by Ivan Hassler.

May 16th, 2009 - James D. Rein, Professional Land Surveyor No. 1234 - After conducting a thorough search, I am unable to recover an physical evidence of the corner. Because prior surveys have recognized this corner position, I determine it is obliterated, and reestablish it based on O.I.'s record angle and distance from the south section line as shown above in the section diagram. This position is verified by my recovery of the S 1/16 Corner on the east section line as shown in said diagram. I monument the corner position with a capped 2.4" o.d. x 60" long aluminum monument, make bearing trees, marked "BT", as shown in the plan view and place a white poly stake 3/4 foot north of the corner monument. The corner is located in a mostly open Black Spruce swamp.

(c)(d)(e) PLAN VIEW OF CORNER WITH TIES TO AT LEAST 4 WITNESS MONUMENTS. IF IN DISAGREEMENT WITH PREVIOUSLY ESTABLISHED CORNER, SHOW THE DISTANCE BETWEEN THE TWO CORNERS AND ALSO INDICATE THE TIES TO THE DISPUTED CORNER.



(i) I, JAMES D. REIN, PROFESSIONAL LAND SURVEYOR NO. S-1234 HEREBY CERTIFY THAT THE CORNER LOCATION ON THIS RECORD WAS DETERMINED BY ME OR UNDER MY DIRECTION AND CONTROL AND THAT THIS U.S. PUBLIC LAND SURVEY MONUMENT RECORD IS CORRECT AND COMPLETE TO THE BEST OF MY KNOWLEDGE AND BELIEF.

SIGNATURE [Signature] DATE June 9th, 2009
3804040000

