

At O'Clock M  
U.S. PUBLIC LAND SURVEY MONUMENT RECORD  
REGISTER OF DEEDS

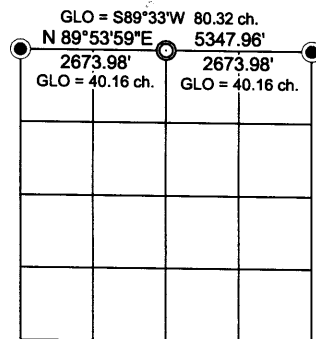
Note: This form is intended and designed to fulfill all requirements of the Wisconsin Administrative Code, Chapter A-E 7.08 U.S. Public Land Monument Record (3)(a)(b)(c)(d)(e)(f)(g)(h)(i). An additional sheet may be added if necessary to conform with said requirements.

(a) CORNER LOCATION:

North 1/4 corner of Section 9  
Township 38 North  
Range 4 East  
Town of Minocqua  
County of Oneida

O. C. COORDINATES

North: 225309.5928  
East: 115388.7991  
Control Station: O. C. 207  
Latitude: 45°49' 03.59887" N  
Longitude: 89°56' 30.36164" W  
Datum: NAD-83 (91)  
Method: Direct RTK - GPS



Bearings Oneida County Grid,  
based upon GPS data

(b) HISTORY OF ORIGINAL CORNER ESTABLISHMENT

Original Surveyor: Alex Anderson, Deputy Surveyor  
Date of Survey: Commenced April 26th, 1865  
Completed May 8th, 1865

Original B.T.'s: Spruce 3" N33°E, 7 links (4.62 feet)  
Tamarac 6" S51°E, 58 links (38.28 feet)

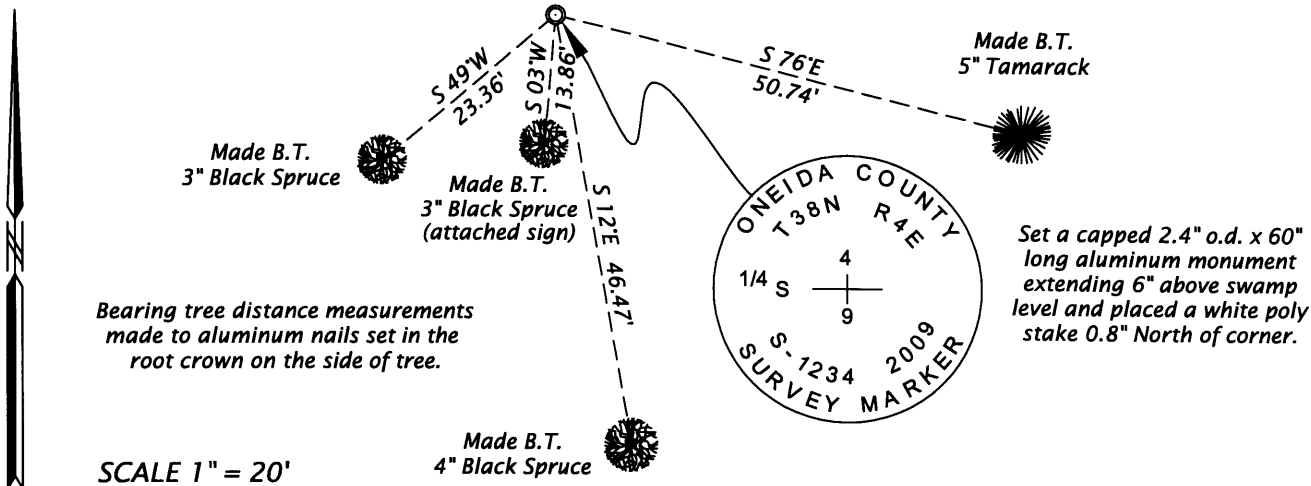
(f)(g)(h) DESCRIPTION OF MONUMENT FOUND AT THIS CORNER AND IF IT WAS ACCEPTED, STATE ALL EVIDENCE (MATERIAL, TESTIMONIAL, OCCUPATIONAL, PLATS, RECORDS, OTHER MONUMENTS) USED AS A BASIS FOR ESTABLISHING LOCATION. IF NOT ACCEPTED OF IF NOTHING WAS FOUND, STATE EVIDENCE USED AS BASIS FOR ESTABLISHING LOCATION. IF REESTABLISHED THROUGH LOST CORNER PROPORTIONATE METHODS, INDICATE ALL MONUMENTS, DISTANCES AND DIRECTIONS USED TO ESTABLISH. INDICATE TYPE OF MONUMENT AND SIGN POST FOUND OR SET.

November 9th, 1937 - Ray H. Hall, Surveyor - CC Camp 75-S Book 9, pages 6 and 7 - Measure west on random picket line from Original Corner 2-3-10-11 @ 119.80 chains find no sign of 1/4 S.

June 6th, 2009 - James D. Rein, Professional Land Surveyor No. 1234 - After conducting a thorough search, I am unable to recover any evidence of the corner. I thus determine the corner is lost and reestablish its position by single proportionate measurement between the section corners as shown above in the section diagram. I set a capped 2.4" o.d. x 60" long aluminum monument extending 6 inches above ground level in a semi open Black Spruce and Tamarack swamp. I also place a white poly stake 1/2 foot northeast of the corner and made bearing trees scribed "BT" as shown below in the plan view.

(c)(d)(e) PLAN VIEW OF CORNER WITH TIES TO AT LEAST 4 WITNESS MONUMENTS. IF IN DISAGREEMENT WITH PREVIOUSLY ESTABLISHED CORNER, SHOW THE DISTANCE BETWEEN THE TWO CORNERS AND ALSO INDICATE THE TIES TO THE DISPUTED CORNER.

Bearings Magnetic  
Dec. 0°



(i) I, JAMES D. REIN, PROFESSIONAL LAND SURVEYOR NO. S-1234 HEREBY CERTIFY THAT THE CORNER LOCATION ON THIS RECORD WAS DETERMINED BY ME OR UNDER MY DIRECTION AND CONTROL AND THAT THIS U.S. PUBLIC LAND SURVEY MONUMENT RECORD IS CORRECT AND COMPLETE TO THE BEST OF MY KNOWLEDGE AND BELIEF.

*[Signature]*  
SIGNATURE  
June 9th, 2009  
DATE 3804040020

