

At            O'Clock            M

**THOMAS H. LEIGHTON**  
U.S. PUBLIC LAND SURVEY MONUMENT RECORD

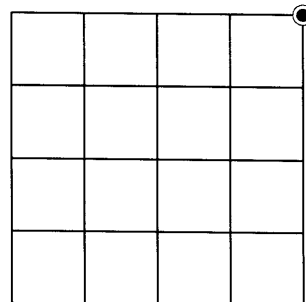
Note: This form is intended and designed to fulfill all requirements of the Wisconsin Administrative Code, Chapter A-E 7.08 U.S. Public Land Monument Record (3)(a)(b)(c)(d)(e)(f)(g)(h)(i). An additional sheet may be added if necessary to conform with said requirements.

(a) CORNER LOCATION:

Northeast corner of Section 8  
Township 38 North  
Range 4 East  
Town of Minocqua  
County of Oneida

O. C. COORDINATES

North: 225304.924  
East: 112714.825  
Control Station: O. C. 207  
Latitude: 45°49'03.59887" N  
Longitude: 89°56'30.36164" W  
Datum: NAD-83 (91)  
Method: Direct RTK - GPS



(b) HISTORY OF ORIGINAL CORNER ESTABLISHMENT

Original Surveyor: Alex Anderson, Deputy Surveyor  
Date of Survey: Commenced April 26th, 1865  
Completed May 8th, 1865

Original B.T.'s: Tamarac 6" S41°W, 17 links (11.22 feet)  
Tamarac 6" N40°W, 24 links (15.84 feet)

SECTION 8

(f)(g)(h) DESCRIPTION OF MONUMENT FOUND AT THIS CORNER AND IF IT WAS ACCEPTED, STATE ALL EVIDENCE (MATERIAL, TESTIMONIAL, OCCUPATIONAL, PLATS, RECORDS, OTHER MONUMENTS) USED AS A BASIS FOR ESTABLISHING LOCATION. IF NOT ACCEPTED OF IF NOTHING WAS FOUND, STATE EVIDENCE USED AS BASIS FOR ESTABLISHING LOCATION. IF REESTABLISHED THROUGH LOST CORNER PROPORTIONATE METHODS, INDICATE ALL MONUMENTS, DISTANCES AND DIRECTIONS USED TO ESTABLISH. INDICATE TYPE OF MONUMENT AND SIGN POST FOUND OR SET.

October 8th, 1937 - Ray H. Hall, Surveyor - CC Camp 75-S Book 8, page 58 - Set new post in place of old one found for cor. Secs. 4-5-8-9 agreeing with Orig. SW B.T. marks OK. New Var. 0° {Tam. 3" N 46°E, .512 ch. (33.79 feet), Tam. 3" S 82°E, 1.496 ch. (98.74 feet)} in open swamp.

February 4, 1989 - Nekoosa Papers Inc. map by W. H. Stuth, for surveys performed in Section 8 in 1961 and 1979 - legends corner "BY OTHERS".

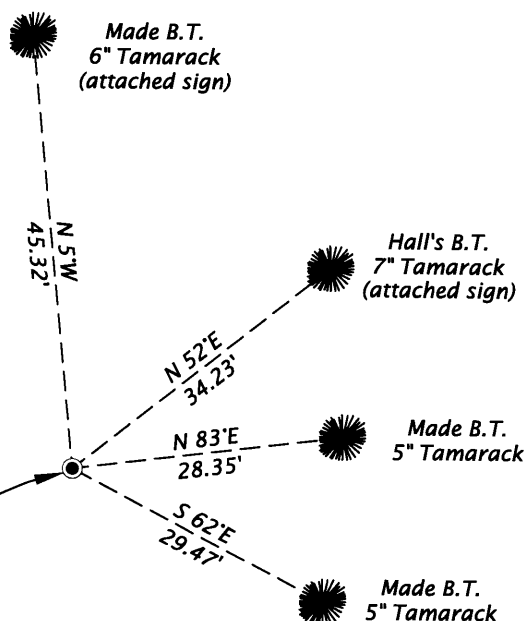
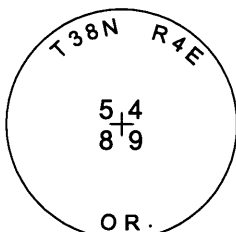
April 29, 2009 - James D. Rein, RLS #1234 - Recovered brass capped 2.0" o.d. iron pipe flush in semi-open leather leaf swamp, referenced by Hall's northeast bearing tree. Set a white poly stake 1.35 feet from the corner monument and made ties to new bearing trees scribed "BT" as shown in the plan view.

(c)(d)(e) PLAN VIEW OF CORNER WITH TIES TO AT LEAST 4 WITNESS MONUMENTS. IF IN DISAGREEMENT WITH PREVIOUSLY ESTABLISHED CORNER, SHOW THE DISTANCE AND DIRECTIONS OF THE TWO CORNERS AND ALSO INDICATE THE TIES TO THE DISPUTED CORNER.

Bearings Magnetic  
Dec. 0°



Recovered brass capped 2.0" o.d. iron pipe flush in semi open leather leaf swamp. Set a white poly stake 1.35 feet north of the corner monument. Corner is referenced by Hall's bearing tree and new bearing trees as shown in plan. Bearing tree distance measurements made to aluminum nails set in the root crown on the side of the tree.



SCALE 1" = 20'

(i) I, JAMES D. REIN, REGISTERED LAND SURVEYOR NO. S-1234 HEREBY CERTIFY THAT THE CORNER LOCATION ON THIS RECORD WAS DETERMINED BY ME OR UNDER MY DIRECTION AND CONTROL AND THAT THIS U.S. PUBLIC LAND SURVEY MONUMENT RECORD IS CORRECT AND COMPLETE TO THE BEST OF MY KNOWLEDGE AND BELIEF.

*James D. Rein*  
SIGNATURE

May 5, 2009  
DATE

