

At O'Clock M
U.S. PUBLIC LAND SURVEY MONUMENT RECORD
REGISTER OF DEEDS

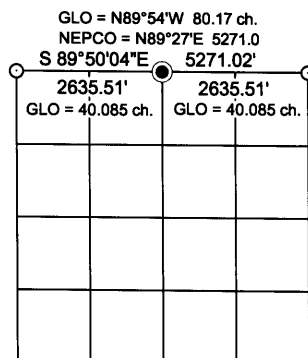
Note: This form is intended and designed to fulfill all requirements of the Wisconsin Administrative Code, Chapter A-E 7.08 U.S. Public Land Monument Record (3)(a)(b)(c)(d)(e)(f)(g)(h)(i). An additional sheet may be added if necessary to conform with said requirements.

(a) CORNER LOCATION:

North quarter corner of Section 8
Township 38 North
Range 4 East
Town of Minocqua
County of Oneida

O. C. COORDINATES

North: 225312.5235
East: 110079.3235
Control Station: O. C. 207
Latitude: 45°49' 03.59887" N
Longitude: 89°56' 30.36164" W
Datum: NAD-83 (91)
Method: Direct RTK - GPS



SECTION 8

(b) HISTORY OF ORIGINAL CORNER ESTABLISHMENT

Original Surveyor: Alex Anderson, Deputy Surveyor
Date of Survey: Commenced April 26th, 1865
Completed May 8th, 1865

Original B.T.'s: Tamarac 6" N27°E, 24 links (15.84 feet)
Tamarac 4" S64°E, 51 links (33.66 feet)

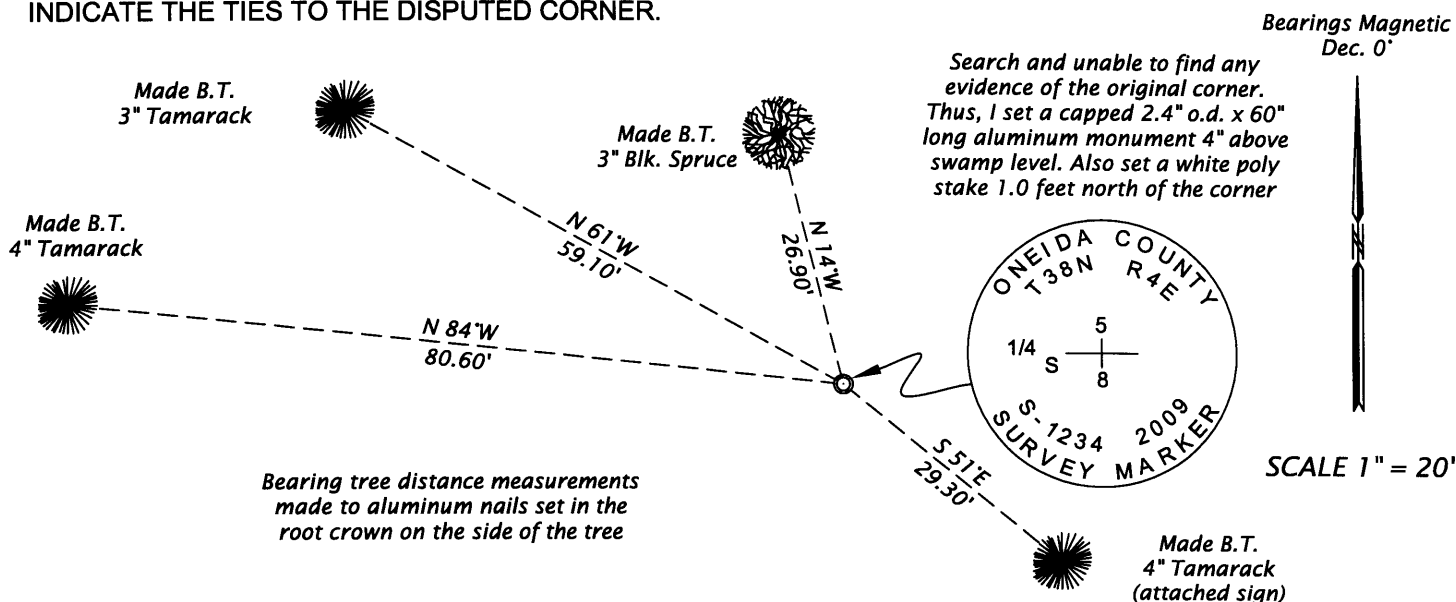
(f)(g)(h) DESCRIPTION OF MONUMENT FOUND AT THIS CORNER AND IF IT WAS ACCEPTED, STATE ALL EVIDENCE (MATERIAL, TESTIMONIAL, OCCUPATIONAL, PLATS, RECORDS, OTHER MONUMENTS) USED AS A BASIS FOR ESTABLISHING LOCATION. IF NOT ACCEPTED OF IF NOTHING WAS FOUND, STATE EVIDENCE USED AS BASIS FOR ESTABLISHING LOCATION. IF REESTABLISHED THROUGH LOST CORNER PROPORTIONATE METHODS, INDICATE ALL MONUMENTS, DISTANCES AND DIRECTIONS USED TO ESTABLISH. INDICATE TYPE OF MONUMENT AND SIGN POST FOUND OR SET.

November 9th, 1937 - Ray H. Hall, Surveyor - CC Camp 75S Book 9, page 8 - @ 40.08 1/2 chains west of orig. corner to Sections 4-5-8-9, could not find 1/4 S - all open bog - fired some time ?

February 4, 1989 - Nekoosa Papers Inc. map by W. H. Stuth, representing surveys performed in Section 8 in 1961 and 1979, makes no indication of any corner monument either recovered, or set.

May 9th, 2009 - James D. Rein, PLS #1234 - Search and unable to recover any evidence of the original corner, or its reestablishment. Thus, I set a capped 2.4" o.d. x 60" long aluminum monument at a single proportionate position between the recovered original section corners as shown above in diagram. I also set a white poly stake 1.0 feet north of the corner monument and make bearing trees, marked "BT", as shown below in the plan.

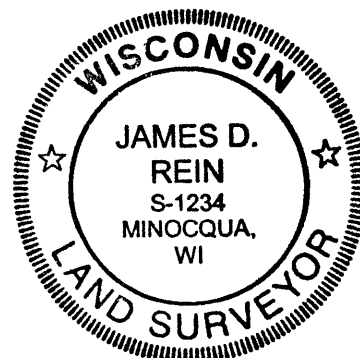
(c)(d)(e) PLAN VIEW OF CORNER WITH TIES TO AT LEAST 4 WITNESS MONUMENTS. IF IN DISAGREEMENT WITH PREVIOUSLY ESTABLISHED CORNER, SHOW THE DISTANCE BETWEEN THE TWO CORNERS AND ALSO INDICATE THE TIES TO THE DISPUTED CORNER.



(i) I, JAMES D. REIN, REGISTERED LAND SURVEYOR NO. S-1234 HEREBY CERTIFY THAT THE CORNER LOCATION ON THIS RECORD WAS DETERMINED BY ME OR UNDER MY DIRECTION AND CONTROL AND THAT THIS U.S. PUBLIC LAND SURVEY MONUMENT RECORD IS CORRECT AND COMPLETE TO THE BEST OF MY KNOWLEDGE AND BELIEF.

[Handwritten Signature]
SIGNATURE

May 12th, 2009
DATE *3804050020*



INDEX NO. E-7