

At 11 O'Clock M  
**THOMAS H. LEIGHTON**  
U.S. PUBLIC LAND SURVEY MONUMENT RECORD

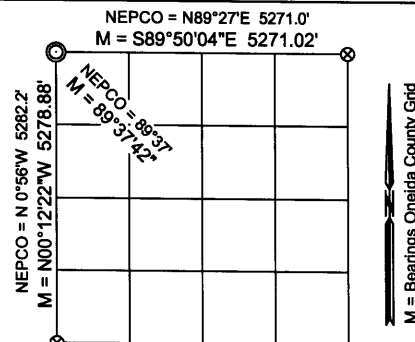
Note: This form is intended and designed to fulfill all requirements of the Wisconsin Administrative Code, Chapter A-E 7.08 U.S. Public Land Monument Record (3)(a)(b)(c)(d)(e)(f)(g)(h)(i). An additional sheet may be added if necessary to conform with said requirements.

(a) CORNER LOCATION:

Northwest corner of Section 8  
Township 38 North  
Range 4 East  
Town of Minocqua  
County of Oneida

O. C. COORDINATES

North: 225320.146  
East: 107443.831  
Control Station: O. C. 207  
Latitude: 45°49'03.59887" N  
Longitude: 89°56'30.36164" W  
Datum: NAD - 83 (91)  
Method: Offset RTK - GPS



(b) HISTORY OF ORIGINAL CORNER ESTABLISHMENT

Original Surveyor: Alex Anderson, Deputy Surveyor  
Date of Survey: Commenced April 26th, 1865  
Completed May 8th, 1865

Original B.T.'s: Hemlock 8" S58°E, 8 links (5.28 feet)  
Hemlock 8" N41°W, 52 links (34.32 feet)

SECTION 8

(f)(g)(h) DESCRIPTION OF MONUMENT FOUND AT THIS CORNER AND IF IT WAS ACCEPTED, STATE ALL EVIDENCE (MATERIAL, TESTIMONIAL, OCCUPATIONAL, PLATS, RECORDS, OTHER MONUMENTS) USED AS A BASIS FOR ESTABLISHING LOCATION. IF NOT ACCEPTED OF IF NOTHING WAS FOUND, STATE EVIDENCE USED AS BASIS FOR ESTABLISHING LOCATION. IF REESTABLISHED THROUGH LOST CORNER PROPORTIONATE METHODS, INDICATE ALL MONUMENTS, DISTANCES AND DIRECTIONS USED TO ESTABLISH. INDICATE TYPE OF MONUMENT AND SIGN POST FOUND OR SET.

November 12th, 1937 - Ray H. Hall, Surveyor - CC Camp 75S Book 8, page 10 - 59.89 chains + 20. \_\_\_ fall S. of orig. cor. set location as near as possible from one orig. B.T. (still alive).

February 4, 1989 - Nekoosa Papers Inc. map by W. H. Stuth, for surveys performed in Section 8 in 1961 and 1979 - legends corner "BY OTHERS" and provides bearing and distance ties to the southwest and northeast corners of section as shown above in location diagram.

May 2nd, 2009 - James D. Rein, RLS #1234 - Recovered old partially decayed 4" square cedar post referenced by location poster on 9" dia. Maple stub with many witnesses, including I. Hassler in 1957. The site shows extensive evidence of windstorm and logging activity. This position is harmonious with the Nekoosa Papers Inc. record ties to the northeast and southwest section corners. I accept this position as a perpetuation of the original corner location and replace the old post with a capped 2.4" o.d. x 30" long flange bottom aluminum monument and make new bearing tree reference ties as shown in the plan view. The corner is located 28 feet west of the centerline of a north - south logging road.

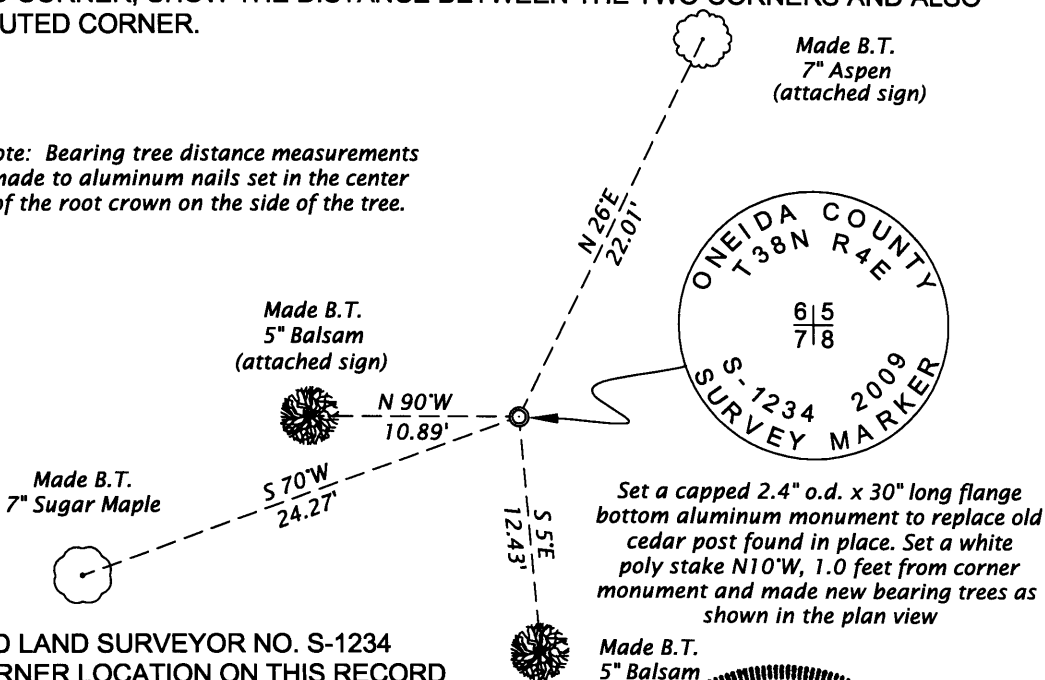
(c)(d)(e) PLAN VIEW OF CORNER WITH TIES TO AT LEAST 4 WITNESS MONUMENTS. IF IN DISAGREEMENT WITH PREVIOUSLY ESTABLISHED CORNER, SHOW THE DISTANCE BETWEEN THE TWO CORNERS AND ALSO INDICATE THE TIES TO THE DISPUTED CORNER.

Bearings Magnetic  
Dec. 0'



SCALE 1" = 10'

Note: Bearing tree distance measurements made to aluminum nails set in the center of the root crown on the side of the tree.



(i) I, JAMES D. REIN, REGISTERED LAND SURVEYOR NO. S-1234 HEREBY CERTIFY THAT THE CORNER LOCATION ON THIS RECORD WAS DETERMINED BY ME OR UNDER MY DIRECTION AND CONTROL AND THAT THIS U.S. PUBLIC LAND SURVEY MONUMENT RECORD IS CORRECT AND COMPLETE TO THE BEST OF MY KNOWLEDGE AND BELIEF.

SIGNATURE

DATE May 5, 2009  
3804060000

