

At O'Clock M
U.S. PUBLIC LAND SURVEY MONUMENT RECORD
REGISTER OF DEEDS

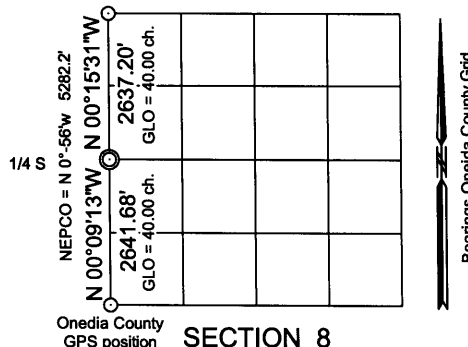
Note: This form is intended and designed to fulfill all requirements of the Wisconsin Administrative Code, Chapter A-E 7.08 U.S. Public Land Monument Record (3)(a)(b)(c)(d)(e)(f)(g)(h)(i). An additional sheet may be added if necessary to conform with said requirements.

(a) CORNER LOCATION:

West quarter corner of Section 8
Township 38 North
Range 4 East
Town of Minocqua
County of Oneida

O. C. COORDINATES

North: 222682.9707
East: 107455.7331
Control Station: O.C. 207
Latitude: 45°49'03.59887" N
Longitude: 89°56'30.36164" W
Datum: NAD-83 (91)
Datum: Direct RTK - GPS



(b) HISTORY OF ORIGINAL CORNER ESTABLISHMENT

Original Surveyor: Alex. Anderson, Deputy Surveyor
Date of Survey: Commenced April 26th, 1865
Completed May 8th, 1865

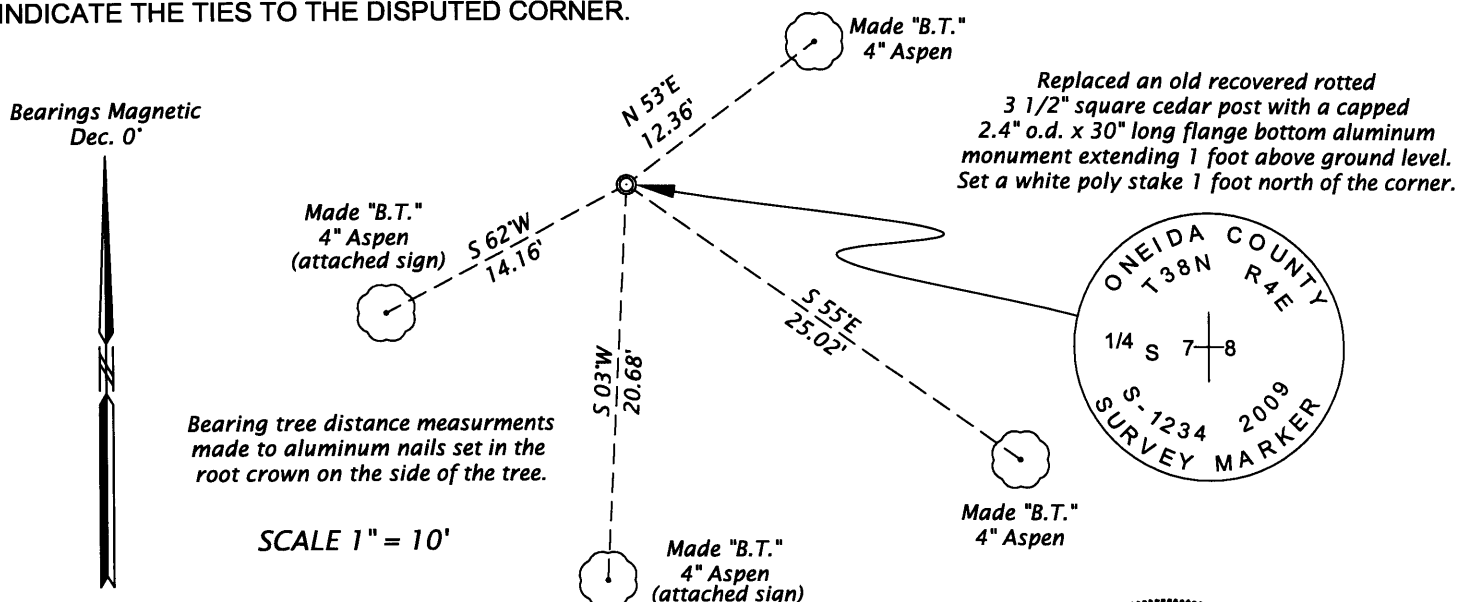
Original B.T.s: Hemlock 10" N3°W, 37 links (24.42 feet)
Hemlock 12" N75°W, 27 links (17.82 feet)

(f)(g)(h) DESCRIPTION OF MONUMENT FOUND AT THIS CORNER AND IF IT WAS ACCEPTED, STATE ALL EVIDENCE (MATERIAL, TESTIMONIAL, OCCUPATIONAL, PLATS, RECORDS, OTHER MONUMENTS) USED AS A BASIS FOR ESTABLISHING LOCATION. IF NOT ACCEPTED OF IF NOTHING WAS FOUND, STATE EVIDENCE USED AS BASIS FOR ESTABLISHING LOCATION. IF REESTABLISHED THROUGH LOST CORNER PROPORTIONATE METHODS, INDICATE ALL MONUMENTS, DISTANCES AND DIRECTIONS USED TO ESTABLISH. INDICATE TYPE OF MONUMENT AND SIGN POST FOUND OR SET.

February 4, 1989 - Nekoosa Papers Inc. map by W. H. Stuth, representing surveys performed in Section 8 in 1961 and 1979 note "Not known if old NEPCO Cor., or if reset by Hassler before O.I. used it in 1969 Section 7 survey.

May 9th, 2009 - James D. Rein, PLS #1234 - Recovered old rotted 3 1/2" square cedar post very close to the single proportionate position between the section corners. Although there is no evidence of the original corner I accept the post as marking the corner position because it has been set in good faith using property survey methods. I replace the post with a capped 2.4" o.d. x 30" long flange bottom aluminum monument extending 1 foot above ground level. I also placed a white poly stake 1 foot north of the corner and made new bearing trees, marked "BT", as shown below in the plan. The corner is located in a 10 to 15 year old slash area.

(c)(d)(e) PLAN VIEW OF CORNER WITH TIES TO AT LEAST 4 WITNESS MONUMENTS. IF IN DISAGREEMENT WITH PREVIOUSLY ESTABLISHED CORNER, SHOW THE DISTANCE BETWEEN THE TWO CORNERS AND ALSO INDICATE THE TIES TO THE DISPUTED CORNER.



(i) I, JAMES D. REIN, REGISTERED LAND SURVEYOR NO. S-1234 HEREBY CERTIFY THAT THE CORNER LOCATION ON THIS RECORD WAS DETERMINED BY ME OR UNDER MY DIRECTION AND CONTROL AND THAT THIS U.S. PUBLIC LAND SURVEY MONUMENT RECORD IS CORRECT AND COMPLETE TO THE BEST OF MY KNOWLEDGE AND BELIEF.

SIGNATURE

DATE May 12th 2009 3804072000

