

U.S. PUBLIC LAND SURVEY MONUMENT RECORD

REGISTER OF DEEDS OFFICE
ONEIDA COUNTY
FILED

Note: This form is intended and designed to fulfill all requirements of the Wisconsin Administrative Code, Chapter A-E 7.08 U.S. Public Land Monument Record (3)(a)(b)(c)(d)(e)(f)(g)(h)(i). An additional sheet may be added if necessary to conform with said requirements.

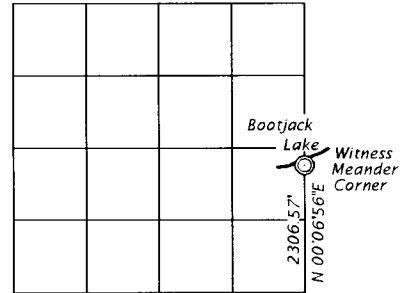
FEB 23 2018

KYLE J. FRANSON
REGISTER OF DEEDS

(a) CORNER LOCATION: WISCRS - Oneida County
 Witness S. Meander Corner of Section 8 North: 222264.228
 Township 38 North East: 112737.196
 Range 4 East Datum: NAD 83 (2011)
 Town of Minocqua GNSS Method: RTK offset traverse
 County of Oneida GNSS Control: WISCORS VRS

(RECORDING AREA)

SECTION 8



(b) HISTORY OF ORIGINAL CORNER ESTABLISHMENT

Original Surveyor: Alexander Anderson
 Date of Survey: Commenced: April 26, 1865
 Completed: May 8, 1865
 Original B.T.'S: Tamarack, 14", N 55°E, 11 lks.
 Birch, 9", S 5°E, 7 lks.

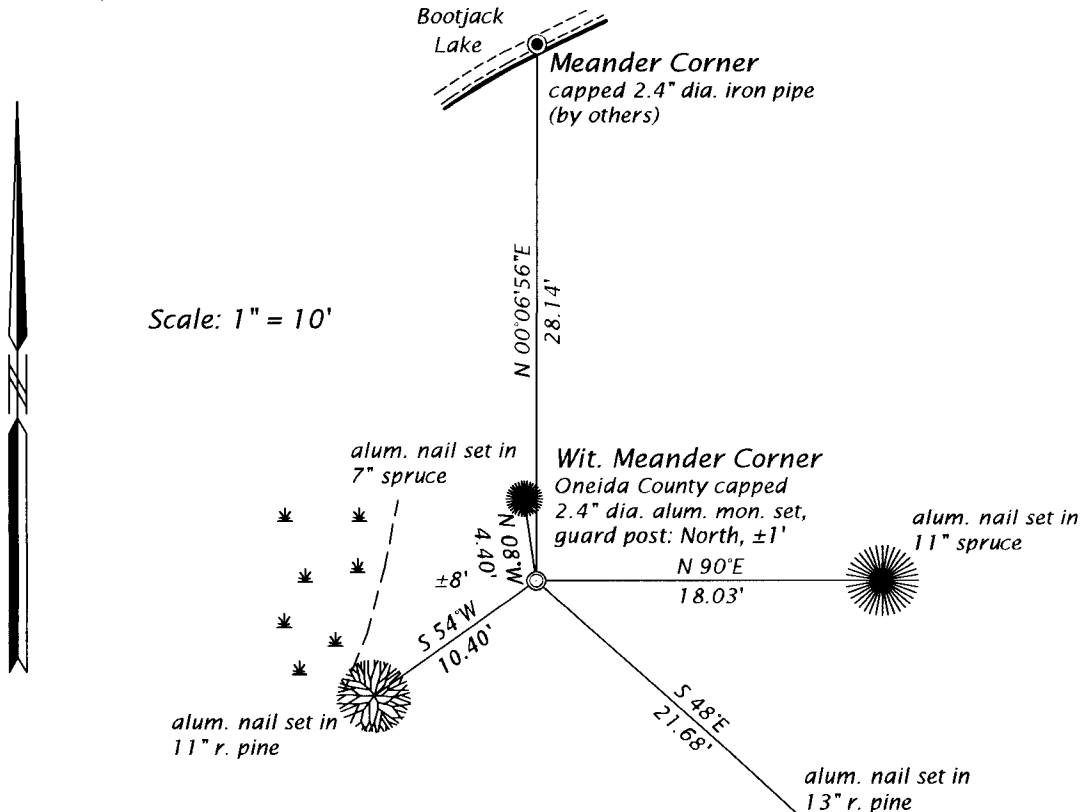
(f)(g)(h) DESCRIPTION OF MONUMENT FOUND AT THIS CORNER AND IF IT WAS ACCEPTED, STATE ALL EVIDENCE (MATERIAL, TESTIMONIAL, OCCUPATIONAL, PLATS, RECORD, OTHER MONUMENTS) USED AS A BASIS FOR ESTABLISHING LOCATION. IF NOT ACCEPTED OR IF NOTHING WAS FOUND, STATE EVIDENCE USED AS BASIS FOR ESTABLISHING LOCATION. IF REESTABLISHED THROUGH LOST CORNER PROPORTIONATE METHODS, INDICATE ALL MONUMENTS, DISTANCES AND DIRECTIONS USED TO ESTABLISH. INDICATE TYPE OF MONUMENT AND SIGN POST FOUND OR SET.

1960's ? - William S. Cameron, RLS #112, undated map of survey with surveyor's affidavit, shows south meander corner monumented by a "2" iron pipe" on a straight line from the South Sixteenth Corner to the meander corner on northerly shore of Bootjack Lake at a distance of 999.50 feet from said South Sixteenth Corner.

February 4, 1989, W. H. Stuth, RLS surveyor for Nekoosa Papers, Inc. map in NEPCO Book 2, page 9, notes surveys in Sections 8 & 9, by Ivan Hassler and Bill Cameron in 1961 & 1979, describes corner monument by others with calls identical to those shown on the Cameron map.

July 24, 2017 - James D. Rein, PLS No. 1234, we recovered a capped 2.4" o.d. iron pipe in Bootjack Lake harmonious with Cameron map. I accept the iron pipe as being a re-establishment of the lost corner and perpetuate the location with a witness corner and ties as shown below.

(c)(d)(e) PLAN VIEW OF CORNER WITH TIES TO AT LEAST 4 WITNESS MONUMENTS. IF IN DISAGREEMENT WITH PREVIOUSLY ESTABLISHED CORNER, SHOW THE DISTANCE BETWEEN THE TWO CORNERS AND ALSO INDICATE THE TIES TO THE DISPUTED CORNER.



(i) I, JAMES D. REIN, PROFESSIONAL LAND SURVEYOR NO. S-1234 HEREBY CERTIFY THAT THE CORNER LOCATION ON THIS RECORD WAS DETERMINED BY ME OR UNDER MY DIRECTION AND CONTROL AND THAT THIS U.S. PUBLIC LAND SURVEY MONUMENT RECORD IS CORRECT AND COMPLETE TO THE BEST OF MY KNOWLEDGE AND BELIEF

James D. Rein
 SIGNATURE

2-20-18
 DATE



INDEX NO. G-H-9
 3804081800