

At O'Clock M

THOMAS H. LEIGHTON  
U.S. PUBLIC LAND SURVEY MONUMENT RECORD

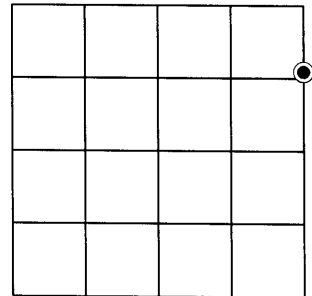
Note: This form is intended and designed to fulfill all requirements of the Wisconsin Administrative Code, Chapter A-E 7.08 U.S. Public Land Monument Record (3)(a)(b)(c)(d)(e)(f)(g)(h)(i). An additional sheet may be added if necessary to conform with said requirements.

(a) CORNER LOCATION:

North M.C. on east line of Section 8  
Township 38 North  
Range 4 East  
Town of Minocqua  
County of Oneida

O. C. COORDINATES

North: 223987.381  
East: 112740.265  
Control Station: O.C. 207  
Latitude: 45°49'03.59887" N  
Longitude: 89°56'30.36164" W  
Datum: NAD-83 (91)  
Method: Direct RTK - GPS



Meander Corner

(b) HISTORY OF ORIGINAL CORNER ESTABLISHMENT

SECTION 8

Original Surveyor: Alex Anderson, Deputy Surveyor  
Date of Survey: Commenced April 26th, 1865  
Completed May 8th, 1865

Original B.T.'s: W. Pine 6", West, 27 links (17.82 feet)  
Hemlock 8" N89°E, 27 links (17.82 feet)

Note: Tamarac 10" was original corner monument

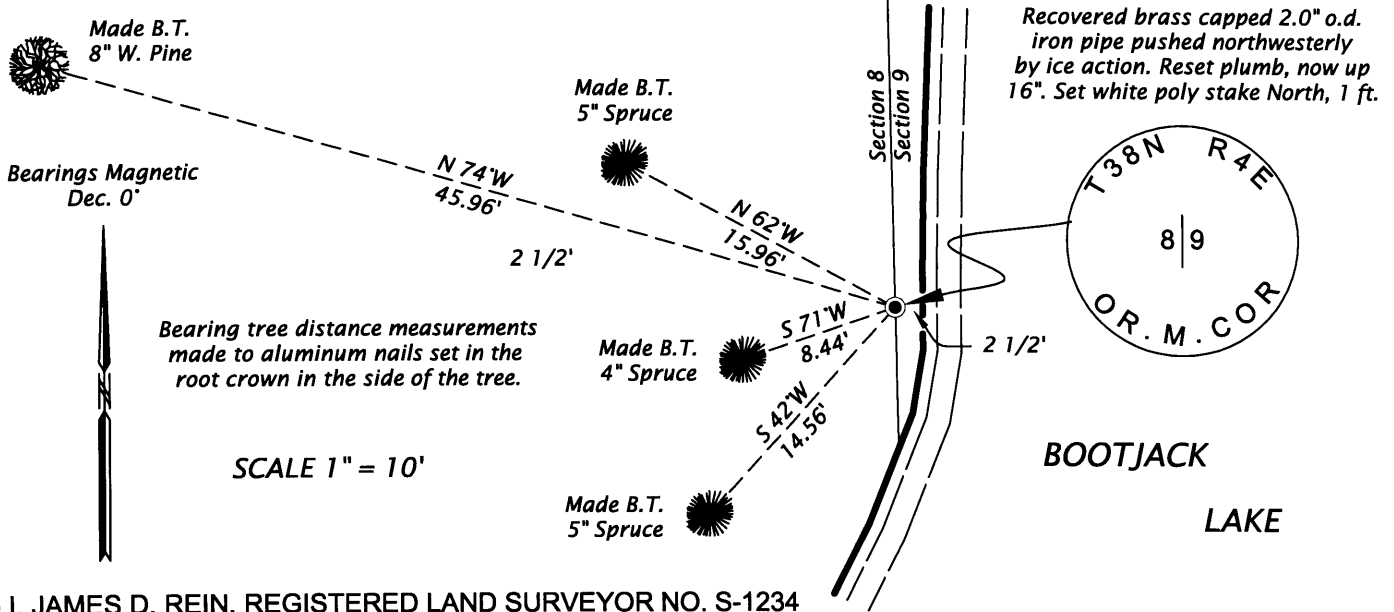
(f)(g)(h) DESCRIPTION OF MONUMENT FOUND AT THIS CORNER AND IF IT WAS ACCEPTED, STATE ALL EVIDENCE (MATERIAL, TESTIMONIAL, OCCUPATIONAL, PLATS, RECORDS, OTHER MONUMENTS) USED AS A BASIS FOR ESTABLISHING LOCATION. IF NOT ACCEPTED OF IF NOTHING WAS FOUND, STATE EVIDENCE USED AS BASIS FOR ESTABLISHING LOCATION. IF REESTABLISHED THROUGH LOST CORNER PROPORTIONATE METHODS, INDICATE ALL MONUMENTS, DISTANCES AND DIRECTIONS USED TO ESTABLISH. INDICATE TYPE OF MONUMENT AND SIGN POST FOUND OR SET.

October 16, 1937 - Ray H. Hall, Surveyor - CC Camp 75-S Book 8, page 58 - Set post for Orig. M.C. North shore Bootjack Lake between Secs. 8 & 9. Two White Pines 12", one down, bear perfect boxings - no scribe marks. One brs. N24°W, .115 ch. from there a 10" Hem. grew where facings point. So we set post as near stp. as boulders permit. Var. 0° { Orig. Pine N2°W, .095 ch. (6.27 feet), Orig. Pine S87°E, .036 ch. (2.38 feet), New W. Birch 3" N21°W, .19 ch. (12.54 feet), New W. Birch 4" S35°W, .127 ch. (8.38 feet)}.

February 4, 1989 - Nekoosa Papers Inc. map by W. H. Stuth, for surveys performed in Section 8 in 1961 and 1979 - legends corner "BY OTHERS" and shows corner common to Sections 4-5-8-9 bearing N 2°05'W, 1319.8 feet.

April 29, 2009 - James D. Rein, RLS #1234 - Recover a brass capped 2.0" o.d. iron pipe leaning northwesterly by apparent ice action. I reset the monument plumb, now extending 16" above ground level. Corner is located on the easterly side of a stony upland island in large swamp as described in Hall's notes. A decayed stump mass bears N 2°W, 6.3 feet and an eroded 14" dia. stump Pine ? bears East, 3 feet. I set a white poly stake 1 foot north of corner monument and make new bearing trees scribed "BT", as shown in the plan view. The corner common to Sections 4-5-8-9 bears N 1°06'22"W (O.C. grid bearing), 1317.79 feet.

(c)(d)(e) PLAN VIEW OF CORNER WITH TIES TO AT LEAST 4 WITNESS MONUMENTS. IF IN DISAGREEMENT WITH PREVIOUSLY ESTABLISHED CORNER, SHOW THE DISTANCE BETWEEN THE TWO CORNERS AND ALSO INDICATE THE TIES TO THE DISPUTED CORNER.



Recovered brass capped 2.0" o.d. iron pipe pushed northwesterly by ice action. Reset plumb, now up 16". Set white poly stake North, 1 ft.

BOOTJACK LAKE

(i) I, JAMES D. REIN, REGISTERED LAND SURVEYOR NO. S-1234 HEREBY CERTIFY THAT THE CORNER LOCATION ON THIS RECORD WAS DETERMINED BY ME OR UNDER MY DIRECTION AND CONTROL AND THAT THIS U.S. PUBLIC LAND SURVEY MONUMENT RECORD IS CORRECT AND COMPLETE TO THE BEST OF MY KNOWLEDGE AND BELIEF.

SIGNATURE

DATE

May 5, 2009  
3804083100



INDEX NO. E/F-9