

U.S. PUBLIC LAND SURVEY MONUMENT RECORD

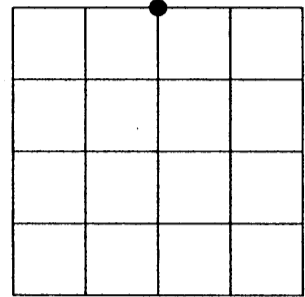
Note: This form is intended and designed to fulfill all requirements of the Wisconsin Administrative Code, Chapter A-E 7.08 U.S. Public Land Monument Record (3)(a)(b)(c)(d)(e)(f)(g)(h)(i). An additional sheet may be added if necessary to conform with said requirements.

(a) CORNER LOCATION:

north quarter corner of Section 15
 Township 38 North
 Range 4 East
 Town of Minocqua
 County of Oneida

COORDINATES

North:
 East:
 Control Station:
 Latitude:
 Longitude:
 Datum Method



SECTION 15

(b) HISTORY OF ORIGINAL CORNER ESTABLISHMENT

Original Surveyor: A. Anderson
 Date of Survey: Commenced April 1865
 Completed May 1865

Original B.T.'S
 Hemlock 10" dia., S35°E 18 links
 Hemlock 8" dia., N10°E 27 links

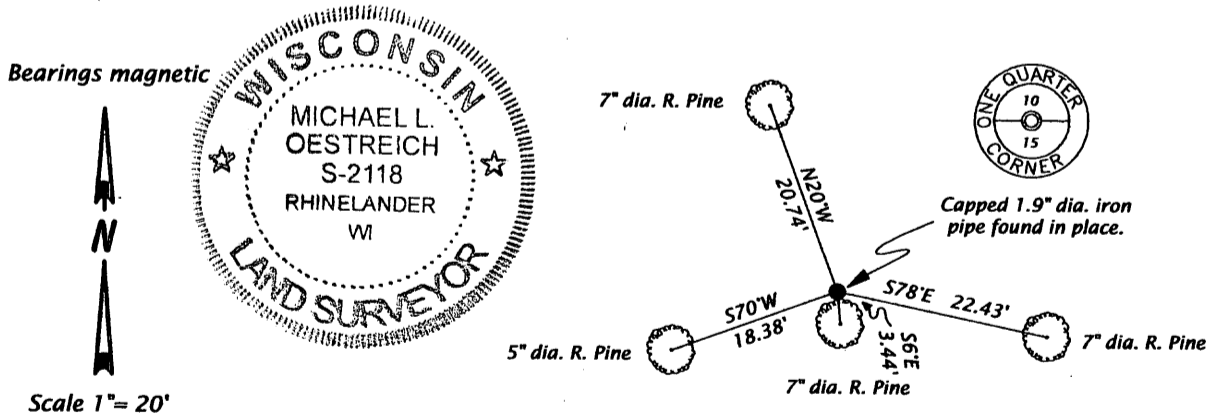
(f)(g)(h) DESCRIPTION OF MONUMENT FOUND AT THIS CORNER AND IF IT WAS ACCEPTED, STATE ALL EVIDENCE (MATERIAL, TESTIMONIAL, OCCUPATIONS, PLATS, RECORDS, OTHER MONUMENTS) USED AS A BASIS FOR ESTABLISHING LOCATION. IF NOT ACCEPTED OF IF NOTHING WAS FOUND, STATE EVIDENCE USED AS BASIS FOR ESTABLISHING LOCATION. IF REESTABLISHED THROUGH LOST CORNER PROPORTIONATE METHODS, INDICATE ALL MONUMENTS, DISTANCES AND DIRECTIONS USED TO ESTABLISH. INDICATE TYPE OF MONUMENT AND SIGN POST FOUND OR SET.

Original Surveyor: Alex Anderson, at 40 chains set 1/4 Section post.

William S. Cameron: on Map of survey dated March 1971, and filed in the Oneida County Land Information Office as Map No. B448 shows the quarter corner to be an iron pipe found in place. He notes two bearing trees: a 8" dia. W. Birch bearing S32W 50.5' distant and a 8" dia. W. Birch bearing N20W 35.6' distant.

Michael L. Oestreich: June 5th, 2006, recovered a capped 1.9" dia. iron pipe monument. The monument was lying flat, I then dug to find the base of monument, and reset the monument plumb. I set a 0.5" dia. x 24" long iron rod in the remains of a decaying White Stump which bears N18W 37.50'. I was unable to recover any evidence of the southwest bearing tree noted by Cameron. Also from the recovered monument a "T" fence post painted blue bears S10E +/- 70'. I made additional witness ties as shown in the plan below. The East Sixteenth Comer bears N85-45-02E 1349.27 feet from the recovered monument. Cameron's record bearing and distance is N85-35E 1350.4'.

(c)(d)(e) PLAN VIEW OF CORNER WITH TIES TO AT LEAST 4 WITNESS MONUMENTS. IF IN DISAGREEMENT WITH PREVIOUSLY ESTABLISHED CORNER, SHOW THE DISTANCE BETWEEN THE TWO CORNERS AND ALSO INDICATE THE TIES TO THE DISPUTED CORNER.



Distances measured to aluminum nail in side of tree.

(i) I, MICHAEL L. OESTREICH, REGISTERED LAND SURVEYOR NO. S-2118 HEREBY CERTIFY THAT THE CORNER LOCATION ON THIS RECORD WAS DETERMINED BY ME OR UNDER MY DIRECTION AND CONTROL AND THAT THIS U.S. PUBLIC LAND SURVEY MONUMENT RECORD IS CORRECT AND COMPLETE TO THE BEST OF MY KNOWLEDGE AND BELIEF.

Michael L. Oestreich 2-14-08
 SIGNATURE DATE

REGISTER OF DEEDS OFFICE
 ONEIDA COUNTY, WIS.

FILED
 APR 7 2008
 At _____ O'Clock _____ M
THOMAS H. LEIGHTON
 REGISTER OF DEEDS

3804100020

INDEX NO. 5-15