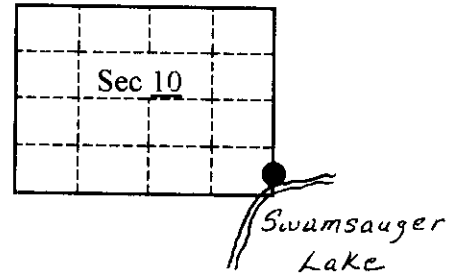


# U.S. PUBLIC LAND SURVEY MONUMENT RECORD

Note: This form is intended and designed to fulfill all requirements of Wisconsin Administrative Code, Chapter A-E 7.08 U.S. Land Survey Monument Record (3)(a)(b)(c)(d)(e)(f)(g)(h)(i). An additional sheet may be added if necessary to conform with said requirements.

(a) CORNER LOCATION: State Plane Coordinates  
 Meander Corner of Sec. 10 X \_\_\_\_\_  
 Township 38 North Y \_\_\_\_\_  
 Range 4 East Datum Base \_\_\_\_\_  
 Town Minocqua County of Oneida

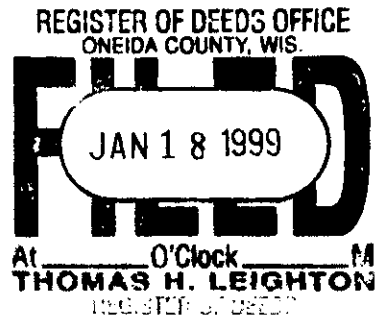
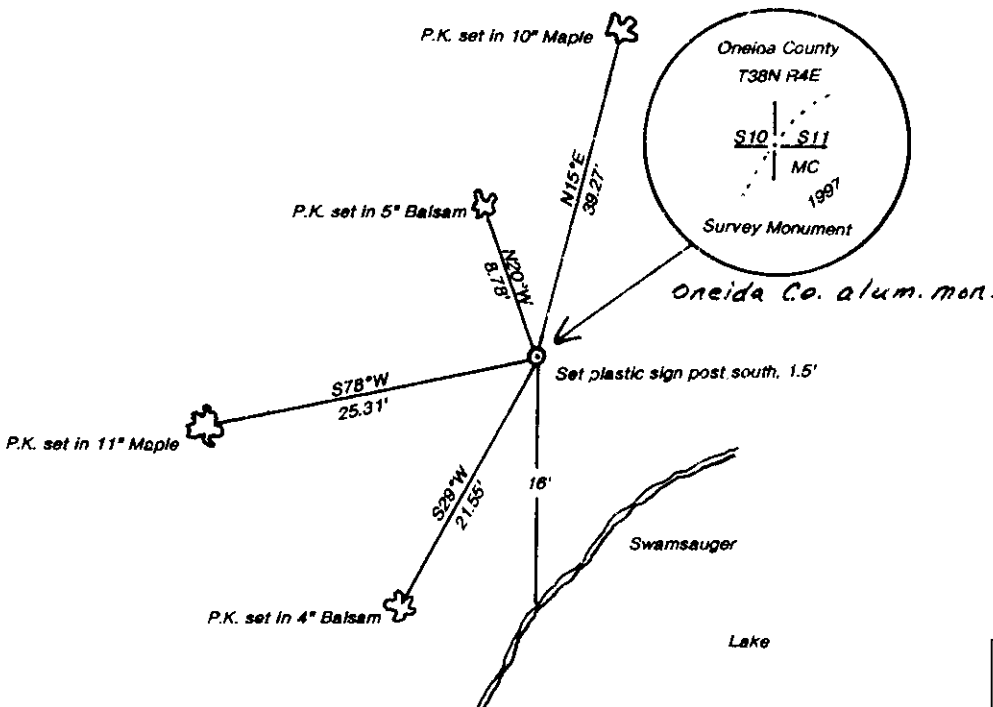


(b) HISTORY OF ORIGINAL CORNER ESTABLISHMENT Original B.T.'s  
 Original Surveyor: Alex Anderson White Pine 12", S30°E, 11 links  
 Date of Survey: Commenced April, 1865 White Pine 18", S65°W, 6 links  
 Completed May, 1865

(b)(f)(g)(h) Description of monument found at this corner and if it was accepted, state all evidence (material, testimonial, occupational, plats, records, other monuments) used as a basis for accepting. If not accepted or if nothing was found, state evidence used as basis for establishing location. If reestablished through lost corner proportionate methods, indicate all monuments, distances and directions used to establish. Indicate type of monument and sign post found or set.

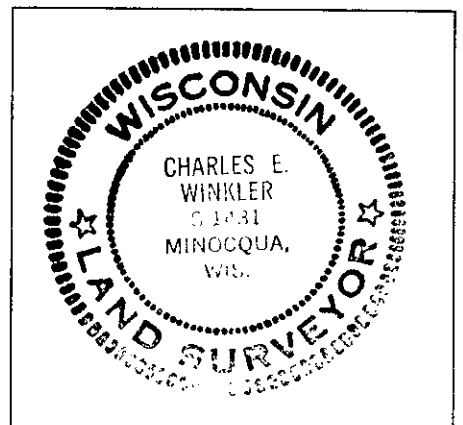
- 1865 - Alex Anderson set Meander Corner post.
- 1964 - Cameron (Northwoods Surveyors) field notes show a 1 1/2" iron pipe and scribed blue top witnessed by a 1 1/2" iron pipe (1/16th Corner) and scribed blue top, N1°35"W, 46.9'.
- 1997 - I recovered and accepted a 1 1/2" iron pipe witnessed by a 1 3/4" iron pipe (1/16th Corner) N2°W, 46.89'. I replaced the 1 1/2" iron pipe with an Oneida County aluminum monument and made four new B.T.'s.

(c)(d)(e) Plan view of corner with ties to at least 4 witness monuments. If in disagreement with previously established corner, show the distances between the two corners and also indicate the ties to the disputed.



(i) I, Charles E. Winkler, #S-1431 hereby certify that the corner location on this record was determined by me or under my direction and control and that this U.S. Public Land Survey Monument Record is correct and complete to the best of my knowledge and belief

Charles E. Winkler 1/13/1999  
 Signature Foltz & Associates, Inc. Date



Index No. H.S. 17

38.14 100400