

U.S. PUBLIC LAND SURVEY MONUMENT RECORD

Note: This form is intended and designed to fulfill all requirements of Wisconsin Administrative Code, Chapter A-E 7.08 U.S. Public Land Survey Monument Record (3) (a) (b) (c) (d) (e) (f) (g) (h) (i). An additional sheet may be added if necessary to conform with said requirements.

a) Corner Location:

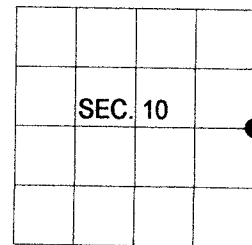
Oneida County Coordinates:

Datum: NAD 83 2011

N: 222622.36

E: 123413.05

1/4 Corner of Sections 10 & 11
Township 38 North, Range 4 East
Town of Minocqua,
Oneida County, Wisconsin



b) History of Original Corner establishment:

Original Surveyor: Alex Anderson

Date of Survey: Commenced: April, 1865

Completed: May, 1865

Original Accessories:

W.Pine 12" N 35° W, 39 lks.

Tamarack 12" S 73° E, 16 lks.

Creek 5 lks. wide North 1.5 chains

(b) (f) (g) (h) Description of monument found at this corner and if it was accepted, state all evidence (material, testimonial, occupational, plats, records, other monuments) used as a basis for accepting. If not accepted or if nothing was found, state evidence used as basis for establishing location. If re-established through lost corner proportionate methods, indicate all monuments, distances and directions used to establish. Indicate type of monument and sign post found or set.

1997 - Folz calculated a position by single proportion between the NE corner of Section 10 and the Calculated position of the SE corner (which is in the lake). This position is located approx. 40' North of the Creek called for by Anderson.

2020 - I searched record distance for the NE corner of section 10 and found no corner monument or accessories. I also searched Folz's position, north of the creek, and found no evidence there. Based on Anderson's call for the corner to be 1.5 chains South of the creek, I Set an Oneida County aluminum monument by record distance (40 Ch.) from NE corner of section 10.

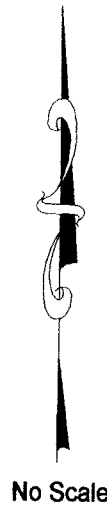
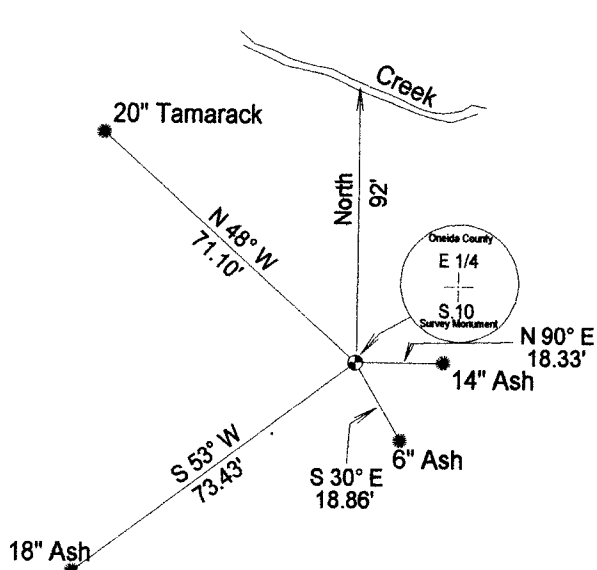
NE corner, found aluminum Mon., bears N 00°35'35" W, 2640.00'. Meander corner on the East line of Section 10 at the shore of Swamsauger Lk., found brass cap, bears S 00°35'35" E, 1126.28'
Made 4 new B.T.s.

REGISTER OF DEEDS OFFICE
ONEIDA COUNTY
WIS.

JUL 29 2020

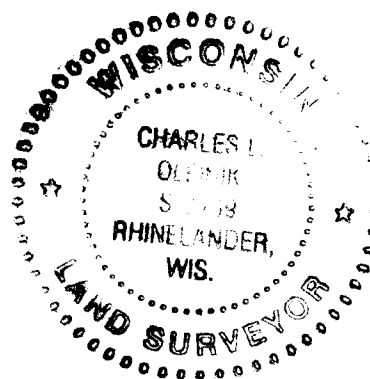
KYLE J. FRANSON
REGISTER OF DEEDS

(c) (d) (e) Plan view of corner with ties to at least 4 witness monuments. If in disagreement with previously established corner, show the distances between the two corners and also indicate the ties to the disputed.



(i) I Charles L. Oleinik, Professional Land Surveyor No: S-2439-8, hereby certify that the corner location on this record was determined by me or under my direction and control and that this U.S. Public Land Survey Monument Record is correct and complete to the best of my knowledge and belief.

Charles L. Oleinik 7-9-2020
Date



G-17

3804102000