

At O'Clock M
U.S. PUBLIC LAND SURVEY MONUMENT RECORD
REGISTER OF DEEDS

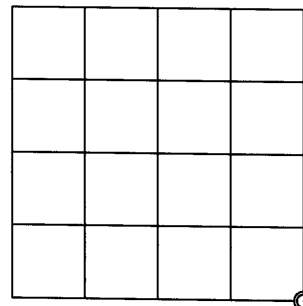
Note: This form is intended and designed to fulfill all requirements of the Wisconsin Administrative Code, Chapter A-E 7.08 U.S. Public Land Monument Record (3)(a)(b)(c)(d)(e)(f)(g)(h)(i). An additional sheet may be added if necessary to conform with said requirements.

(a) CORNER LOCATION:

Southeast corner of Section 11
Township 38 North
Range 4 East
Town of Minocqua
County of Oneida

O. C. COORDINATES

North:
East:
Control Station:
Latitude:
Longitude:
Datum Method



(b) HISTORY OF ORIGINAL CORNER ESTABLISHMENT

Original Surveyor: Alex Anderson, Deputy Surveyor
Date of Survey: Commenced April 26th, 1865
Completed May 8th, 1865

Original B.T.'s: Hemlock 10" N63°W, 24 links (15.84 feet)
Hemlock 12" N25°E, 29 links (19.14 feet)

SECTION 11

(f)(g)(h) DESCRIPTION OF MONUMENT FOUND AT THIS CORNER AND IF IT WAS ACCEPTED, STATE ALL EVIDENCE (MATERIAL, TESTIMONIAL, OCCUPATIONAL, PLATS, RECORDS, OTHER MONUMENTS) USED AS A BASIS FOR ESTABLISHING LOCATION. IF NOT ACCEPTED OF IF NOTHING WAS FOUND, STATE EVIDENCE USED AS BASIS FOR ESTABLISHING LOCATION. IF REESTABLISHED THROUGH LOST CORNER PROPORTIONATE METHODS, INDICATE ALL MONUMENTS, DISTANCES AND DIRECTIONS USED TO ESTABLISH. INDICATE TYPE OF MONUMENT AND SIGN POST FOUND OR SET.

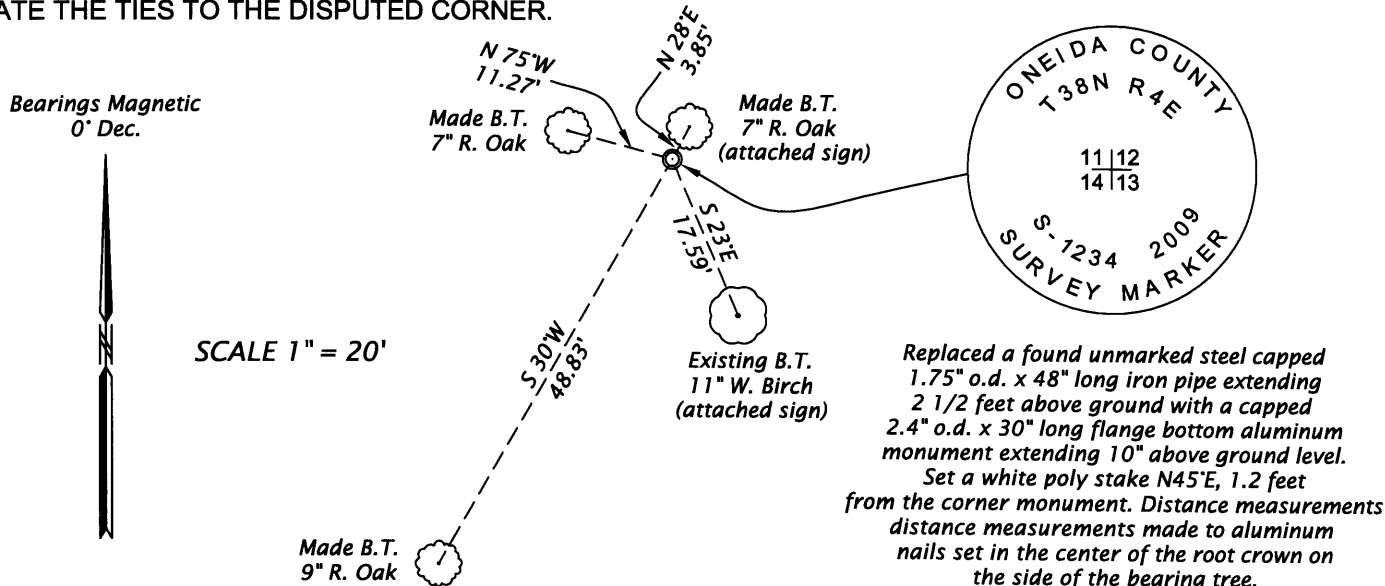
December 2nd, 1937 through 9/9/40 - Ray H. Hall, Deputy County Surveyor, CC Camp 75-S Survey Book 9, pages 21 and 22 - Decide to set a temporary corner .86 chains W. of random at station 80.32 chains south of original northeast corner of Section 11.

November 1969 - Northwoods Surveyors Inc. map by John H. Fisher, RLS #836, map filed as C1569 in the O.C. Land Records Office (accompany field notes and work drawings at the office of Foltz and Associates in Minocqua, Wisconsin) determined this corner is lost and reestablish it by double proportionate measurement between the nearest section corners.

Nov. 18, 1983 - Owens-Illinois map in Section 13, by W. H. Stuth, identifies the corner monument by Northwoods Surveyors Inc. in 1969.

April 12, 2009 - James D. Rein, RLS # 1234 - Recovered an unmarked steel capped 1.75" o.d. x 48" long iron pipe extending 2 1/2 feet above ground and referenced by an 11" dia. W. Birch bearing tree shown in plan. Although there is no remaining evidence of the original corner, I accept it as having been established in good faith using proper methods and procedures. It has been accepted by numerous surveys, thus I replace the existing monument with a capped 2.4" o.d. x 30" long flange bottom aluminum monument extending 10" above ground. I make additional reference bearing trees, marked "BT", as shown in the plan.

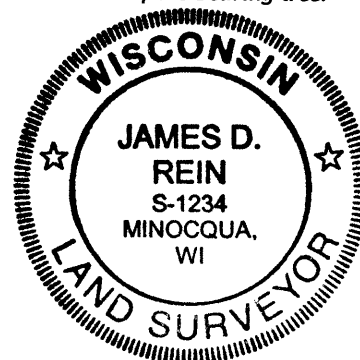
(c)(d)(e) PLAN VIEW OF CORNER WITH TIES TO AT LEAST 4 WITNESS MONUMENTS. IF IN DISAGREEMENT WITH PREVIOUSLY ESTABLISHED CORNER, SHOW THE DISTANCE BETWEEN THE TWO CORNERS AND ALSO INDICATE THE TIES TO THE DISPUTED CORNER.



(i) I, JAMES D. REIN, REGISTERED LAND SURVEYOR NO. S-1234 HEREBY CERTIFY THAT THE CORNER LOCATION ON THIS RECORD WAS DETERMINED BY ME OR UNDER MY DIRECTION AND CONTROL AND THAT THIS U.S. PUBLIC LAND SURVEY MONUMENT RECORD IS CORRECT AND COMPLETE TO THE BEST OF MY KNOWLEDGE AND BELIEF.

SIGNATURE

DATE 4/23/09 3804110000



INDEX NO. 5-21