

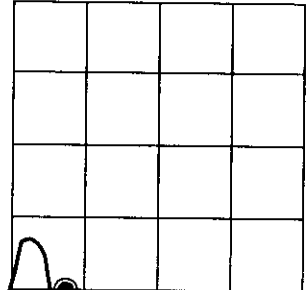
# U.S. PUBLIC LAND SURVEY MONUMENT RECORD

Note: This form is intended and designed to fulfill all requirements of Wisconsin Administrative Code, Chapter A-E 7.08 U.S. Public Land Survey Monument Record (3)(a)(b)(c)(d)(e)(f)(g)(h)(i). An additional sheet may be added if necessary to conform with said requirements.

**(a) CORNER LOCATION:**

South Meander corner of Sec. 11  
 Township 38 North  
 Range 4 East  
 Town ~~City/Village~~ Minocqua  
 County of Oneida

State Plane Coordinates  
 X \_\_\_\_\_  
 Y \_\_\_\_\_  
 Datum Base \_\_\_\_\_



SECTION 11

**(b) HISTORY OF ORIGINAL CORNER ESTABLISHMENT**

Original Surveyor: Alexander Anderson  
 Date of Survey: Commenced April 26th, 1865  
 Completed May 8th, 1865

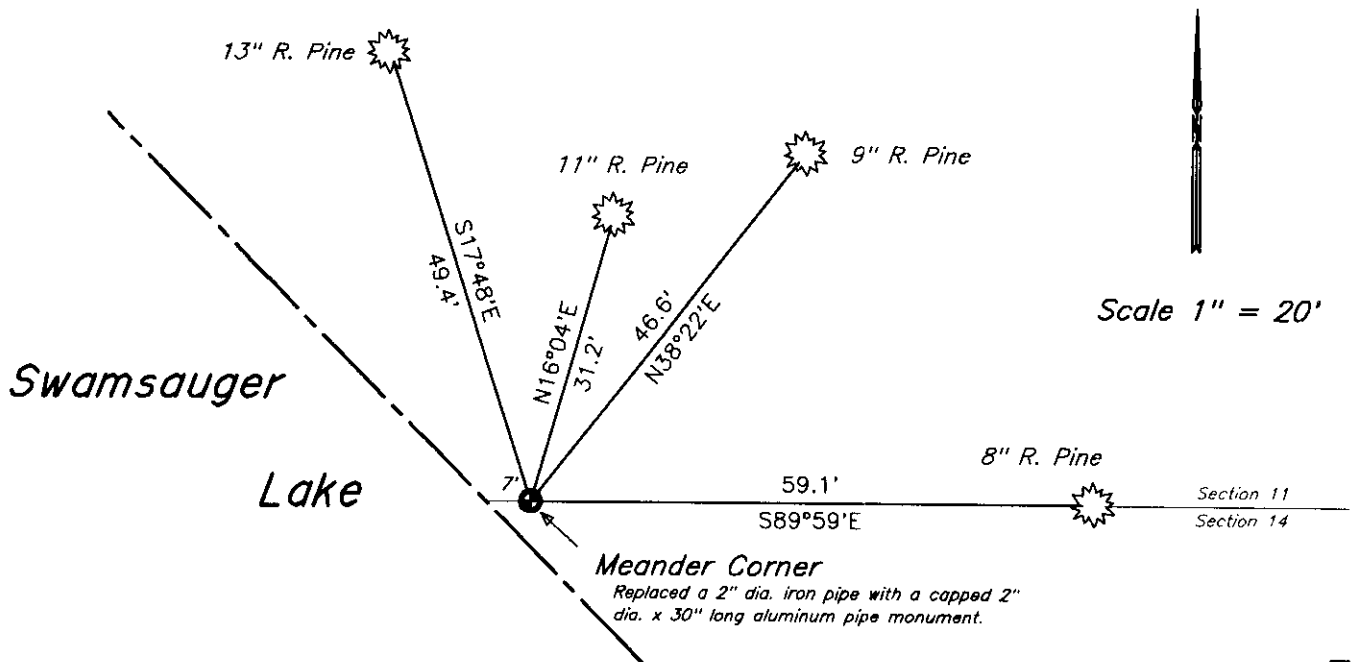
Original B.T.'S  
 Birch 10", N50°W, 43 links  
 Birch 8", S80°E, 23 links

**(f)(g)(h) Description of monument found at this corner and if it was accepted, state all evidence (material, testimonial, occupational, plats, records, other monuments) used as a basis for establishing location. If not accepted or if nothing was found, state evidence used as basis for establishing location. If reestablished through lost corner proportionate methods, indicate all monuments, distances and directions used to establish. Indicate type of monument and sign post found or set.**

November 1969 – John H. Fisher, Land Surveyor, identifies the Meander Corner, on Map Number 14-384, as being an iron pipe set, referenced by two bearing trees: a 6" Maple, N84°W, 8.0'; and a 10" W. Birch, S61°E, 23.4'.

May 28th, 1997 – James D. Rein, Registered Land Surveyor Number S-1234, recovered a 2" dia. iron pipe and replaced it with a capped 2" dia. aluminum pipe monument, referenced by four new bearing trees as shown in plan view. A white plastic county post was set 1 foot northeasterly of the monument.

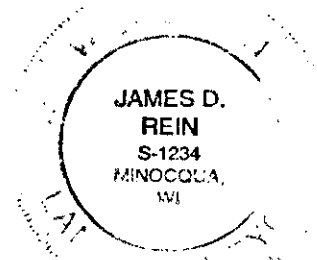
**(c)(d)(e) Plan view of corner with ties to at least 4 witness monuments. If in disagreement with previously established corner, show the distance between the two corners and also indicate the ties to the disputed corner.**



(i) I, James D. Rein, Registered Land Surveyor No. 1234, hereby certify that the corner location on this record was determined by me or under my direction and control and that this U.S. Public Land Survey Monument Record is correct and complete to the best of my knowledge and belief.

*James D. Rein*  
 Signature

MAY 28TH, 1997  
 Date



INDEX NO. 517-18

3804110032