

# U.S. PUBLIC LAND SURVEY MONUMENT RECORD

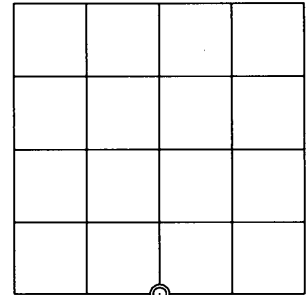
Note: This form is intended and designed to fulfill all requirements of the Wisconsin Administrative Code, Chapter A-E 7.08 U.S. Public Land Monument Record (3)(a)(b)(c)(d)(e)(f)(g)(h)(i). An additional sheet may be added if necessary to conform with said requirements.

(a) CORNER LOCATION:  
 South 1/4 corner of Section 12  
 Township 38 North  
 Range 4 East  
 Town of Minocqua  
 County of Oneida

COORDINATES  
 North: 220470.198  
 East: 131273.785  
 Control Station: Oneida County #295  
 Latitude: 45°46'27.13998"  
 Longitude: 89°56'42.55785"  
 Datum: NAD-83, '91  
 Method: Direct RTK GPS

(RECORDING AREA)

SECTION 12



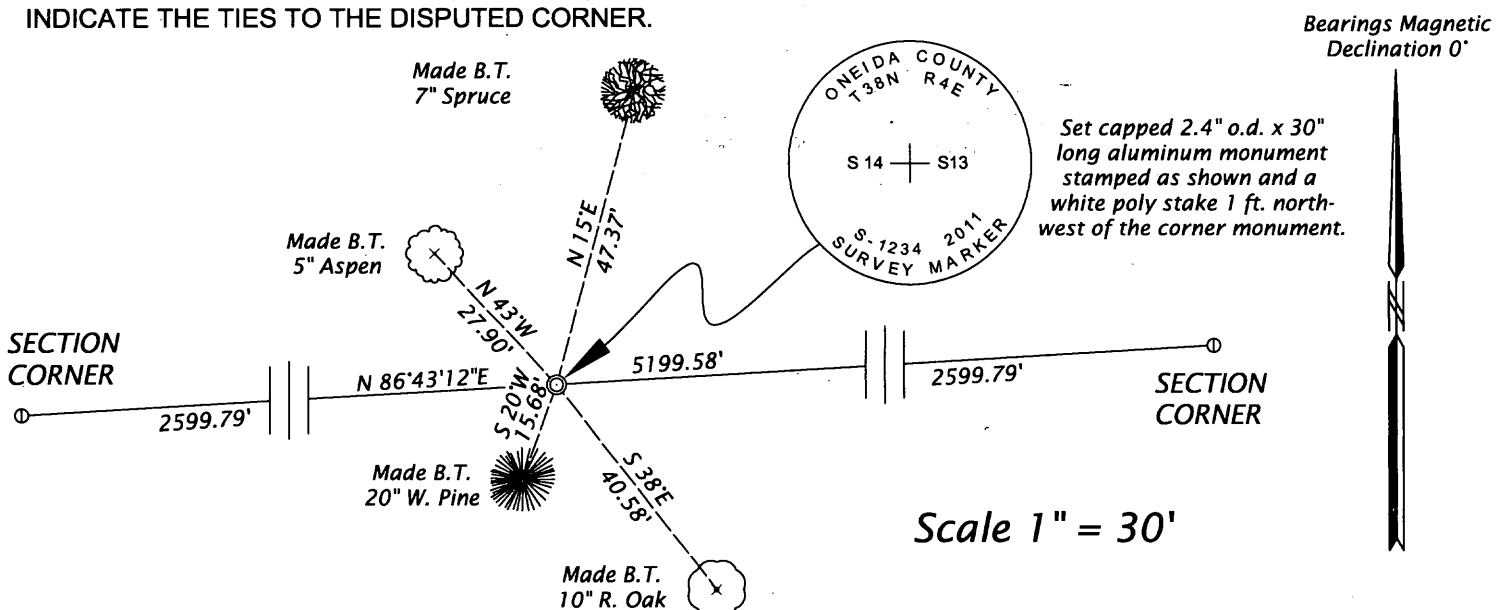
(b) HISTORY OF ORIGINAL CORNER ESTABLISHMENT

Original Surveyor: Alex Anderson, Deputy Surveyor  
 Date of Survey: Commenced April 26, 1865  
 Completed May 8, 1865  
 Original B.T.'s: Hemlock 12" N 14°W, 17 links  
 Hemlock 12" S 82°E, 23 links

(f)(g)(h) DESCRIPTION OF MONUMENT FOUND AT THIS CORNER AND IF IT WAS ACCEPTED, STATE ALL EVIDENCE (MATERIAL, TESTIMONIAL, OCCUPATIONAL, PLATS, RECORDS, OTHER MONUMENTS) USED AS A BASIS FOR ESTABLISHING LOCATION. IF NOT ACCEPTED OF IF NOTHING WAS FOUND, STATE EVIDENCE USED AS BASIS FOR ESTABLISHING LOCATION. IF REESTABLISHED THROUGH LOST CORNER PROPORTIONATE METHODS, INDICATE ALL MONUMENTS, DISTANCES AND DIRECTIONS USED TO ESTABLISH. INDICATE TYPE OF MONUMENT AND SIGN POST FOUND OR SET.

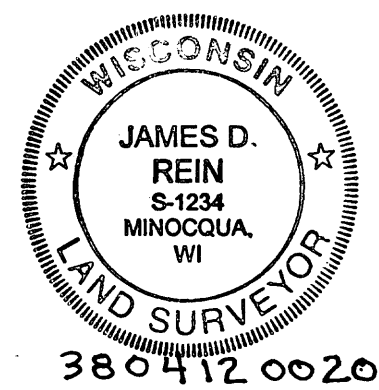
November 17, 2011 - James D. Rein, RLS No. 1234 - We are unable recover any evidence of the original corner and bearing trees, or any subsequent record for the perpetuation of this corner. Thus, I determine it is a lost corner and restore it by single proportionate measurement as shown below in the plan. We set a capped 2.4" o.d. x 30" long flange bottom aluminum monument at the corner, and a white poly stake 1 foot northwest of the corner monument. We also made reference ties to aluminum nails set in the center of the root crown on sides of four new scribed bearing trees as shown below in plan.

(c)(d)(e) PLAN VIEW OF CORNER WITH TIES TO AT LEAST 4 WITNESS MONUMENTS. IF IN DISAGREEMENT WITH PREVIOUSLY ESTABLISHED CORNER, SHOW THE DISTANCE BETWEEN THE TWO CORNERS AND ALSO INDICATE THE TIES TO THE DISPUTED CORNER.



(i) I, JAMES D. REIN, PROFESSIONAL LAND SURVEYOR NO. S-1234 HEREBY CERTIFY THAT THE CORNER LOCATION ON THIS RECORD WAS DETERMINED BY ME OR UNDER MY DIRECTION AND CONTROL AND THAT THIS U.S. PUBLIC LAND SURVEY MONUMENT RECORD IS CORRECT AND COMPLETE TO THE BEST OF MY KNOWLEDGE AND BELIEF.

SIGNATURE: *[Handwritten Signature]*  
 DATE: 12-14-11



INDEX NO. 523