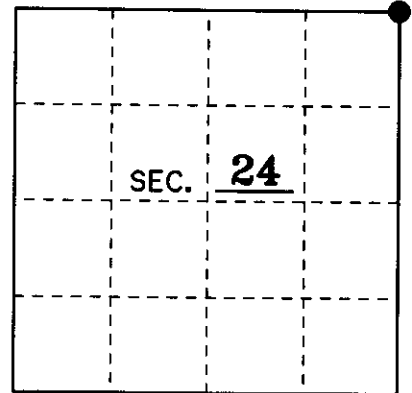


# U.S. PUBLIC LAND SURVEY MONUMENT RECORD

Note: This form is intended and designed to fulfill all requirements of Wisconsin Administrative Code, Chapter A-E 7.08 U.S. Public Land Monument Record (3)(a)(b)(c)(d)(e)(f)(g)(h)(i). An additional sheet may be added if necessary to conform with said requirements.

(a) CORNER LOCATION: Northeast County or State Plane Coordinates  
Section 24 Corner of Section 24 Northing \_\_\_\_\_  
 Township 38 North Easting \_\_\_\_\_  
 Range 4 East Datum Base \_\_\_\_\_  
 Township/City Minocqua County of ONEIDA



(b) HISTORY OF ORIGINAL CORNER ESTABLISHMENT Original B.T.'s  
 Original Surveyor: Alfred Millard 12" W.Pine N 60°W 21 Lks.  
 Date of Survey: September 1860 12" W.Pine N 65°E 3 Lks.  
 4" Hemlock S 60°E 6 Lks.  
 8" Y.Birch S 10° W 7 Lks.

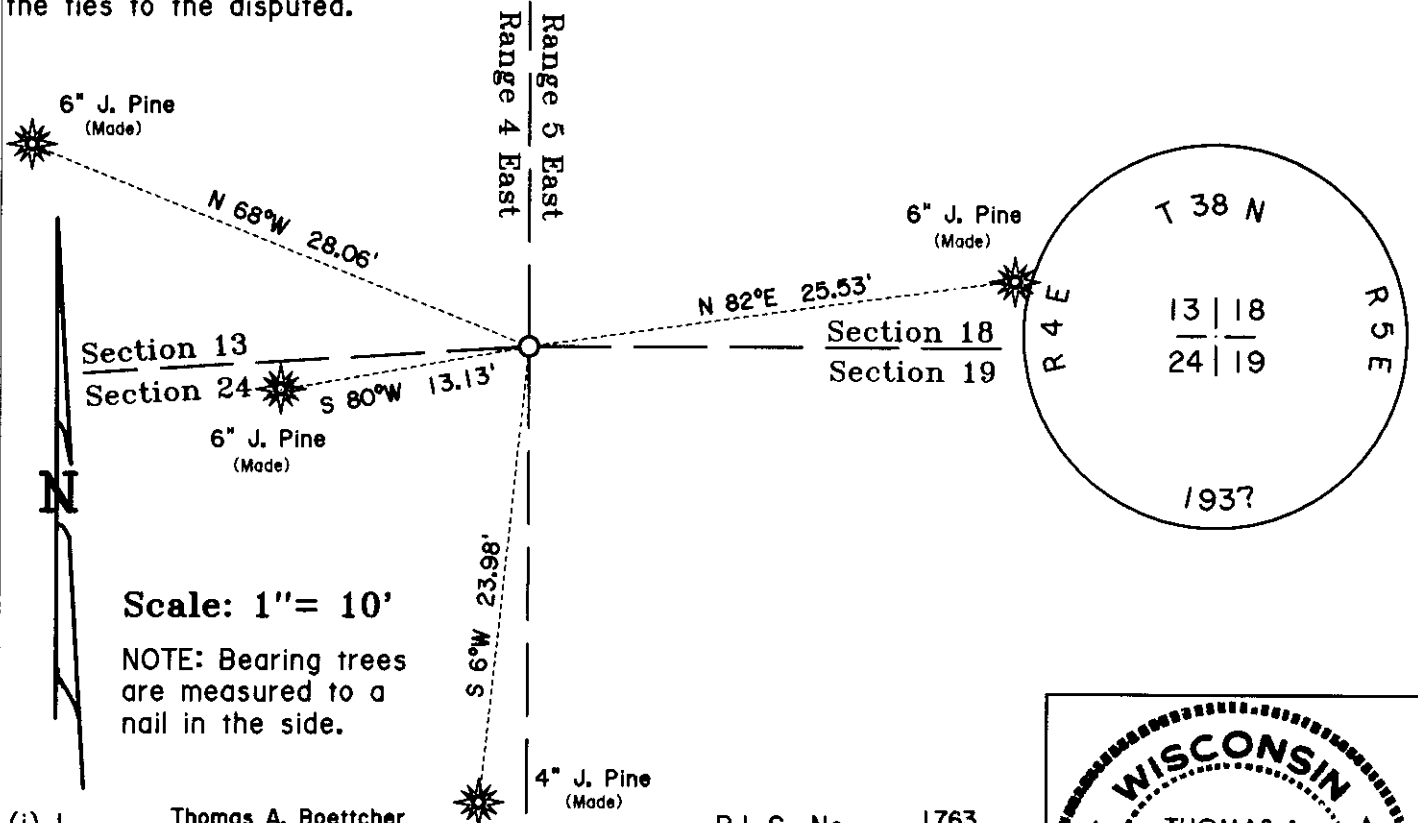
(b)(f)(g)(h) Description of monument found at this corner and if it was accepted, state all evidence (material, testimonial, occupational, plats, records, other monuments) used as a basis for accepting. If not accepted or if nothing was found, state evidence used as basis for establishing location. If reestablished through lost corner proportionate methods, indicate all monuments, distances and directions used to establish. Indicate type of monument and sign post found or set.

1957: An Ownership Boundary Survey by Owens-Illinois surveyed by Becker in 1957 and drawn by W. H. Stuth on 3/10/87 shows a "corner by others" at this location, in thier survey in Section 19, T 38 N, R 5 E.

11/18/83: An Approximate Boundary Survey by Ownes-Illinois drawn by W.H. Stuth shows a "corner by others" in thier survey in Section 13, T 38 N, R 4 E.

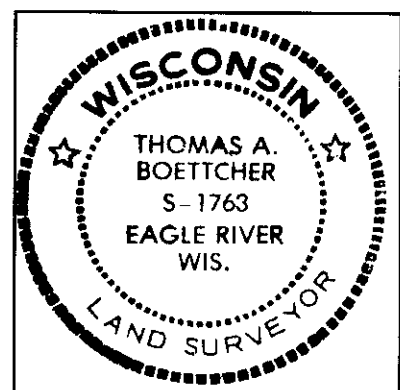
January 5, 2002: I, Thomas A. Boettcher, found a 2" iron pipe with a brass cap bent completely over onto the ground. The corner apparently had been run over by logging equipment in the winter. I removed the monument and bent it back straight and reset it in the same hole that its base was in before, leaving it extending 3" above the ground. I could find no evidence of B.T.'s so I made four new B.T.'s as shown below and set a plastic sign post 1.5' North of the corner.

(c)(d)(e) Plan view of the corner with ties to at least 4 witness monuments. If in disagreement with previously established corner, show the distances between the two corners and also indicate the ties to the disputed.



(i) I, Thomas A. Boettcher R.L.S. No. 1763  
 hereby certify that the corner location on this record was determined by me or under my direction and control and that this U.S. Public Land Survey Monument Record is correct and complete to the best of my knowledge and belief.

Signature [Signature] Date 4/8/2002



Index No. \_\_\_\_\_