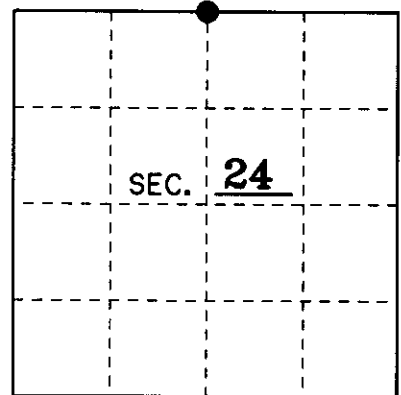


U.S. PUBLIC LAND SURVEY MONUMENT RECORD

Note: This form is intended and designed to fulfill all requirements of Wisconsin Administrative Code, Chapter A-E 7.08 U.S. Public Land Monument Record (3)(a)(b)(c)(d)(e)(f)(g)(h)(i). An additional sheet may be added if necessary to conform with said requirements.

(a) CORNER LOCATION: _____ County or State Plane Coordinates
 North 1/4 Corner of Section 24 Northing _____
 Township 38 North Easting _____
 Range 4 East Datum Base _____
 Township/City Minocqua County of ONEIDA



(b) HISTORY OF ORIGINAL CORNER ESTABLISHMENT Original B.T.'s
 Original Surveyor: Alex Anderson 10" Hemlock N 81°W 22 Lks.
 Date of Survey: May 1865 10" Hemlock S 42°E 5 Lks.

(b)(f)(g)(h) Description of monument found at this corner and if it was accepted, state all evidence (material, testimonial, occupational, plats, records, other monuments) used as a basis for accepting. If not accepted or if nothing was found, state evidence used as basis for establishing location. If reestablished through lost corner proportionate methods, indicate all monuments, distances and directions used to establish. Indicate type of monument and sign post found or set.

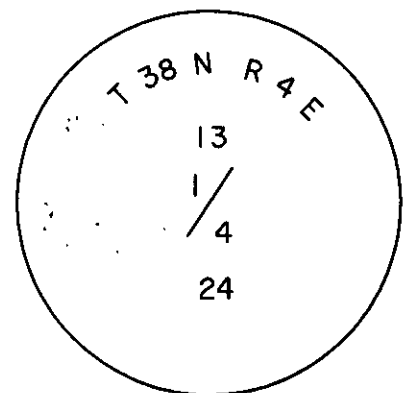
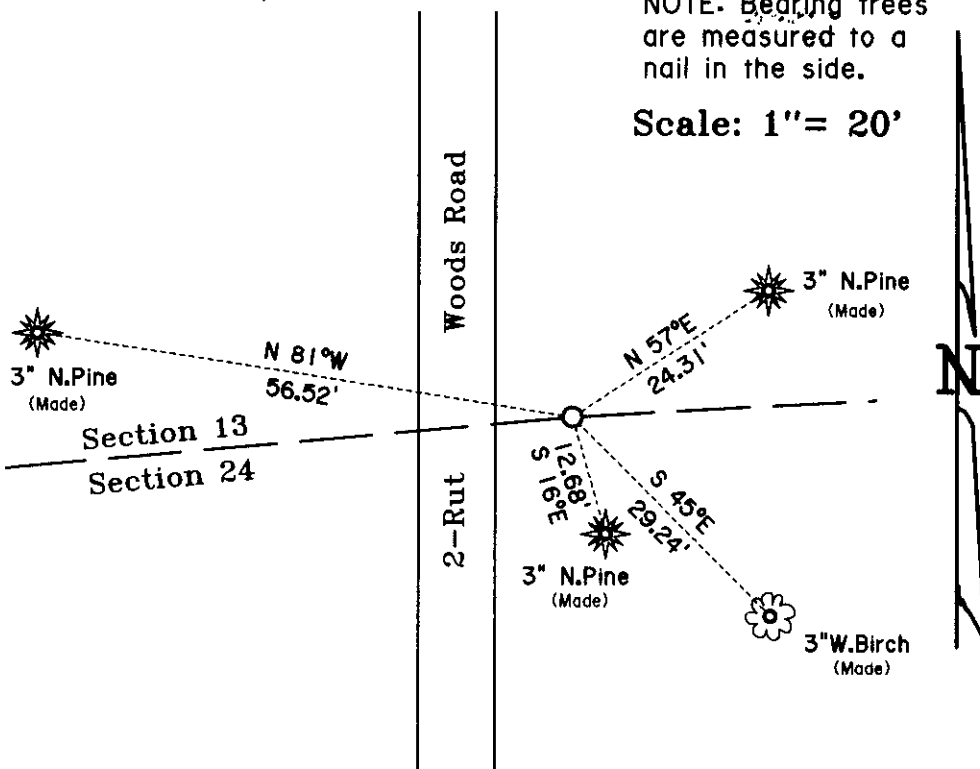
December 2001: I could find no survey maps which showed this corner in the Oneida County Surveyor's records. I was able to locate a number of timber maps that did show a Northerly bend in the North line of Section 24. Two of these are recorded in Volume 767, Page 073 and Volume 985, Page 714, Oneida County records.

January 5, 2002: I, Thomas A. Boettcher, found a 1-1/2" x 4' long iron pipe with a brass threaded-on cap with its base in a small mound of rocks, 12' East of a woods road. The pipe was only a few inches into the ground, so I dug the monument down till it was 1.5' high. I could find no evidence of B.T.'s so I made four new B.T.'s as shown below and set a plastic sign post 1' North of the corner. The corner position fits with the way the timber maps show a Northerly bend in the Section line.

(c)(d)(e) Plan view of the corner with ties to at least 4 witness monuments. If in disagreement with previously established corner, show the distances between the two corners and also indicate the ties to the disputed.

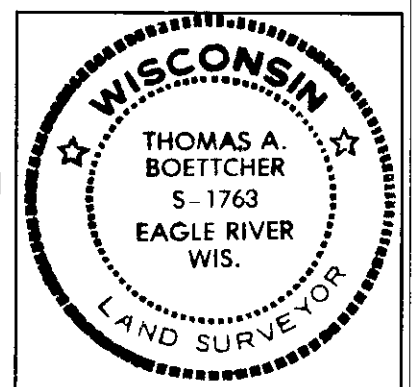
NOTE: Bearing trees are measured to a nail in the side.

Scale: 1" = 20'



(i) I, Thomas A. Boettcher R.L.S. No. 1763
 hereby certify that the corner location on this record was determined by me or under my direction and control and that this U.S. Public Land Survey Monument Record is correct and complete to the best of my knowledge and belief.

Signature [Signature] Date 4/8/2002



Index No.

FILED
JUN 30 2008

At O'Clock M

U.S. PUBLIC LAND SURVEY MONUMENT RECORD

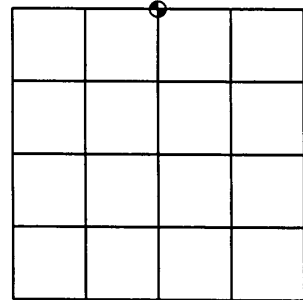
Note: This form is intended and designed to fulfill all requirements of the Wisconsin Administrative Code, Chapter A-E 7.08 U.S. Public Land Monument Record (3)(a)(b)(c)(d)(e)(f)(g)(h)(i). An additional sheet may be added if necessary to conform with said requirements.

(a) CORNER LOCATION:

North quarter corner of Section 24
Township 38 North
Range 4 East
Town of Minocqua
County of Oneida

O.C. COORDINATES

North: 215167.0454
East: 131249.9682
Control Station: O.C. #295
Latitude: 45°46'27.13998"N
Longitude: 89°56'42.55785"W
Datum: NAD 83 (1991) Method: Offset



SECTION 24

(b) HISTORY OF ORIGINAL CORNER ESTABLISHMENT

Original Surveyor: Alex Anderson
Date of Survey: Commenced - July 13th, 1864
Completed - July 24th, 1864

Original B.T.'S: Hemlock 10" N81°W 22 links
Hemlock 10" S42°E 5 links

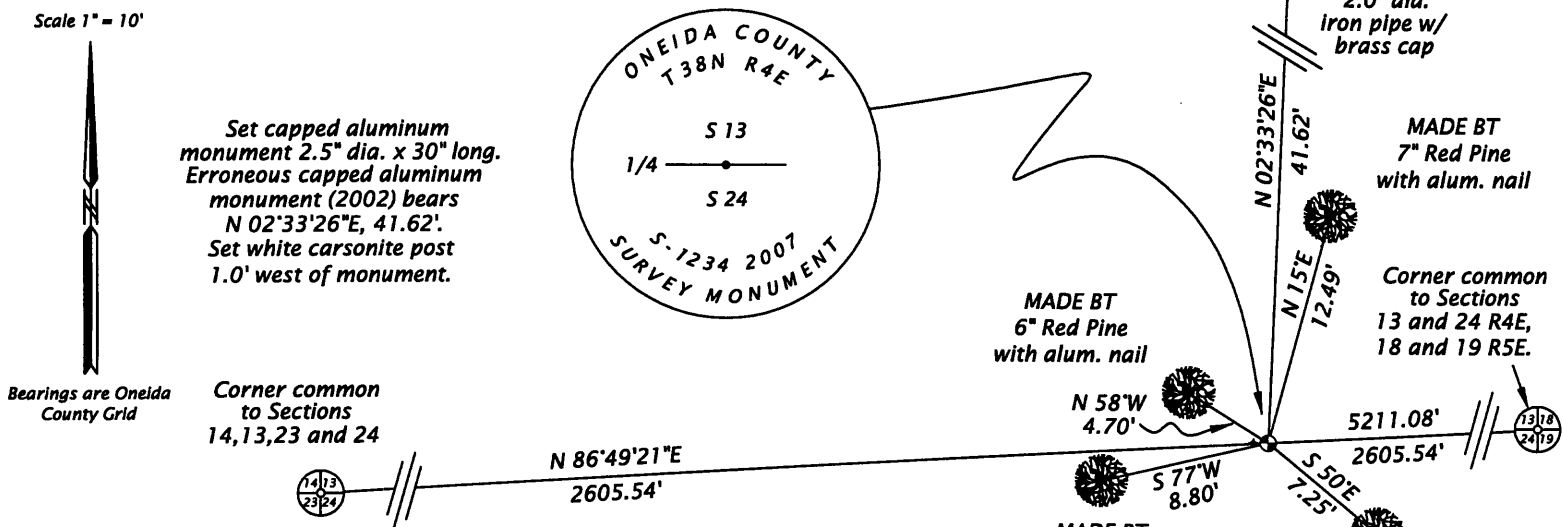
(f)(g)(h) DESCRIPTION OF MONUMENT FOUND AT THIS CORNER AND IF IT WAS ACCEPTED, STATE ALL EVIDENCE (MATERIAL, TESTIMONIAL, OCCUPATIONAL, PLATS, RECORDS, OTHER MONUMENTS) USED AS A BASIS FOR ESTABLISHING LOCATION. IF NOT ACCEPTED OF IF NOTHING WAS FOUND, STATE EVIDENCE USED AS BASIS FOR ESTABLISHING LOCATION. IF REESTABLISHED THROUGH LOST CORNER PROPORTIONATE METHODS, INDICATE ALL MONUMENTS, DISTANCES AND DIRECTIONS USED TO ESTABLISH. INDICATE TYPE OF MONUMENT AND SIGN POST FOUND OR SET.

November 11, 1939 - R.H. Hall, surveyor, per notes filed at Oneida County Land Records Office in CCC book No. 9, page 40, sets cedar post and RR rail by single proportionate measurement.

January 5, 2002 - Thomas A. Boettcher, RLS No. 1763, per USPLS Monument Record No. 3804130020 filed at Oneida County Land Records Office, "found a 1.5" x 4' long iron pipe with a brass threaded-on cap with its base in a small mound of rocks, 12' East of a woods road. The pipe was only a few inches into the ground, so Boettcher dug the monument down till it was 1.5' high."

April 18, 2007 - James D. Rein, RLS No. 1234, Recover and examine evidence established by Boettcher. It is my opinion that in reading said corner form, Hall's monument (having been established by single proportionate measurement) was removed by a tree plow. Therefore I do not accept Boettcher's location and re-establish by single proportionate measurement on a line between the Northwest corner of Section 24 and the Northeast corner of Section 24 and set a capped aluminum monument with accessories as shown in plan.

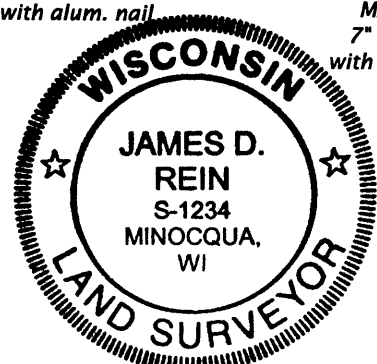
(c)(d)(e) PLAN VIEW OF CORNER WITH TIES TO AT LEAST 4 WITNESS MONUMENTS. IF IN DISAGREEMENT WITH PREVIOUSLY ESTABLISHED CORNER, SHOW THE DISTANCE BETWEEN THE TWO CORNERS AND ALSO INDICATE THE TIES TO THE DISPUTED CORNER.



(i) I, JAMES D. REIN, REGISTERED LAND SURVEYOR NO. S-1234 HEREBY CERTIFY THAT THE CORNER LOCATION ON THIS RECORD WAS DETERMINED BY ME OR UNDER MY DIRECTION AND CONTROL AND THAT THIS U.S. PUBLIC LAND SURVEY MONUMENT RECORD IS CORRECT AND COMPLETE TO THE BEST OF MY KNOWLEDGE AND BELIEF.

[Handwritten Signature]
SIGNATURE

9/02/07
DATE 3804130020



INDEX NO. N-23