

# U.S. PUBLIC LAND SURVEY MONUMENT RECORD

Note: This form is intended and designed to fulfill all requirements of the Wisconsin Administrative Code, Chapter A-E 7.08 U.S. Public Land Monument Record (3)(a)(b)(c)(d)(e)(f)(g)(h)(i). An additional sheet may be added if necessary to conform with said requirements.

**(a) CORNER LOCATION:**

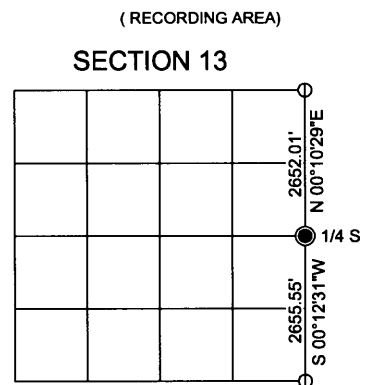
East 1/4 corner of Section 13  
 Township 38 North  
 Range 4 East  
 Town of Minocqua  
 County of Oneida

**COORDINATES**

North: 217966.997  
 East: 133861.170  
 Control Station: Oneida County #295  
 Latitude: 45°46'27.13998"  
 Longitude: 89°56'42.55785"  
 Datum: NAD-83, '91  
 Method: Direct RTK GPS

**(b) HISTORY OF ORIGINAL CORNER ESTABLISHMENT**

Original Surveyor: Alfred Millard, Deputy Surveyor  
 Date of Survey: Commenced September 12, 1860  
 Completed September 17, 1860  
 Original B.T.'s: Hemlock 10" N78°E, 2 links  
 Y. Birch 10" N58°W, 13 links

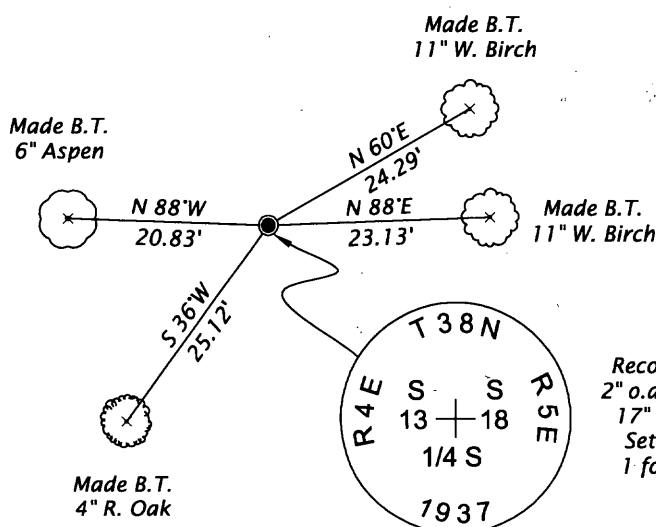


**(f)(g)(h) DESCRIPTION OF MONUMENT FOUND AT THIS CORNER AND IF IT WAS ACCEPTED, STATE ALL EVIDENCE (MATERIAL, TESTIMONIAL, OCCUPATIONAL, PLATS, RECORDS, OTHER MONUMENTS) USED AS A BASIS FOR ESTABLISHING LOCATION. IF NOT ACCEPTED OF IF NOTHING WAS FOUND, STATE EVIDENCE USED AS BASIS FOR ESTABLISHING LOCATION. IF REESTABLISHED THROUGH LOST CORNER PROPORTIONATE METHODS, INDICATE ALL MONUMENTS, DISTANCES AND DIRECTIONS USED TO ESTABLISH. INDICATE TYPE OF MONUMENT AND SIGN POST FOUND OR SET.**

October 17th, 1933 and continuing through April 23, 1937 - Ray H. Hall, Surveyor, Camp 75-S Minocqua CCC - Field Book 2, pages 24 through 38 for survey in T38N, R5E, unsuccessful search for evidence of original corners along township line between original 1/4 corner common to Sections 7 and 12 and the original 1/4 corner common to Sections 19 and 24. Hall (page 30) "Set brass topped Monument & post. no bearings near", by offset from random line at intervals of 40.2853 chains (2658.83 feet) as shown in diagram on page 35.

November 17, 2011 - James D. Rein, RLS No. 1234 - We recover a marked brass capped 2.5" o.d. iron pipe extending 17" above ground level with a very old scribed 6" dia. wood post 1 foot north of corner monument. Because I find the monument near the theoretical record position between section corners, I accept it as marking the re-established corner by single proportionate measurement. We set a white poly stake 1 foot south of the corner monument and made reference ties to aluminum nails set in the center of the root crown on sides of four new scribed bearing trees as shown below in plan.

**(c)(d)(e) PLAN VIEW OF CORNER WITH TIES TO AT LEAST 4 WITNESS MONUMENTS. IF IN DISAGREEMENT WITH PREVIOUSLY ESTABLISHED CORNER, SHOW THE DISTANCE BETWEEN THE TWO CORNERS AND ALSO INDICATE THE TIES TO THE DISPUTED CORNER.**



Scale 1" = 20'

Bearings Magnetic Declination 0'



(i) I, JAMES D. REIN, PROFESSIONAL LAND SURVEYOR NO. S-1234 HEREBY CERTIFY THAT THE CORNER LOCATION ON THIS RECORD WAS DETERMINED BY ME OR UNDER MY DIRECTION AND CONTROL AND THAT THIS U.S. PUBLIC LAND SURVEY MONUMENT RECORD IS CORRECT AND COMPLETE TO THE BEST OF MY KNOWLEDGE AND BELIEF.

*[Handwritten Signature]*

12-14-11  
 DATE



3804132000

INDEX NO. L 25