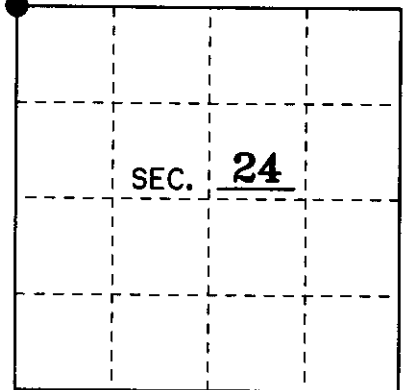


U.S. PUBLIC LAND SURVEY MONUMENT RECORD

Note: This form is intended and designed to fulfill all requirements of Wisconsin Administrative Code, Chapter A-E 7.08 U.S. Public Land Monument Record (3)(a)(b)(c)(d)(e)(f)(g)(h)(i). An additional sheet may be added if necessary to conform with said requirements.

(a) CORNER LOCATION: Northwest County or State Plane Coordinates ●
Section Corner of Section 24 Northing _____
 Township 38 North Easting _____
 Range 4 East Datum Base _____
 Township/City Minocqua County of ONEIDA



(b) HISTORY OF ORIGINAL CORNER ESTABLISHMENT Original B.T.'s
 Original Surveyor: Alex Anderson 12" W. Pine S 5° W 29 Lks.
 Date of Survey: May 1865 12" Birch N 33° E 16 Lks.

(b)(f)(g)(h) Description of monument found at this corner and if it was accepted, state all evidence (material, testimonial, occupational, plats, records, other monuments) used as a basis for accepting. If not accepted or if nothing was found, state evidence used as basis for establishing location. If reestablished through lost corner proportionate methods, indicate all monuments, distances and directions used to establish. Indicate type of monument and sign post found or set.

11/18/1983: W.H. Stuth of Owens-Illinois (Approximate Boundary Survey) shows that he found "corner by others".

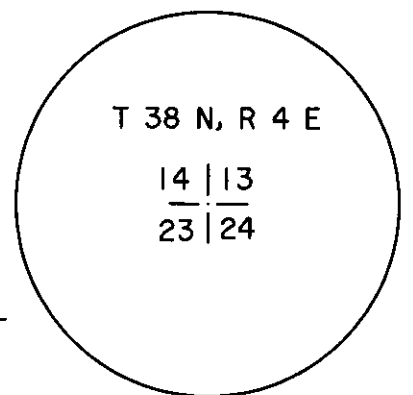
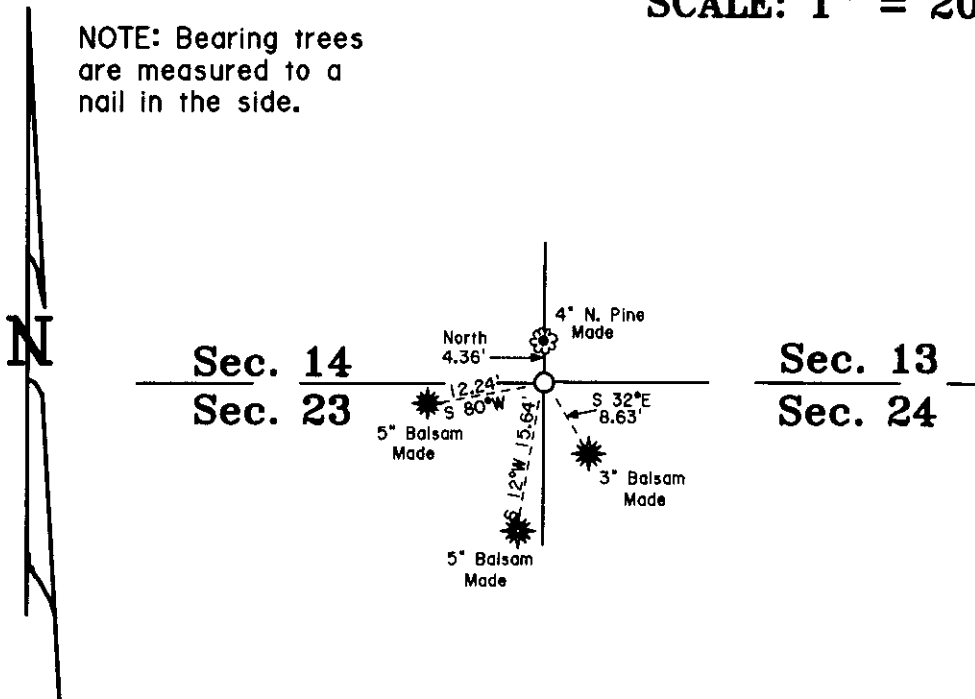
2/8/1989: W. H. Stuth of Nekoosa Papers Inc. prepared a survey map where this corner was found "by others" and notes that this is from an approximate survey, staff, compass & chain, surveyed 1950's.

11/28/2001: I, Thomas A. Boettcher, found a 2" iron pipe with a brass cap leaning slightly South, 0.2'. I found no evidence of bearing trees, so I made four new ones as shown below. I also set a plastic sign post 1' Northeast of the corner.

(c)(d)(e) Plan view of the corner with ties to at least 4 witness monuments. If in disagreement with previously established corner, show the distances between the two corners and also indicate the ties to the disputed.

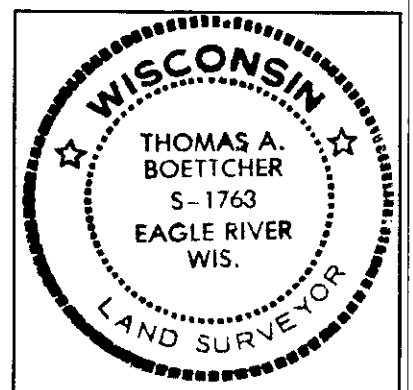
SCALE: 1" = 20'

NOTE: Bearing trees are measured to a nail in the side.



(i) I, Thomas A. Boettcher R.L.S. No. 1763
 hereby certify that the corner location on this record was determined by me or under my direction and control and that this U.S. Public Land Survey Monument Record is correct and complete to the best of my knowledge and belief.

Signature *Thomas A. Boettcher* Date 11/28/2001



Index No. N-21

38 04 14 0000