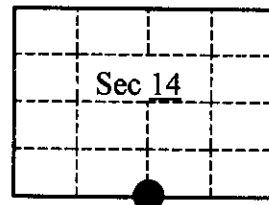


# U.S. PUBLIC LAND SURVEY MONUMENT RECORD

Note: This form is intended and designed to fulfill all requirements of Wisconsin Administrative Code, Chapter A-E 7.08 U.S. Land Survey Monument Record (3)(a)(b)(c)(d)(e)(f)(g)(h)(i). An additional sheet may be added if necessary to conform with said requirements.

(a) CORNER LOCATION: State Plane Coordinates  
S<sup>1</sup>/<sub>4</sub> Corner of Sec. 14 X -----  
 Township 38 North Y -----  
 Range 4 East Datum Base -----  
 Town Minocqua County of Oneida



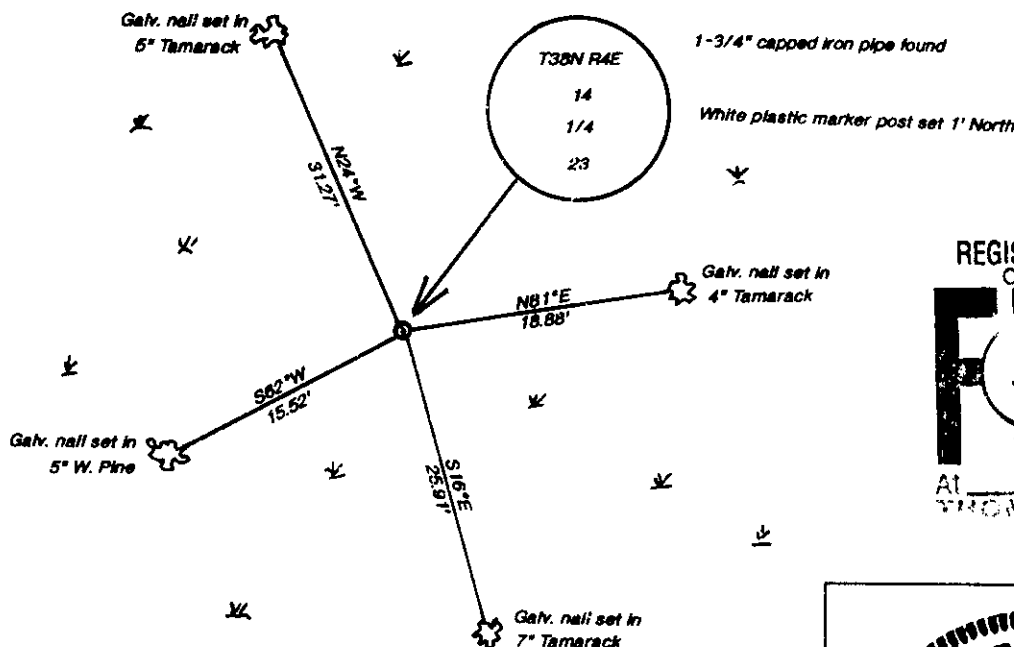
(b) HISTORY OF ORIGINAL CORNER ESTABLISHMENT Original B.T.'s

Original Surveyor: Alex Anderson Spruce 6", S20°W, 29 links  
 Date of Survey: Commenced April, 1865 Spruce 6", N70°E, 27 links  
 Completed May, 1865

(b)(f)(g)(h) Description of monument found at this corner and if it was accepted, state all evidence (material, testimonial, occupational, plats, records, other monuments) used as a basis for accepting. If not accepted or if nothing was found, state evidence used as basis for establishing location. If reestablished through lost corner proportionate methods, indicate all monuments, distances and directions used to establish. Indicate type of monument and sign post found or set.

- 1956 - NEPCO Map by Stuth - drawn in 1989 - shows a monument at the S<sup>1</sup>/<sub>4</sub> location and labels it "1/4 corner original - cedar post"
- 1997 - I found and accepted NEPCO's galvanized capped iron pipe marked as shown below with a wood post adjacent scribed "1/4, 14-23".

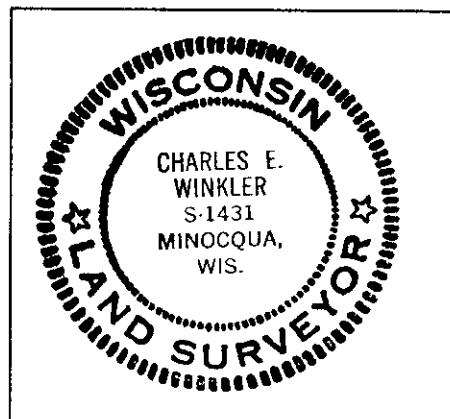
(c)(d)(e) Plan view of corner with ties to at least 4 witness monuments. If in disagreement with previously established corner, show the distances between the two corners and also indicate the ties to the disputed.



REGISTER OF DEEDS OFFICE  
 ONEIDA COUNTY, WIS.  
**FILED**  
 JAN 18 1999  
 At \_\_\_\_\_ O'Clock \_\_\_\_\_  
 THOMAS H. LEIGHTON  
 REGISTER

(i) I, Charles E. Winkler, #S-1431  
 hereby certify that the corner location on this record was determined by me or under my direction and control and that this U.S. Public Land Survey Monument Record is correct and complete to the best of my knowledge and belief.

Charles E. Winkler 1/12/1999  
 Signature Foltz & Associates, Inc. Date



Index No. 19

3804140020

# U.S. PUBLIC LAND SURVEY MONUMENT RECORD

REGISTER OF DEEDS OFFICE  
ONEIDA COUNTY  
FILED

NOV 20 2018

KYLE J. FRANSON  
REGISTER OF DEEDS

Note: This form is intended and designed to fulfill all requirements of the Wisconsin Administrative Code, Chapter A-E 7.08 U.S. Public Land Monument Record (3)(a)(b)(c)(d)(e)(f)(g)(h)(i). An additional sheet may be added if necessary to conform with said requirements.

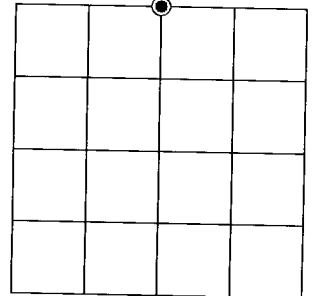
(a) CORNER LOCATION:

North Quarter Corner of Section 23  
Township 38 North  
Range 4 East  
Town of Minocqua  
County of Oneida

North:  
East:  
Datum:  
GNSS Method:  
GNSS Control:

(RECORDING AREA)

SECTION 23



(b) HISTORY OF ORIGINAL CORNER ESTABLISHMENT

Original Surveyor:  
Date of Survey: Commenced  
Completed  
Original B.T.'S

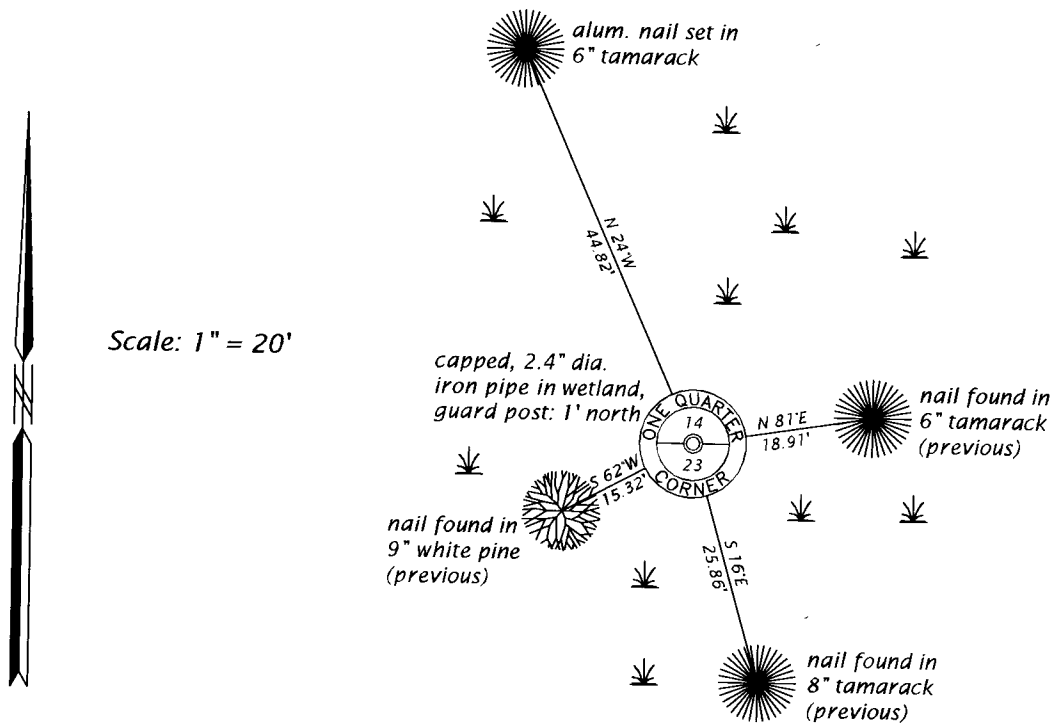
**SEE PREVIOUS U.S.P.L.S. MONUMENT  
RECORD DATED JANUARY 12, 1999.**

(f)(g)(h) DESCRIPTION OF MONUMENT FOUND AT THIS CORNER AND IF IT WAS ACCEPTED, STATE ALL EVIDENCE (MATERIAL, TESTIMONIAL, OCCUPATIONAL, PLATS, RECORD, OTHER MONUMENTS) USED AS A BASIS FOR ESTABLISHING LOCATION. IF NOT ACCEPTED OR IF NOTHING WAS FOUND, STATE EVIDENCE USED AS BASIS FOR ESTABLISHING LOCATION. IF REESTABLISHED THROUGH LOST CORNER PROPORTIONATE METHODS, INDICATE ALL MONUMENTS, DISTANCES AND DIRECTIONS USED TO ESTABLISH. INDICATE TYPE OF MONUMENT AND SIGN POST FOUND OR SET.

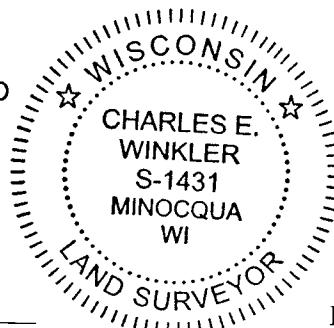
This is a perpetuation of a previous U.S.P.L.S. Monument Record by Charles E. Winkler, RLS, dated January 12, 1999, and filed in the office of the Oneida County Register of Deeds. A complete history of the corner can be found on the previous monument record. I accept the previous location as a true and faithful perpetuation or reestablishment of the original corner location and further perpetuate it as follows.

November 12, 2018, I, Charles E. Winkler, P.L.S. No. S-1431, found and accepted NEPCO's capped iron pipe I recovered in 1999. The previous northwesterly tamarack bearing tree is now gone - see below for updated witnesses.

(c)(d)(e) PLAN VIEW OF CORNER WITH TIES TO AT LEAST 4 WITNESS MONUMENTS. IF IN DISAGREEMENT WITH PREVIOUSLY ESTABLISHED CORNER, SHOW THE DISTANCE BETWEEN THE TWO CORNERS AND ALSO INDICATE THE TIES TO THE DISPUTED CORNER.



(i) I, CHARLES E. WINKLER, PROFESSIONAL LAND SURVEYOR NO. S-1431, HEREBY CERTIFY THAT THE CORNER LOCATION ON THIS RECORD WAS DETERMINED BY ME OR UNDER MY DIRECTION AND CONTROL AND THAT THIS U.S. PUBLIC LAND SURVEY MONUMENT RECORD IS CORRECT AND COMPLETE TO THE BEST OF MY KNOWLEDGE AND BELIEF.



*Charles Winkler*  
SIGNATURE

11/13/18  
DATE

INDEX NO. N - 19  
3804140020