

U.S. PUBLIC LAND SURVEY MONUMENT RECORD

Note: This form is intended and designed to fulfill all requirements of the Wisconsin Administrative Code, Chapter A-E 7.08 U.S. Public Land Monument Record (3)(a)(b)(c)(d)(e)(f)(g)(h)(i). An additional sheet may be added if necessary to conform with said requirements.

(a) CORNER LOCATION:

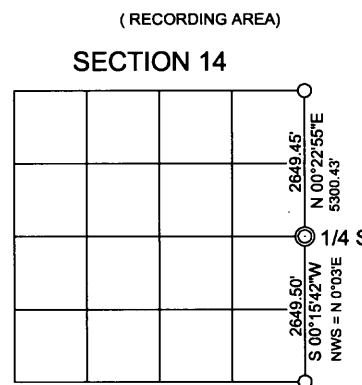
East 1/4 corner of Section 14
 Township 38 North
 Range 4 East
 Town of Minocqua
 County of Oneida

COORDINATES

North: 217672.100
 East: 128660.534
 Control Station: Oneida County #295
 Latitude: 45°46'27.13998"
 Longitude: 89°56'42.55785"
 Datum: NAD-83, '91
 Method: Direct RTK GPS

(b) HISTORY OF ORIGINAL CORNER ESTABLISHMENT

Original Surveyor: Alex Anderson
 Date of Survey: Commenced April 26th, 1865
 Completed May 8th, 1865
 Original B.T.'s: Y. Pine 12" S75°W, 9 links
 Y. Pine 12" N 4°E, 19 links



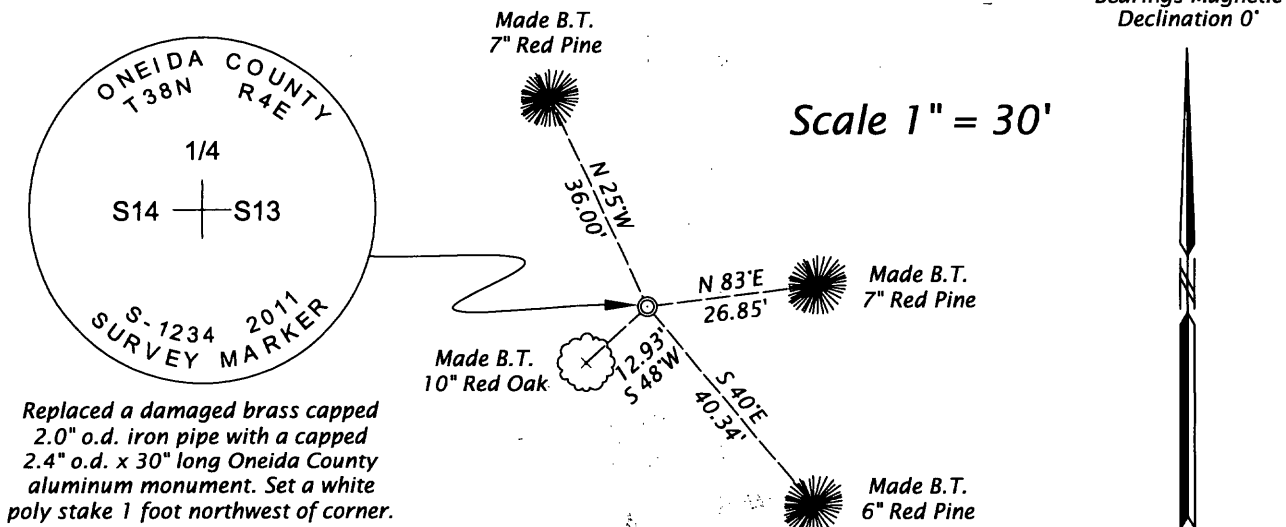
(f)(g)(h) DESCRIPTION OF MONUMENT FOUND AT THIS CORNER AND IF IT WAS ACCEPTED, STATE ALL EVIDENCE (MATERIAL, TESTIMONIAL, OCCUPATIONAL, PLATS, RECORDS, OTHER MONUMENTS) USED AS A BASIS FOR ESTABLISHING LOCATION. IF NOT ACCEPTED OF IF NOTHING WAS FOUND, STATE EVIDENCE USED AS BASIS FOR ESTABLISHING LOCATION. IF REESTABLISHED THROUGH LOST CORNER PROPORTIONATE METHODS, INDICATE ALL MONUMENTS, DISTANCES AND DIRECTIONS USED TO ESTABLISH. INDICATE TYPE OF MONUMENT AND SIGN POST FOUND OR SET.

December 2nd, 1937 and continuing through 7/9/40 ? - Ray H. Hall, Surveyor, Camp 75-S Minocqua CCC - Field Book 9, pages 20 through 28 and 60 search for evidence of original corners along west lines of Sections 12, 13 and 24. Unable to recover original corner evidence between the W 1/4 Corner of Section 12 and the W 1/4 Corner of Section 24. He re-established the SE Corner of Section 14 by double proportionate measurement and sets a temporary corner at the NE Corner of Section 14.

November, 1969 - John H. Fisher, RLS No. 836 - Field notes and accompanying work drawing in the archives of Foltz & Associates, in connection with section boundary control performed for survey map filed as C1569 in County Surveyor's Office, identifies this corner as "set" by single proportionate method while simultaneously positioning the northeast corner of Section 14, by double proportionate method. This work map shows a computed N0°03'E, 5300.43' dimension between section corners.

November 17, 2011 - James D. Rein, RLS No. 1234 - We recover a brass capped 2" o.d. x 48" long (top badly bent by logging equipment) iron pipe very near the theoretical record position between section corners. I accept the iron pipe as marking the re-established corner by single proportionate measurement and replace it with a capped 2.4" o.d. x 30" long flange bottom aluminum monument. We set a white poly stake 1 foot northwest of the corner monument and made reference ties to aluminum nails set in the center of the root crown on sides of four new scribed bearing trees as shown below in plan.

(c)(d)(e) PLAN VIEW OF CORNER WITH TIES TO AT LEAST 4 WITNESS MONUMENTS. IF IN DISAGREEMENT WITH PREVIOUSLY ESTABLISHED CORNER, SHOW THE DISTANCE BETWEEN THE TWO CORNERS AND ALSO INDICATE THE TIES TO THE DISPUTED CORNER.



(i) I, JAMES D. REIN, PROFESSIONAL LAND SURVEYOR NO. S-1234 HEREBY CERTIFY THAT THE CORNER LOCATION ON THIS RECORD WAS DETERMINED BY ME OR UNDER MY DIRECTION AND CONTROL AND THAT THIS U.S. PUBLIC LAND SURVEY MONUMENT RECORD IS CORRECT AND COMPLETE TO THE BEST OF MY KNOWLEDGE AND BELIEF.

[Handwritten Signature]

12-14-11
 DATE



INDEX NO. L 21