

U.S. PUBLIC LAND SURVEY MONUMENT RECORD

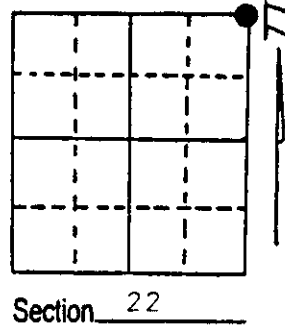
Note: This form is intended and designed to fulfill all requirements of Wisconsin Administrative Code, Chapter A-E 5.02, U.S. Public Land Survey Monument Record (3) (a) (b) (c) (d) (e) (f) (g) (h) (i). An additional sheet may be added if necessary to conform with said requirements.

(a) Corner location: Township 38 North

Range 4 East/West

Town/City/Village Minocqua

County Oneida

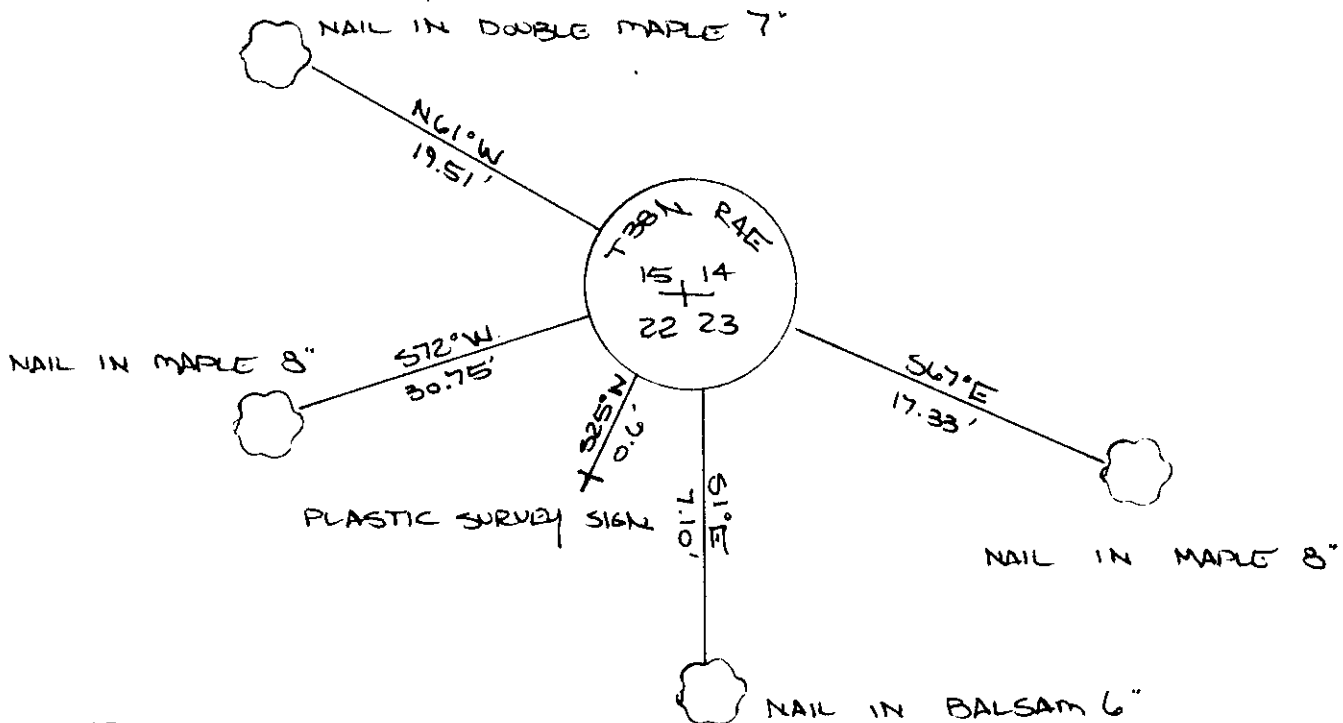


(b) (f) (g) (h) Description of monument found at this corner and if it was accepted, state all evidence (material, testimonial, occupational, plats, records, other monuments) used as a basis for accepting. If not accepted or if nothing was found, state evidence used as basis for establishing location. If reestablished through lost corner proportionate methods, indicate all monuments, distances and directions used to establish.

The Original Government Survey was performed by Alexander Anderson in April & May, 1865. A wood post was set: Hemlock 10' N10W, 14 lks.; Birch 12' S21E, 17 lks.
 Nekoosa Paper Co. used this corner in surveys they performed in the 1950s. Corner listed as iron pipe or cap (no BTs).
 Dave Mc Mullen used this corner in the preparation of Oneida County Map No. A-163 dated 2-4-83. Corner listed as iron pipe with brass cap.

I found and accepted: Iron pipe, 2" dia., 18" above ground with brass cap stamped as shown below. I established the following witnesses: Double Maple 7" N61W, 19.51'; Balsam 6" S1E, 7.10'; Maple 8" S72W, 30.75'; Maple 8" S67E, 17.33' (measurements to nail in tree); Plastic Survey Sign S25W, 0.6'.

(c) (d) (e) Plan view of corner with ties to at least 4 witness monuments. If in disagreement with previously established corner, show the distances between the two corners and also indicate the ties to the disputed corner.



(i) I, JEFFREY W. AUSTIN S-1885
 (type or print name) certify that the corner location on this record was determined by me or under my direction and control and that this U.S. Public Land Survey Monument Record is correct and complete to the best of my knowledge and belief.

Signature

Date

FEBRUARY 1, 1989



3804150000

Index No. N 17