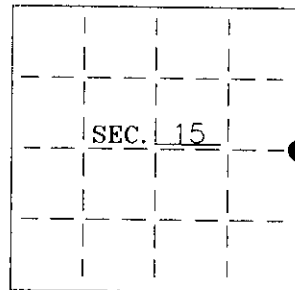


U. S. PUBLIC LAND SURVEY MONUMENT RECORD

Note: This form is intended and designed to fulfill all requirements of Wisconsin Administrative Code-Chapter A-E 7.08 U. S. Public Land Survey Monument Record (3)(a)(b)(c)(d)(e)(f)(g)(h)(i). An additional sheet may be added if necessary to conform with said requirements.

(a) CORNER LOCATION: State Plane Coordinates
E 1/4 corner of Sec. 15
 Township 38 North
 Range 4 East
 Town Minocqua
 County of Oneida



(b) HISTORY OF ORIGINAL CORNER ESTABLISHMENT: Original B.T.'S

Original Surveyor: Alex Anderson
 Date of Survey: Commenced 1865
 Completed 1865
 5" Cedar N33°W, 10 lks
 7" Cedar S1°W, 13 lks

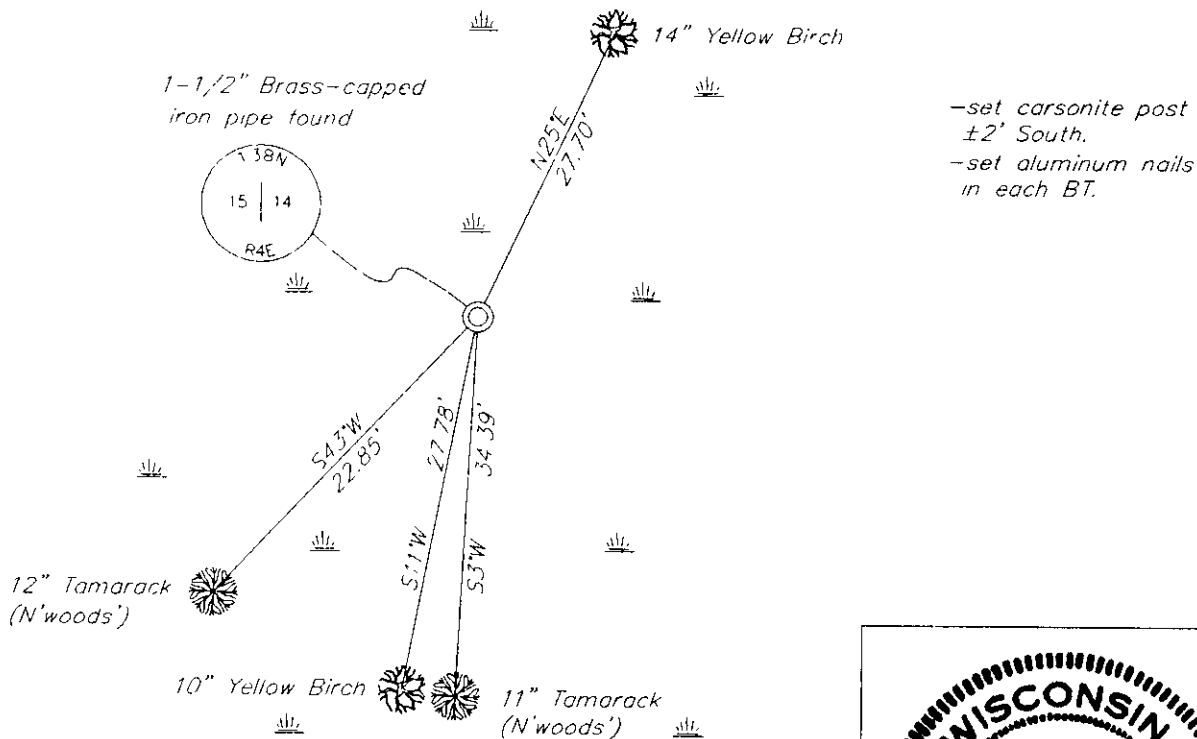
(b)(f)(g)(h) Description of monument found at this corner and if it was accepted—state all evidence (material—testimonial—occupation—plats—records—other monuments) used as a basis for accepting. If not accepted or if nothing was found state evidence used as basis for establishing location. If reestablished through lost corner proportionate methods indicate all monuments—distances and directions used to establish. Indicate type of monument and sign post found or set.

1961 - Northwoods Surveyors' field notes state they set a accp. pipe by single proportion and made two BT's at the E1/4 corner location, 5" Tamarack, S47°W, 22.7' and 5" Tam., S8°W, 33.9'.

1965 - On a drawing by W.H. Stuth(O-I), dated 8/18/86, he shows a corner by others at the E1/4 corner.

2001 - I found and accepted a 1-1/2" brass-capped iron pipe in an alder swamp and found Northwoods' BT's. I made two more BT's as shown below. I found no orig. evidence.

(c)(d)(e) Plan view of corner with ties to at least 4 witness monuments. If in disagreement with previously established corner—show the distances between the two corners and also indicate the ties to the disputed.



(i) I Charles E. Winkler S-1431
 hereby certify that the corner location on this record was determined by me or under my direction and control and that this U.S. Public Land Survey Monument Record is correct and complete to the best of my knowledge and belief.

Charles E. Winkler 3/5/2002
 Signature Foltz and Associates, Inc. Date



INDEX NO. L 17

3804152000