

U.S. PUBLIC LAND SURVEY MONUMENT RECORD

Note: This form is intended and designed to fulfill all requirements of Wisconsin Administrative Code, Chapter A-E 7.08 U.S. Public Land Survey Monument Record (3)(a)(b)(c)(d)(e)(f)(g)(h)(i). An additional sheet may be added if necessary to conform with said requirements.

(a) CORNER LOCATION: * on east line

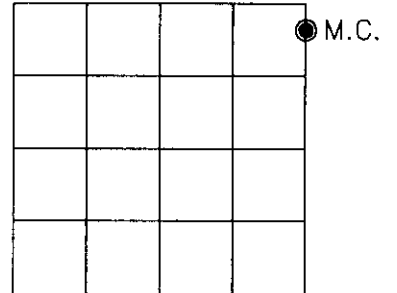
Meander corner* of Sec. 15
 Township 38 North
 Range 4 East
 Town/~~City/Village~~ Minocqua
 County of Oneida

State Plane Coordinates

X _____

Y _____

Datum Base _____



(b) HISTORY OF ORIGINAL CORNER ESTABLISHMENT

Original Surveyor: Alexander Anderson

Original B.T.'S

SECTION 15

Date of Survey: Commenced April 26, 1865

W. Pine 12" S16°W, 19 links

Completed May 8th, 1865

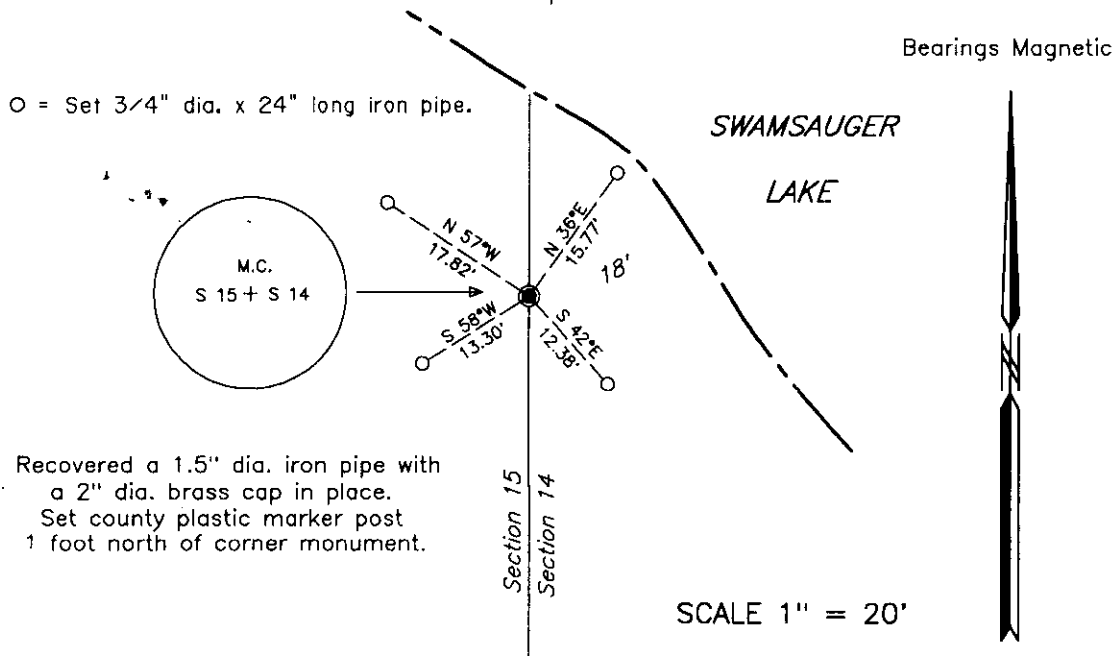
Fir 10" S22 1/2°W, 22 links

(f)(g)(h) Description of monument found at this corner and if it was accepted, state all evidence (material, testimonial, occupational, plats, records, other monuments) used as a basis for establishing location. If not accepted if nothing was found, state evidence used as basis for establishing location. If reestablished through lost corner proportionate methods, indicate all monuments, distances and directions used to establish. Indicate type of monument and sign post found or set.

1964 – William S. Cameron, RLS No. 112 – Recorded plat of SWAMSAUGER HEIGHTS, legends this meander corner as also being the corner common to Lots 4 and 5 in the plat, monumented by a 1.5 inch dia. iron pipe with a brass cap.

September 18, 2000 – James D. Rein, RLS No. 1234 – We recover a 1.5 inch dia. iron pipe with a 2 inch dia. cap extending 17 inches above ground level. I accept this monument as marking the corner and we set four 3/4 inch dia. x 24 inch long iron pipes for reference ties as shown in the plan view.

(c)(d)(e) Plan view of corner with ties to at least 4 witness monuments. If in disagreement with previously established corner, show the distance between the two corners and also indicate the ties to the disputed corner.



(i) I, James D. Rein, Registered Land Surveyor No. 1234, hereby certify that the corner location on this record was determined by me or under my direction and control and that this U.S. Public Land Survey Monument Record is correct and complete to the best of my knowledge and belief.

James D. Rein Signature
 October 17, 2000 Date



INDEX NO. J-K 17