

This form is intended to fulfill requirements of Chapter A-E 7.08 (3)(a) thru (i) U.S. Public Land Survey Monument Location Record, Wisconsin Administrative Code. Use reverse side for geodetic location data and/or other continuation purposes.

# U.S. PUBLIC LAND SURVEY MONUMENT LOCATION RECORD

Recorders Data

USPLS CORNER: NW SECTION CORNER SECTION 22 TOWNSHIP: 38 NORTH RANGE: 4 EAST

NAME OF WATERWAY FOR M.C. CORNER : N/A SECTION LINE: N/A

(CITY)(VILLAGE)(TOWN) OF: MINOCQUA COUNTY OF: ONEIDA

Description of monument found or placed and all other evidence used as the basis for monument location; including monuments and related measurements required if the corner location was reestablished by lost corner proportionate methods. Also indicate name of original surveyor, original survey date and the corner monument, bearing trees, witness or other reference monuments established; including measured bearing and distance ties, from available records.

Found and accepted an old squared wood post at this corner location. Post was found tipped to the SE due to root growth at surface of ground. I carefully plumbed and removed the post which pulled apart from decay at the ground surface, and reset a standard 2" dia. by 30" long aluminum pipe monument with stamped Oneida County cap 4" above grade of small rooted ground depression in soil cavity left by old wood post point.

No other section corner monumentation evidence was detected nor observed within 1 chain of the corner location. I also found an old decayed 8" Aspen 8' high stub NE 10 feet with a standard Nepco aluminum location tag nailed to SW face 6' high, and an old squared wood corner marker post with a similar location tag near top lying flat on west roadway berm East of the corner.

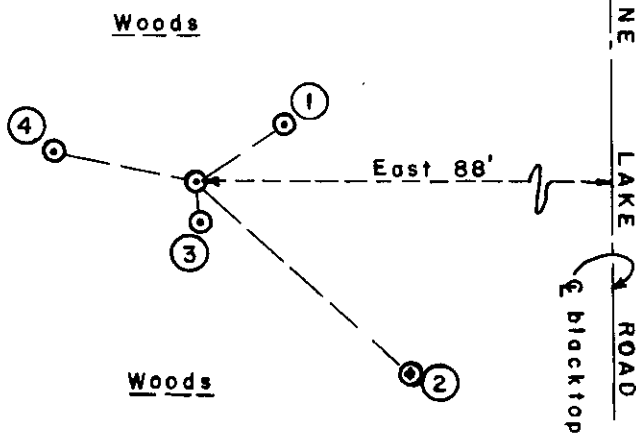
In April 1865, Alexander Anderson/GLO set a wood post as the original corner, and marked OBTs: a 14" Cedar N41°E 10 links and a 12" Cedar N08°E 20 links, all of which are now obliterated.

This corner recovery is based solely upon information provided upon section data sheets filed by W. Stuth in Oneida County records for Section 15 dated 1987 and Section 16 dated 1989.

This recovery was completed April 9, 1999; there were no witnesses other than vehicle drive-bys on Pine Lake Road East of the corner.

I left the remains of old wood marker post found at this corner flat on grade next to the new corner monument set, and I propped the old marker post found on the West edge of Pine Lake road against a 16" Pr nearby.

Plan view map of monument location with bearing and distance ties to a minimum of four(4) described witness or reference monuments of concrete, natural stone, iron, live bearing trees or equivalent material. If applicable, also show a minimum of two(2) bearing and distance ties to any other monument found and not accepted; including the bearing and distance from the accepted monument.



### WITNESS MONUMENT TIES:

- ① New BT, SE trunk of a clump of four(4) Mr N56°E 16.33'.
- ② New BT, 20" Pr S48°E 44.98'.
- ③ New BT, 16" Fir S05°E 5.85'.
- ④ New BT 12" PJ N78°W 22.75'.

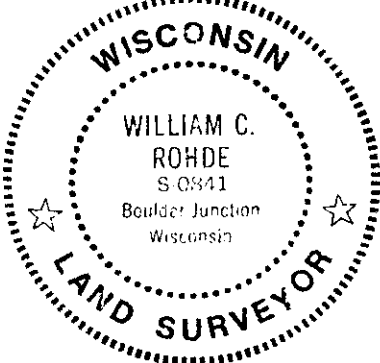
I set a standard white poly 'T' corner marker post 8" West of the corner monument reset.

Corner is located about 88 feet West of the centerline of blacktop mat for Pine Lake Road running North/South in Section 15.

SCALE: 1" = 30'

Unless otherwise indicated, all bearing tree ties are to a .25" dia. by 2.5" long PK nail with a 1.25" dia. steel washer driven into unblazed right face and a .25" dia. by 2.5" long PK nail is also driven into unblazed face of bearing tree at DBH; the basis for measured bearings is by magnetic compass to nearest degree and all tie distances are measured horizontal by steel tape corrected to nearest 1/100th feet at standard temperature of 68 degrees Fahrenheit.

RLS SEAL:



LAND SURVEYOR CERTIFICATE:

I, William C. Rohde, hereby certify that I am duly licensed as a Professional Land Surveyor in the State of Wisconsin; that this USPLS monument location was determined by me and/or under my direct supervision and control; and that this U.S. Public Land Survey Monument Location Record is true and correct to the best of my knowledge and belief.

Signed: *William C. Rohde*  
William C. Rohde RLS 841

		22	

SHEET 1 OF 1  
FORM REVISED: 03/12/99

Date Signed: April 12, 1999

SECTION LOCATION MAP  
INDEX NO. N 13

SEE CORNER SHEET DATED 8/25/00 FOR ANOTHER LOCATION FOR THIS CORNER 3804160000

This form is intended to fulfill the requirements of Chapter A-E 7.08 (3)(a) thru (i) U.S. Public Land Survey Monument Location Record, Wisconsin Administrative Code. Use the reverse side of form for continuation.

**U.S. PUBLIC LAND SURVEY MONUMENT LOCATION RECORD**

Recorders Data

USPLS CORNER: NW SECTION SECTION: 22 TOWNSHIP: 38 NORTH RANGE: 04 EAST

NAME OF WATERWAY FOR M.C. CORNER : N/A SECTION LINE: N/A

(CITY)(VILLAGE)(TOWN) OF: MINOCQUA COUNTY OF: ONEIDA

Description of monument found or placed and all other evidence used as the basis for monument location; including monuments and related measurements required if the corner location was reestablished by lost corner proportionate methods. Also indicate name of original surveyor, original survey date and the corner monument, bearing trees, witness or other reference monuments established; including measured bearing and distance ties, from available records.

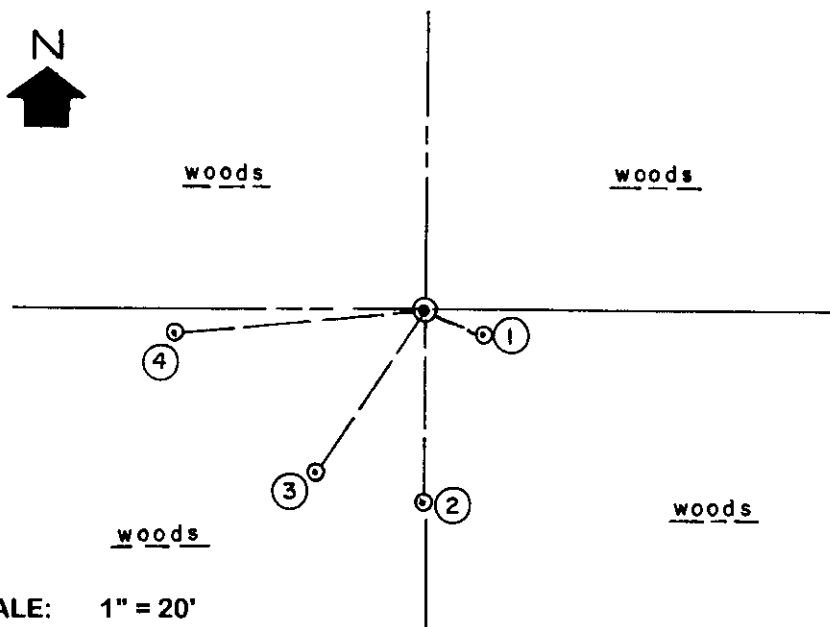
This corner recovered and referenced at the verbal request and approval of Oneida County Surveyor Michael Romportl in his office on May 10, 2000, as in April 1999 I had previously recovered and referenced another record location for the very same section corner approximately 4 chains to the North as established by Nekoosa Papers survey in the 1950's; this is essential in order to clarify filed Oneida County USPLS Land Survey Monument Location Records for future referral purposes.

No original GLO survey evidence was searched for as this corner was established by proportionate measure in 1983 per Owens-Illinois Section 15 T38N R4E section control map prepared by William H. Stuth/RLS 1418 and filed in Oneida County survey records.

At this corner location, I found an old undisturbed 1.25" dia. iron pipe monument with uncapped top 8" above grade and an old 5" dia. squared top wood marker post, with no visible markings, about 9" NW to post center. The monument is located about 98' West of the centerline of blacktop roadway mat running North/South and named Pine Lake Road. I left the iron pipe in place and drove a standard 2" dia. by 30" long aluminum pipe monument with stamped Oneida County cap 12" above grade. I then compassed East from this monument to the West edge of the latter blacktop roadway and then measured North along the pavement edge a distance of 262' to a point compassed East from the section corner location I had previously recovered in April 1999, so as to further distinguish the locational separation in the field.

This recovery completed June 17, 2000; there were no direct witnesses.

Plan view map of monument location with bearing and distance ties to a minimum of four(4) described witness or reference monuments of concrete, natural stone, iron, live bearing trees or equivalent material. If applicable, also show a minimum of two(2) bearing and distance ties to any other monument found and not accepted; including the bearing and distance from the accepted monument.



**WITNESS MONUMENT TIES:**

- ① Old BT 10" Sb S70°E 6.59' with an old 5" sq. aluminum marker tag by Nepco nailed to upper face.
- ② New BT 9" Sb South 20.20'.
- ③ New BT 12" Pr S33°W 20.29'.
- ④ New BT 10" Sb S85°W 26.30'.

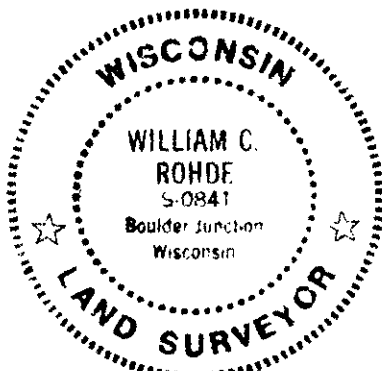
I set a standard white poly 'T' marker post 8" East of the corner monument.

I also stamped Oneida County cap '1983 Set - By Prop' to further clarify.

SCALE: 1" = 20'

Unless otherwise indicated, all bearing tree ties are to a .25" dia. by 2.5" long PK nail with a 1.25" dia. steel washer driven into unblazed right face and a .25" dia. by 2.5" long PK nail with a 2" dia. steel washer stamped BT is also driven into unblazed face of bearing tree at DBH; the basis for measured bearings is by compass to nearest degree and all tie distances are measured horizontal by steel tape corrected to nearest 1/100th feet at standard temperature of 68° F.

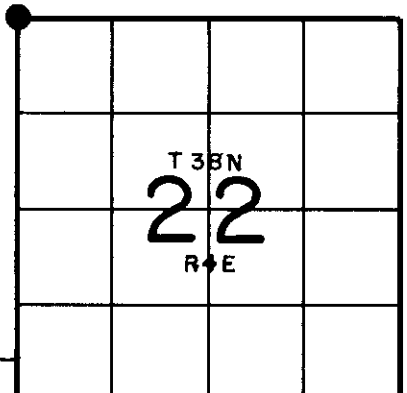
RLS SEAL:



**LAND SURVEYOR CERTIFICATE:**

I, William C. Rohde, hereby certify that I am duly licensed as a Professional Land Surveyor in the State of Wisconsin; that this USPLS monument location was determined by me and/or under my direct supervision and control; and that this U.S. Public Land Survey Monument Location Record is true and correct to the best of my knowledge and belief.

Signed *William C. Rohde*  
William C. Rohde RLS 841



SECTION LOCATION MAP

INDEX NO. N 13

3804160000

SHEET 1 OF 1  
FORM REVISED: 06/01/99

Date Signed: August 25, 2000

SEE CORNER SHEET DATED 4/12/79 FOR ANOTHER LOCATION FOR THIS CORNER