

U.S. PUBLIC LAND SURVEY MONUMENT RECORD

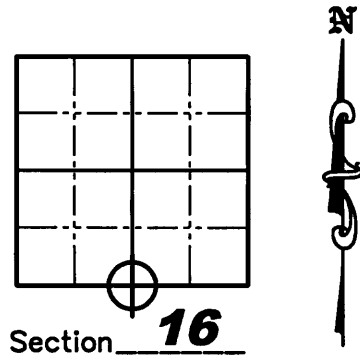
NOTE: This form is intended and designed to fulfill all requirements of Wisconsin Administrative Code, Chapter A-E 7 .08 U.S. Public Land Survey Monument Record (3)(a)(b)(c)(d)(e)(f)(g)(h)(i). An additional sheet may be added if necessary to conform with said requirements.

(a) Corner location: Township 38 North

Range 4 East

Town of Minocqua

County of Oneida



Section 16

(b)(f)(g)(h) Description of monument found at this corner and if it was accepted, state all evidence (material, testimonial, occupation, plats, records, other monuments) used as a basis for accepting. If not accepted or if nothing was found, state evidence used as a basis for establishing location. If reestablished through lost corner proportionate methods, indicate all monuments, distances and directions used to establish. Indicate type of monument found or set and sign post.

April-May 1865 - Alex Anderson set original 1/4 post, BT's: 10" Hemlock, S66°W, 26 links; 10" Hemlock, N08°E, 6 links.

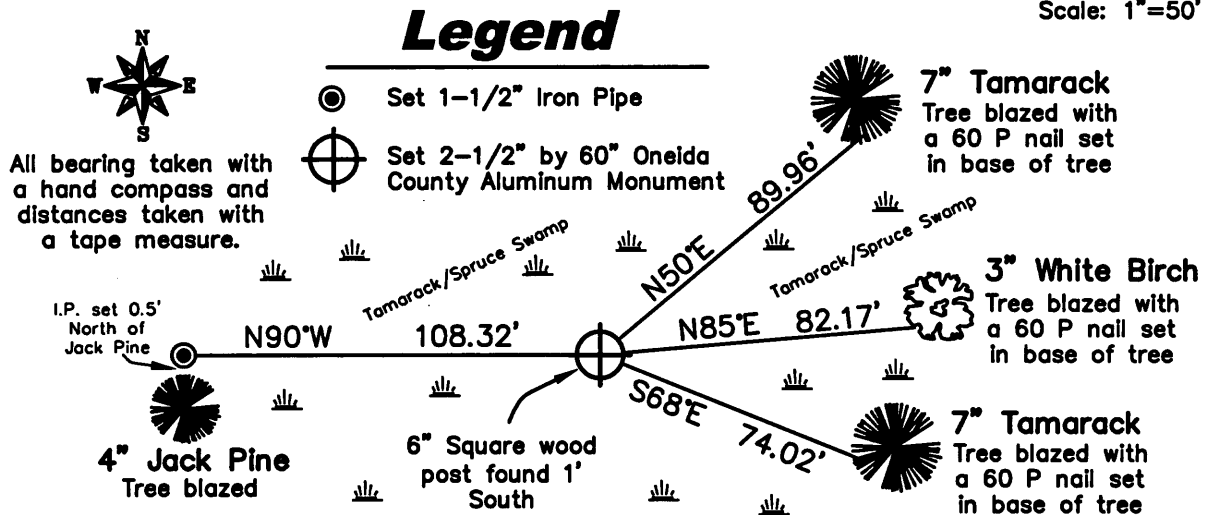
June 18, 1985 - Nekoosa Papers, Inc. set a 1-1/4" iron pipe with a cedar post and location tag at corner location - (per NEPCO Book 2 on pages 21-22.)

May, 2008 - Jeffrey W. Austin found a 1-1/2" iron pipe and observed corner with GPS. (Oneida County Coordinates: N 214769.614, E 115458.194)

August 6, 2008 - Jonathan W. Dulin found and accepted an 1-1/2" iron pipe with a 6" square wood post with location tag, 1' South of iron pipe. We replaced the corner with a 2-1/2" by 60" Oneida County aluminum monument and witnessed the corner as shown below.

(c)(d)(e) Plan view of corner with ties to at least 4 witness monuments. If in disagreement with previously established corner, show the distances between the two corners and also indicate the ties to the disputed corner.

Scale: 1"=50'



(i) I, Jonathan W. Dulin, certify that the corner location on this record was determined by me under my direction and control and that this U.S. Public Land Survey Monument is correct and complete to the best of my knowledge and belief.

8-7-2008
 Signature Date

REGISTER OF DEEDS OFFICE
ONEIDA COUNTY, WIS.

FILED

AUG 12 2008

At _____ O'Clock _____ M
THOMAS H. LEIGHTON
REGISTER OF DEEDS

3804160020

Index No. N-11