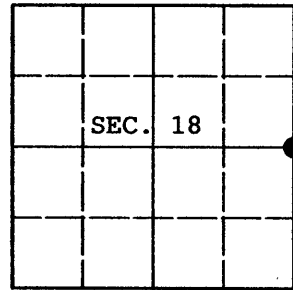


**U.S. PUBLIC LAND SURVEY MONUMENT RECORD**

Note: This form is intended and designed to fulfill all requirements of Wisconsin Administrative Code, Chapter A-E 7.08 U.S. Public Land Survey Monument Record (3) (a) (b) (c) (d) (e) (f) (g) (h) (i). An additional sheet may be added if necessary to conform with said requirements.

(a) CORNER LOCATION: Plane Coordinates  
 1/4 Cor. of Secs. 17 & 18 X:  
 Township 38 North Y:  
 Range 4 East of the 4th P.M. Datum:  
 Town of Minocqua County of Oneida



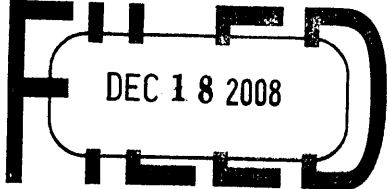
(b) HISTORY OF ORIGINAL CORNER ESTABLISHMENT

Original Surveyor: Alexander Anderson Original Accessories:  
 Date of Survey: Commenced April 26, 1865 Fir 10" N.44°E., 12 lks.  
 Completed May 8, 1865 Fir 8" N.37°E., 18 lks.

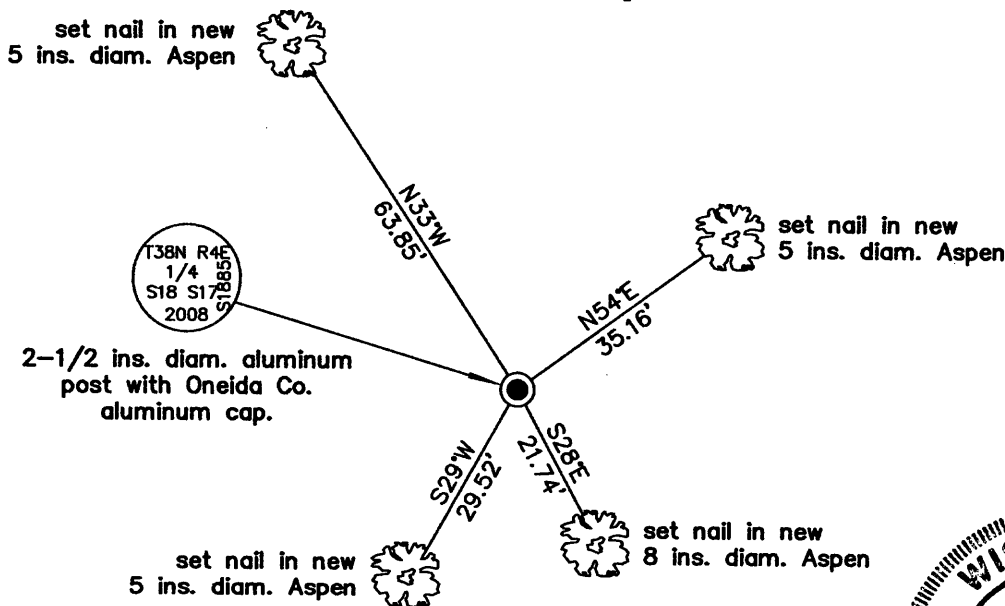
(b) (f) (g) (h) Description of monument found at this corner and if it was accepted, state all evidence (material, testimonial, occupational, plats, records, other monuments) used as a basis for accepting. If not accepted or if nothing was found, state evidence used as basis for establishing location. If re-established through lost corner proportionate methods, indicate all monuments, distances and directions used to establish. Indicate type of monument and sign post found or set.

April 9, 1979: Map by William Stuth, RLS indicates corner is marked by an "iron pipe or cap" and witnessed by: 8" balsam N32°E, 17.0' and 8" balsam S78°W, 12.0'

May 28, 2008: I found and accepted Stuth's monument, an iron pipe, 2 ins. diam. with old wood post nearby. Stuth's trees are both stumps. Over the pipe, I set an aluminum post, 30 ins. long, 2-1/2 ins. diam. with Oneida Co. aluminum cap projecting 7 ins. above the ground surface. I established accessories as shown below and set a white plastic sign post bearing Northwest, 1 ft. dist.

REGISTER OF DEEDS OFFICE  
 ONEIDA COUNTY, WIS.  
  
 At \_\_\_\_\_ O'Clock \_\_\_\_\_ M  
**THOMAS H. LEIGHTON**  
 REGISTER OF DEEDS

(c) (d) (e) Plan view of corner with ties to at least 4 witness monuments. If in disagreement with previously established corner, show the distances between the two corners and also indicate the ties to the disputed.



(i) I, Jeffrey W. Austin, Registered Land Surveyor No. S-1885, hereby certify upon honor that the corner location on this record was determined by me or under my direction and control and that this U.S. Public Land Survey Monument Record is correct and complete to the best of my knowledge and belief.

Signature \_\_\_\_\_ Date DEC 12, 2008



INDEX NO. I-5 (3804182000)