

U.S. PUBLIC LAND SURVEY MONUMENT RECORD

APR 17 2017

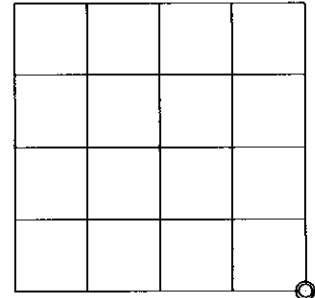
Note: This form is intended and designed to fulfill all requirements of the Wisconsin Administrative Code, Chapter A-E 7.08 U.S. Public Land Monument Record (3)(a)(b)(c)(d)(e)(f)(g)(h)(i). An additional sheet may be added if necessary to conform with said requirements.

AT _____ O'CLOCK _____ M
KYLE J. FRANSON
REGISTER OF DEEDS

(a) CORNER LOCATION: WISCRS - Oneida County
Southeast Corner of Section 19
Township 38 North
Range 4 East
Town of Minocqua
County of Oneida
North: 209472.549 USft
East: 107536.582 USft
Latitude: 45°45'34.30723" N
Longitude: 90°01'27.14118" W
Datum: NAD 83(2011)
GNSS Method: RTK - Direct
GNSS Control: WISCRS VRS
Record North: 209472.757 USft
Record East: 107536.541 USft
Record Datum: NAD 83(1991)

(RECORDING AREA)

SECTION 19



(b) HISTORY OF ORIGINAL CORNER ESTABLISHMENT

Original Surveyor: Alexander Anderson
Date of Survey: Commenced April 26th, 1865
Completed May 8th, 1865
Original B.T.'S: Spruce 6" N 4°E 12 lks.
Birch 12" S 55°E 41 lks.

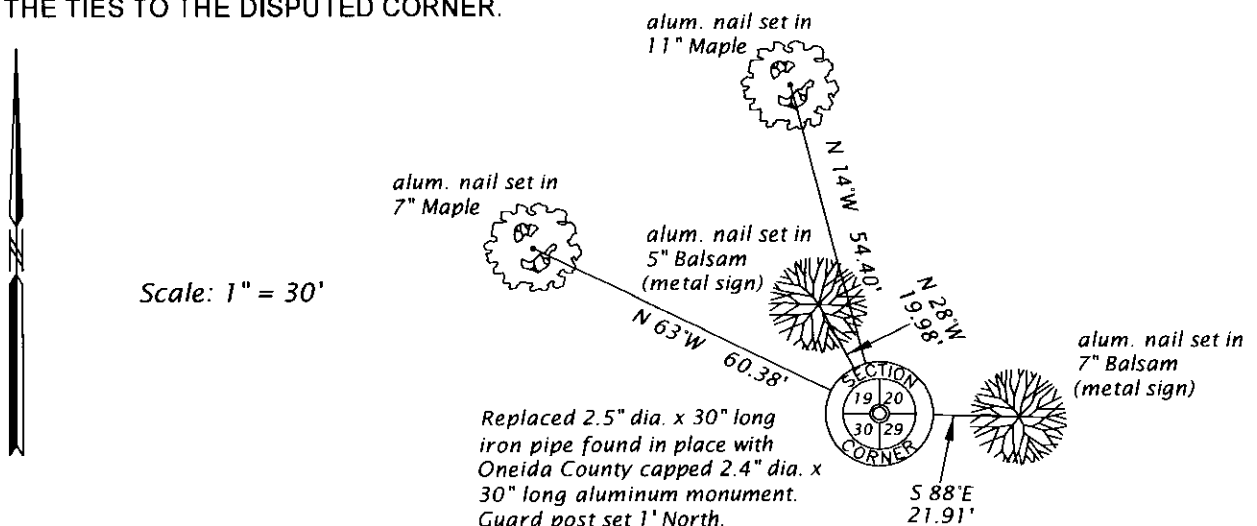
(f)(g)(h) DESCRIPTION OF MONUMENT FOUND AT THIS CORNER AND IF IT WAS ACCEPTED, STATE ALL EVIDENCE (MATERIAL, TESTIMONIAL, OCCUPATIONAL, PLATS, RECORDS, OTHER MONUMENTS) USED AS A BASIS FOR ESTABLISHING LOCATION. IF NOT ACCEPTED OR IF NOTHING WAS FOUND, STATE EVIDENCE USED AS BASIS FOR ESTABLISHING LOCATION. IF REESTABLISHED THROUGH LOST CORNER PROPORTIONATE METHODS, INDICATE ALL MONUMENTS, DISTANCES AND DIRECTIONS USED TO ESTABLISH. INDICATE TYPE OF MONUMENT AND SIGN POST FOUND OR SET.

1961 - Nekoosa Papers, Inc. map (NEPCO Book 2, page 29) map of survey in Section 19, T38N, R4E, describes that an approximate corner set by staff compass survey in 1958, was replaced with a proportioned corner by the 1961 survey.

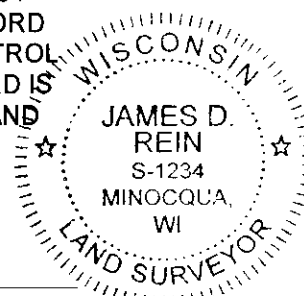
March 21, 2017 - James D. Rein, Professional Surveyor No. 1234, recovered a 2.5" o.d. iron pipe, which I accept as being a good faith reestablishment of the lost corner, by proportionate measurement, because it's position is harmonious with both the Oneida County published GPS corner and our previously GPS observed corner positions as shown on that Owens-Illinois map, for a survey in Section 29, T38N, R4E, filed as NEPCO Book 2, page 43 in the county records. We replace the iron pipe with a capped 2.4" dia. x 30" long aluminum monument and make reference ties as shown in plan view.

The coordinate value shown has been verified by at least one of the following methods: 1) comparison to a previously GPS determined published value; 2) the value is the average of two or more GPS observations at a markedly different time; 3) one or more distances were measured back to the GPS observed corner from temporary GPS observed offset locations.

(c)(d)(e) PLAN VIEW OF CORNER WITH TIES TO AT LEAST 4 WITNESS MONUMENTS. IF IN DISAGREEMENT WITH PREVIOUSLY ESTABLISHED CORNER, SHOW THE DISTANCE BETWEEN THE TWO CORNERS AND ALSO INDICATE THE TIES TO THE DISPUTED CORNER.



(i) I, JAMES D. REIN, PROFESSIONAL LAND SURVEYOR NO. S-1234 HEREBY CERTIFY THAT THE CORNER LOCATION ON THIS RECORD WAS DETERMINED BY ME OR UNDER MY DIRECTION AND CONTROL AND THAT THIS U.S. PUBLIC LAND SURVEY MONUMENT RECORD IS CORRECT AND COMPLETE TO THE BEST OF MY KNOWLEDGE AND BELIEF.



[Handwritten Signature]

4-10-17
DATE

INDEX NO. R - 5
3804190000

SIGNATURE