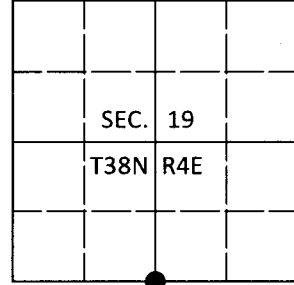


U.S. PUBLIC LAND SURVEY MONUMENT RECORD

Note: This form is intended and designed to fulfill all requirements of Wisconsin Administrative Code, Chapter A-E 7.08 U.S. Public Land Survey Monument Record (3)(a-i).

(a) CORNER LOCATION
 1/4 Cor. of Secs. 19 & 30
 Township 38 North
 Range 4 East of the 4th P.M.
 Town of Minocqua
 County of Oneida

WISCORS - Oneida County
 N: 209,544.11 USft
 E: 104,924.12 USft
 Datum: NAD 83(2011)
 GNSS Method: RTN - Direct
 GNSS Control: WISCORS VRS



(b) HISTORY OF ORIGINAL CORNER ESTABLISHMENT

Original Surveyor: Alexander Anderson

Original Accessories:

Date of Survey Commenced: Apr. 26, 1865
 Completed: May 8, 1865

Cedar 10" N49°W, 22 lks.
 Hemlock 10" S12°W, 16 lks.

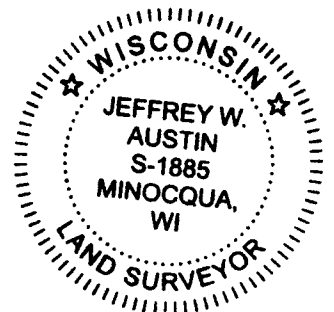
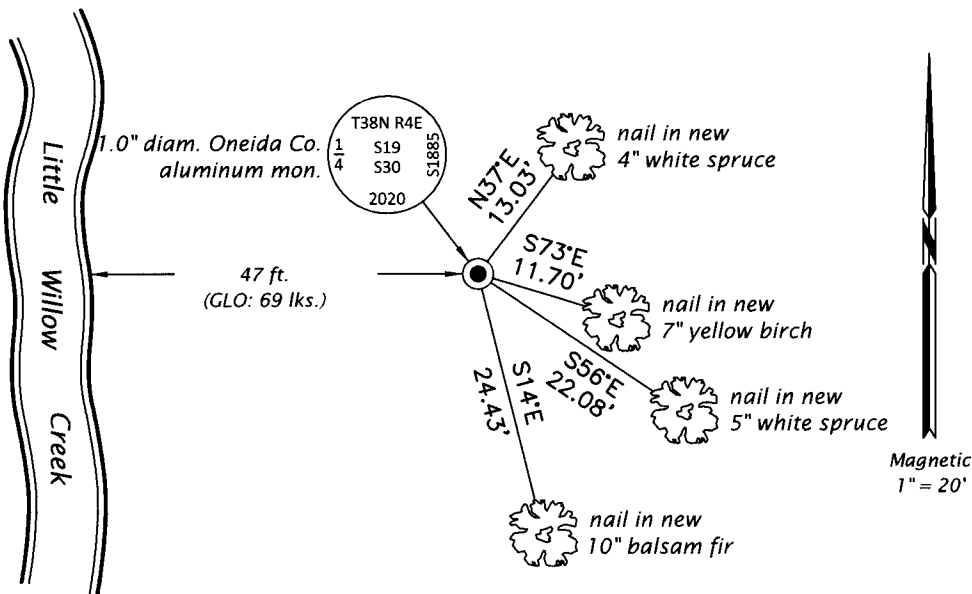
(b)(f)(g)(h) Description of monument found at this corner and if it was accepted, state all evidence (material, testimonial, occupational, plats, records, other monuments) used as a basis for accepting. If not accepted or if nothing was found, state evidence used as basis for establishing location. If re-established through lost corner proportionate methods, indicate all monuments, distances and directions used to establish. Indicate type of monument and sign post found or set.

Dec. 22, 1936: On page 22 of CCC book 7, Harry Hall notes the following: "Locate orig. 1/4 S between 19 & 30 38-4 by record dist. from stp. of hemlock - upper part with facing lying loose & from apparent spot cedar stood in when alive. Allowed for creep, cut off & righted it. Set co. mon. 1.2" exp. & cedar post alongside. Creek brs. W. .70; steep hill E. .15; new cedar 9" S8.5°W, .773; cedar 9" dead S71°W, .209; orig. hem. S32°W; orig. cedar N46°W."

May 6, 2020: I found and accepted the record monument, a 2.5" diam., 54" long badly rusted iron pipe with plumbing cap 30" above the ground. I found the GLO cedar down with no marks remaining. I found Hall's cedar snag 15" S8°W, 51.0 ft. and his cedar (down) S71°W, 13.8 ft. In place of the rusted monument, I set a 1.0" diam., 30" long aluminum pipe with a 2.5" diam. Oneida Co. aluminum cap flush in a collar of stone. I found or established accessories as shown below. I set a white vinyl sign post bearing North, 1.2 ft.

The coordinate value shown has been verified by at least one of the following methods: 1) comparison to a previously GPS determined published value; 2) the value is the average of two or more GPS observations at a markedly different time; 3) one or more distances were measured back to the GPS observed corner from temporary GPS observed offset locations.

(c)(d)(e) Plan view of corner with ties to at least 4 witness monuments. If in disagreement with previously established corner, show the distances between the two corners and also indicate the ties to the disputed.



REGISTER OF DEEDS OFFICE
 ONEIDA COUNTY
 FILED

JUN 26 2020

KYLE J. FRANSON
 REGISTER OF DEEDS

(i) I, Jeffrey W. Austin, Professional Land Surveyor No. S-1885, hereby certify that the corner location on this record was determined by me or under my direction and control and that this U.S. Public Land Survey Monument Record is correct and complete to the best of my knowledge and belief.

[Handwritten Signature]
 Signature

JUNE 5, 2020
 Date