

APR 17 2017

AT O'CLOCK M  
KYLE J. FRANSON  
REGISTER OF DEEDS

# U.S. PUBLIC LAND SURVEY MONUMENT RECORD

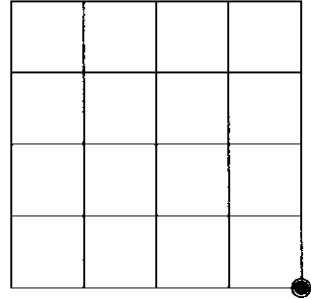
Note: This form is intended and designed to fulfill all requirements of the Wisconsin Administrative Code, Chapter A-E 7.08 U.S. Public Land Monument Record (3)(a)(b)(c)(d)(e)(f)(g)(h)(i). An additional sheet may be added if necessary to conform with said requirements.

(a) CORNER LOCATION:  
Southeast Corner of Section 20  
Township 38 North  
Range 4 East  
Town of Minocqua  
County of Oneida

WISCRS - Oneida County  
North: 209486.285 USft  
East: 112797.981 USft  
Latitude: 45°45'34.74753" N  
Longitude: 90°00'12.94066" W  
Datum: NAD 83(2011)  
GNSS Method: RTK - Direct  
GNSS Control: WISCORS VRS  
Record North: 209486.346 USft  
Record East: 112797.882 USft  
Record Datum: NAD 83(1991)

(RECORDING AREA)

SECTION 20



(b) HISTORY OF ORIGINAL CORNER ESTABLISHMENT

Original Surveyor: Alexander Anderson  
Date of Survey: Commenced April 26th, 1865  
Completed May 8th, 1865  
Original B.T.'S: Hemlock 6" N 72°W 10 lks.  
Hemlock 8" N 73°E 7 lks.

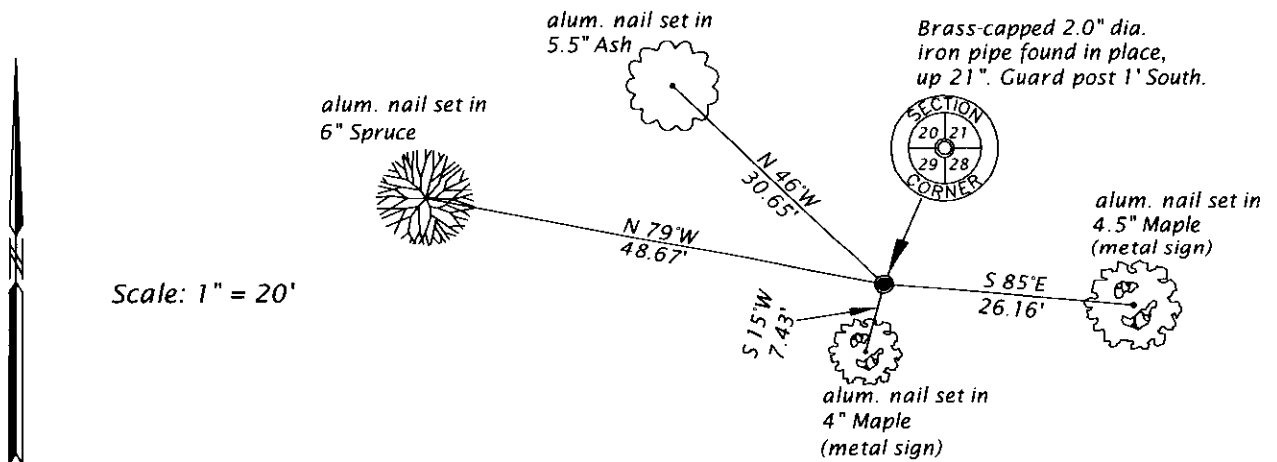
(f)(g)(h) DESCRIPTION OF MONUMENT FOUND AT THIS CORNER AND IF IT WAS ACCEPTED, STATE ALL EVIDENCE (MATERIAL, TESTIMONIAL, OCCUPATIONAL, PLATS, RECORDS, OTHER MONUMENTS) USED AS A BASIS FOR ESTABLISHING LOCATION. IF NOT ACCEPTED OR IF NOTHING WAS FOUND, STATE EVIDENCE USED AS BASIS FOR ESTABLISHING LOCATION. IF REESTABLISHED THROUGH LOST CORNER PROPORTIONATE METHODS, INDICATE ALL MONUMENTS, DISTANCES AND DIRECTIONS USED TO ESTABLISH. INDICATE TYPE OF MONUMENT AND SIGN POST FOUND OR SET.

December 8, 1961 - Nekoosa Paper Company (NEPCO Book 2, page 41) map by Wm. H. Stuth, for a survey in Section 28, T38N, R4E, legends corner monumented by an iron pipe - brass cap, referenced by bt's: 6" Maple N82°W, 44.5 feet; 6" Maple N32°W, 29.9 feet.

March 21, 2017 - James D. Rein, Professional Land Surveyor No. 1234, recovered brass-capped 2.0" o.d. iron pipe. Because this iron pipe has been relied upon, by prior surveys, as marking the corner, and its position is harmonious with the other controlling corners in adjacent sections, I also accept it by common report and make reference ties as shown in plan view.

The coordinate value shown has been verified by at least one of the following methods: 1) comparison to a previously GPS determined published value; 2) the value is the average of two or more GPS observations at a markedly different time; 3) one or more distances were measured back to the GPS observed corner from temporary GPS observed offset locations.

(c)(d)(e) PLAN VIEW OF CORNER WITH TIES TO AT LEAST 4 WITNESS MONUMENTS. IF IN DISAGREEMENT WITH PREVIOUSLY ESTABLISHED CORNER, SHOW THE DISTANCE BETWEEN THE TWO CORNERS AND ALSO INDICATE THE TIES TO THE DISPUTED CORNER.



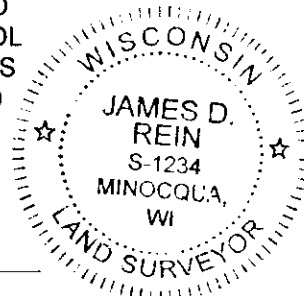
(i) I, JAMES D. REIN, PROFESSIONAL LAND SURVEYOR NO. S-1234 HEREBY CERTIFY THAT THE CORNER LOCATION ON THIS RECORD WAS DETERMINED BY ME OR UNDER MY DIRECTION AND CONTROL AND THAT THIS U.S. PUBLIC LAND SURVEY MONUMENT RECORD IS CORRECT AND COMPLETE TO THE BEST OF MY KNOWLEDGE AND BELIEF.

*[Handwritten Signature]*

4-10-17

SIGNATURE

DATE



INDEX NO. R - 9

3804200000