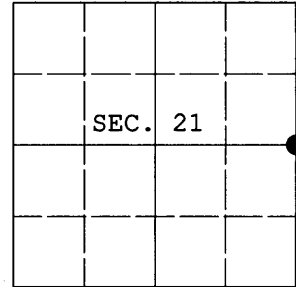


U.S. PUBLIC LAND SURVEY MONUMENT RECORD

Note: This form is intended and designed to fulfill all requirements of Wisconsin Administrative Code, Chapter A-E 7.08 U.S. Public Land Survey Monument Record (3) (a) (b) (c) (d) (e) (f) (g) (h) (i). An additional sheet may be added if necessary to conform with said requirements.

(a) CORNER LOCATION: Plane Coordinates
 1/4 Cor. of Secs. 21 & 22 N: 212,198.823 USft
 Township 38 North E: 118,114.235 USft
 Range 4 East Datum: NAD 83/91 (ONEIDA91)
 Town of Minocqua County of Oneida



(b) HISTORY OF ORIGINAL CORNER ESTABLISHMENT

Original Surveyor: Alexander Anderson Original Accessories:
 Date of Survey: Commenced April 26, 1865 cedar 10" N41°E, 19 lks.
 Completed May 8, 1865 w. pine 10" S42°W, 7 lks.

(b) (f) (g) (h) Description of monument found at this corner and if it was accepted, state all evidence (material, testimonial, occupational, plats, records, other monuments) used as a basis for accepting. If not accepted or if nothing was found, state evidence used as basis for establishing location. If re-established through lost corner proportionate methods, indicate all monuments, distances and directions used to establish. Indicate type of monument and sign post found or set.

January 3, 1934: In CCC book 2 on page 118, Hall indicates he found Dorr's RR iron for 1/4 cor. with no bearing trees.

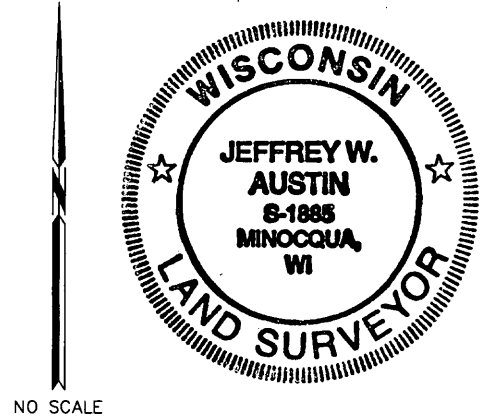
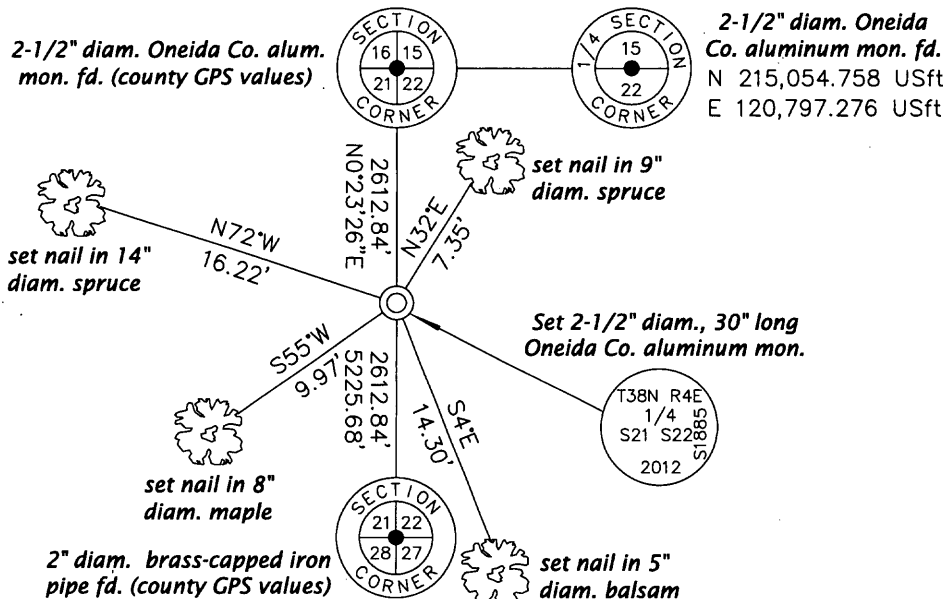
June 20, 1934: In CCC book 3 on page 65, Hall notes that he is "At RR iron alleged to be original 1/4 S between 21 + 22. Fail to find any supporting evidence, may have been moved."

March 31, 2012: At the proportionate location, I searched without success for the railroad iron mentioned by Hall. The proportionate location is only 32 ft. West of the town road centerline, so the iron may have been removed as a result. Based on the tone of Hall's notes, the fact he failed to tie the iron to his road traverse, and the fact he chose not to cut new bearing trees, it is my opinion that he intended to discount the location of the railroad iron. With this in mind, at the proportionate location I set a 2-1/2" diam., 30" long aluminum pipe with 3-1/4" diam. Oneida Co. aluminum cap projecting 6" above the ground surface and marked as shown below. I established accessories as shown below and set a white plastic sign post West, 1 foot.

The coordinates shown were derived from a static GPS control survey based on the published geographic coordinates of Oneida County control stations 294S and 295S.

(c) (d) (e) Plan view of corner with ties to at least 4 witness monuments. If in disagreement with previously established corner, show the distances between the two corners and also indicate the ties to the disputed.

ONEIDA CO. GRID



REGISTER OF DEEDS OFFICE
 ONEIDA COUNTY
FILED

MAY 07 2012

AT _____ O'CLOCK _____ M
THOMAS H. LEIGHTON
 REGISTER OF DEEDS

(i) I, Jeffrey W. Austin, Registered Land Surveyor No. S-1885, hereby certify that the corner location on this record was determined by me or under my direction and control and that this U.S. Public Land Survey Monument Record is correct and complete to the best of my knowledge and belief.

Signature _____ Date May 1, 2012